

Latitude

Longitude

2.015
MFE

Topo Location

7.5' Loc. _____ 15' Loc. _____
_____ (calc.) _____

Company Silver Hill Oil Co

Farm CS Headley # 2

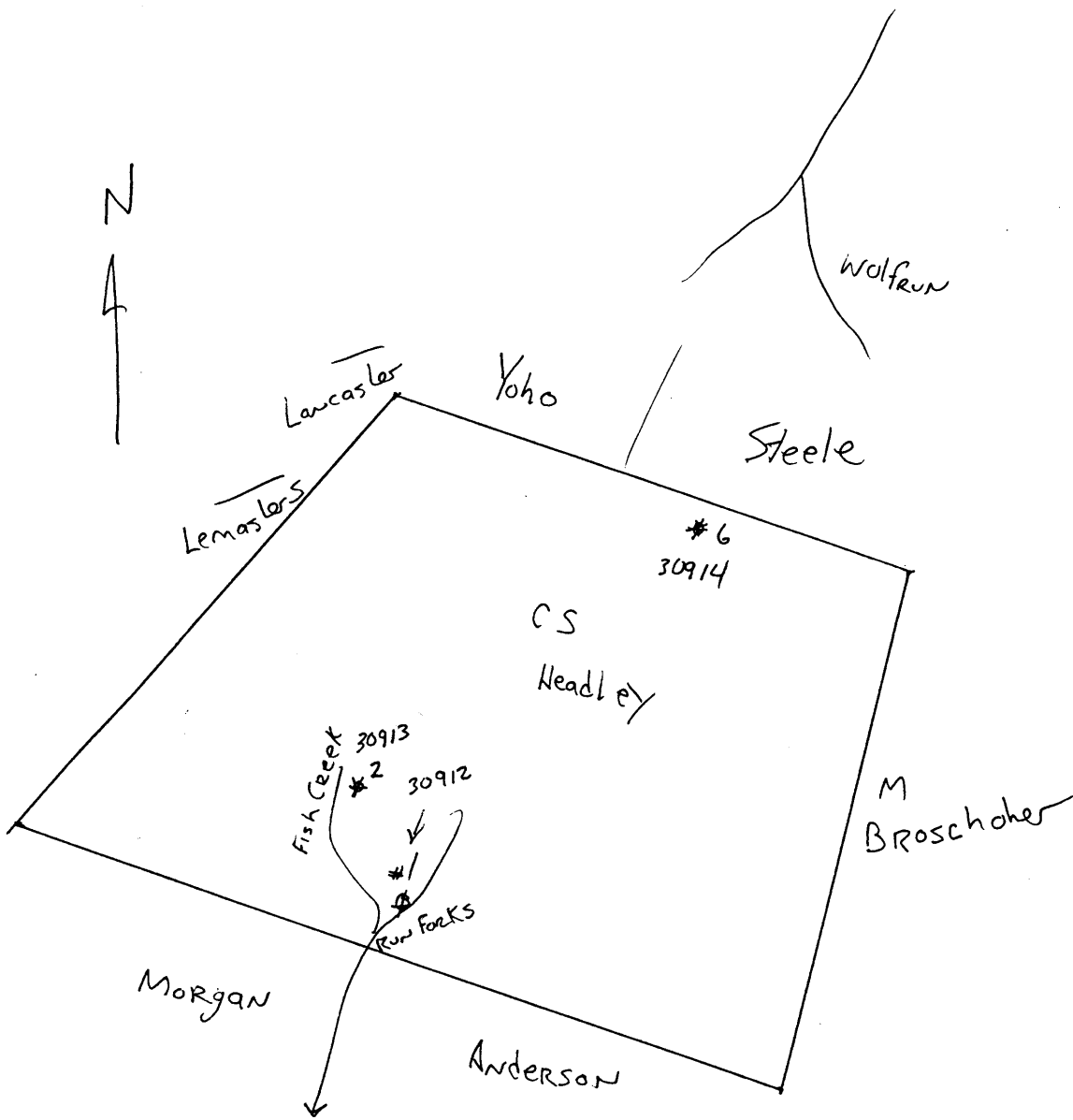
15' Quad _____
(sec.)

7.5' Quad Porters Falls

District Green

WELL LOCATION PLAT

County 103 **Permit** 30913



C. S. Headley No. 2 Well Record (116-9)(263F)

Green District, Wetzel County, W. Va.; on a branch of Fishing Creek, 1.2 miles northeast of Porters Falls; completed in November, 1916; authority, Silverhill Oil Company; elevation, 1072' (from Silverhill map).

	Top. Feet.	Bottom. Feet.
Conductor	16	--
Coal, <u>Hundred</u>	240	--
Coal, <u>Washington</u>	376	379
Coal, <u>Waynesburg</u>	455	--
Coal, <u>Uniontown</u>	574	580
Lime	600	650
Slate	650	665
Lime	665	720
Slate	720	740
Lime	740	760
Slate	760	790
Lime	790	815
Slate	815	822
Coal, <u>Pittsburgh</u>	822	825
Slate	825	840
Sand, <u>Minshall, Connellsville</u>	840	825
Red rock	825	890
Shell and slate	890	1005
Lime	1005	1050
Slate	1050	1100
Sand, <u>Grafton</u>	1100	1125
Coal, <u>Harlem</u>	1125	1127
Slate	1127	1150
Red rock	1150	1166
Sand, <u>Moundsville, Saltsburg</u>	1166	1200
Slate	1200	1295
Lime	1295	1310
Slate and shells	1310	1415
Coal, <u>Freeport</u> comes Freeport	1415	1420
Slate	1420	1460
So Sand, <u>First Salt</u> comes Freeport	1460	1525
Slate	1525	1565
Sand, <u>Second Salt</u> comes Freeport	1565	1580
Slate	1580	1635
Sand, <u>Third Salt</u> comes Freeport	1635	1700
Slate and shells	1700	1765
Coal, black slate	1765	1770
Slate	1770	1780
Sand, <u>Maxton, dark</u>	1780	1820
Slate and shells	1820	1952
<u>Big Lime</u> (gas at 1952')	1952	2012
Sand, <u>Big Injun</u>	2012	2250
Slate and shells	2250	2604
Sand, <u>Berea</u>	2604	2630

	Top. Feet.	Bottom. Feet.
Slate and shells	2620	2696
Red rock	2696	2760
Slate and shells	2760	2795
Sand, <u>Gordon Stray</u> (show of oil).....	2795	2830
Slate and shells	2830	2844
Sand, <u>Gordon</u> (first oil pay 2844-2849').	2844	2859
Total depth		2871

Shot with 15 qts.

Tubed at 2844' - 27' of anchor.

10" casing, 412' put in well and pulled out.

8¹/₂" casing, 1295' put in well and left in.

6⁵/₈" casing, 1962' put in well and left in.

5³/₁₆" liner - 5³/₁₆" casing used as liner in well
500', the same set and 2795' to 2895', and shoe on
top and bottom.

2" tubing put in well, 2870'.

Produced 32" in 100 bbl. tank first 24 hours after
shot, natural flow, - about 28 bbl.

Green District, Wetzel County, W. Va.

By Silver Hill Oil Co.

Elevation, 1072' B.

Conductor, 16'; 10" casing, 412'; 8", 1295'; 6-5/8", 1962'.

Shot Oct. 29, 1916, with 15 qts. Hole filled up 1800 ft. in 12 hrs. after shot. Started flowing Oct. 30, 1916; natural production, Nov. 2, 1916, 24 hrs. ending at 5 p. m., 32 inches in 100-bbl. tank. Started cleaning out Nov. 2, 1916. Reduced the hole to 4-7/8" at 2795'.

28-bbl. oil well in Gordon Sand.

	Top.	Bottom.
Coal	240	
Coal	376	379
Coal, Washington	455	
Coal, Waynesburg	574	580
Lime	600	650
Slate	650	665
Lime	665	720
Slate	720	740
Lime	740	760
Slate	760	790
Lime	790	815
Slate (Coal, Pittsburgh, at 822')	815	840
Cow Run Sand	840	885
Red rock	885	890
Slate and shells	890	1005
Lime	1005	1050
Slate	1050	1100
Little Dunkard Sand	1100	1125
Coal	1125	1127
Slate	1127	1150
Red rock	1150	1166
Big Dunkard Sand	1166	1200
Slate	1200	1295
Lime	1295	1310
Slate and shells	1310	1415
Coal	1415	1420
Slate	1420	1460
Sand	1460	1525
Slate	1525	1565
Sand	1565	1580
Slate	1580	1635
Sand	1635	1700
Slate and shells	1700	1765
Coal	1765	1770
Slate	1770	1780
Maxton Sand	1780	1820
Slate and shells (gas at 1952')	1820	1952
Big Lime	1952	2012
Keener Sand	2012	2090
Big Injun Sand	2090	2250
Slate and shells	2250	2604
Berea Grit	2604	2620

(OVER)

C. S. BRADLEY NO. 2 WELL (Continued).

	Top.	Bottom.
Slate and shells	2620	- 2696
Red rock	2696	- 2760
Slate and shells	2760	- 2795
Gordon Stray Sand (show of oil)	2795	- 2830
Slate and shells	2830	- 2844
Gordon Sand (oil, 2849-2855')	2844	- 2859
Total depth (2871')		2871