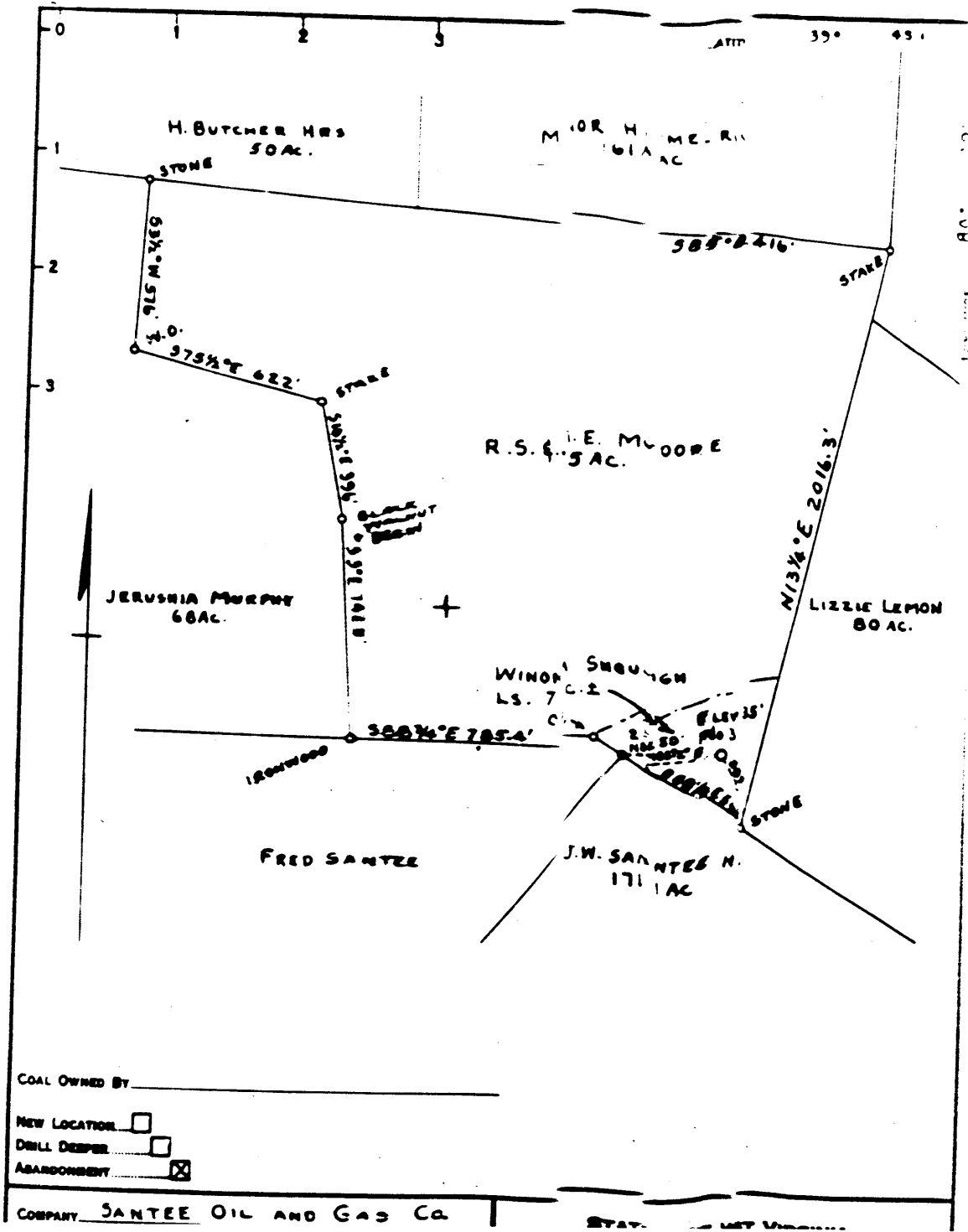
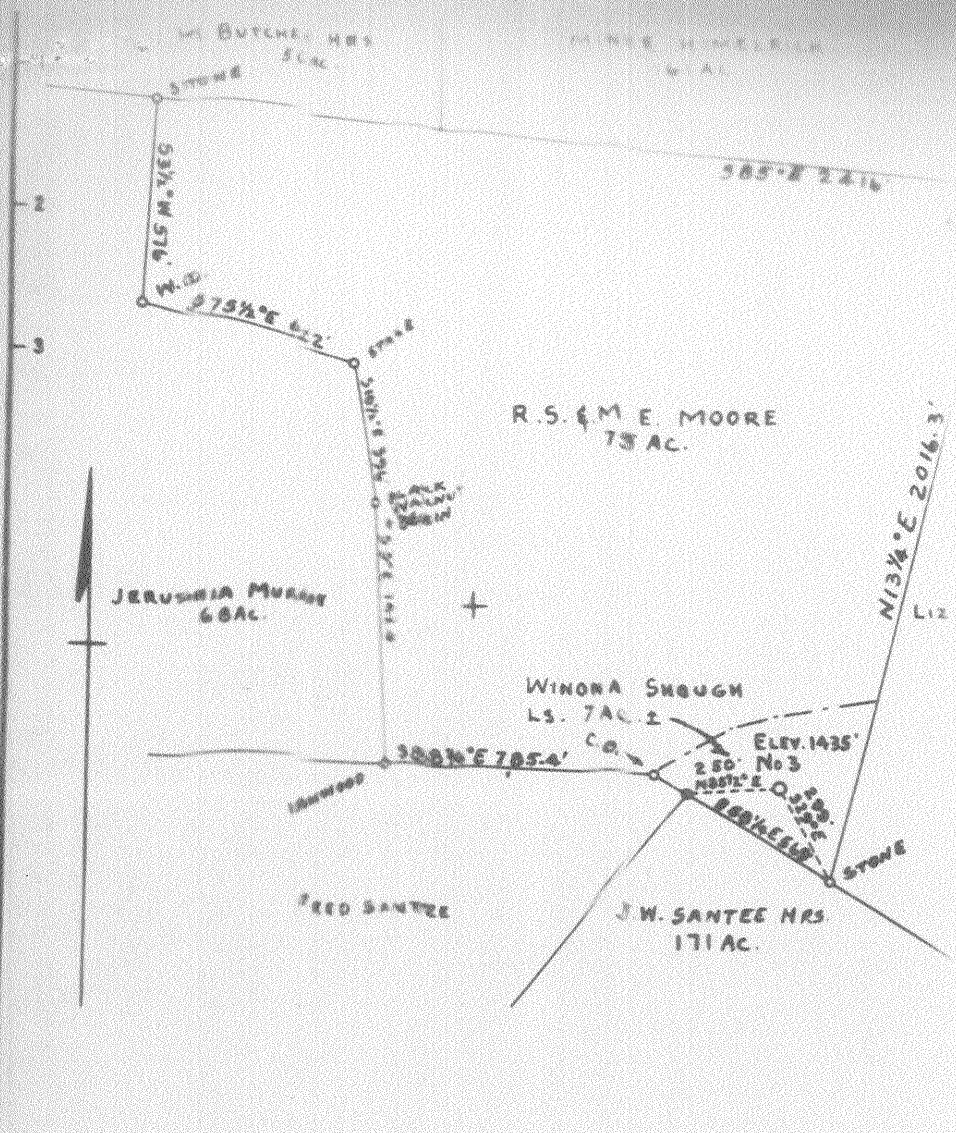


30959





COAL OWNED BY _____

NEW LOCATION

DRILL DEEPER

ABANDONMENT

COMPANY	SANTEE OIL AND GAS CO.		
ADDRESS	HUMPHRED NYA.		
FARM	WINONA SHOUGH (OW R.S. & M. E. MOORE)		
TRACT	1	ACRES	75
LEASE NO.	-		
WELL (FARM) NO.	2	SERIAL NO.	-
ELEVATION (SPIRIT LEVEL)	1435'		
QUADRANGLE	MANHINGTON NW		
COUNTY	WETZEL		

STATE OF WEST VIRGINIA
 DEPARTMENT OF MINES
 OIL AND GAS DIVISION
 CHARLESTON

WELL LOCATION M

FILE NO. W.C.F. - 959-A

Church District, Wetzel County, W. Va.

By The Pure Oil Co.

Well started June 18, 1906; completed, July 21, 1906.

Contractor, Schaffner Bros.

Filled up 225 ft. in 10 hrs.; second pay best.

Hole reduced to 6" at 2342'.

16' conductor; 10" casing, 395' (pulled); 8", 1635' (1100' pulled); 6-5/8", 2221'.

Shot July 24, 1906, by Fisher Torpedo Co., with 80 qts.;

19' shell; 7' anchor; depth of well when shot, 2409';

depth top of shot, 2385'; bridged.

Record from E. Townley, Room 2308, 35 E. Wacker Drive,
Chicago, Ill., March 13, 1931.

	Top.	Bottom.
Pittsburgh Coal	1235	- 1242
Little Dunkard Sand	1635	- 1685
Gas Sand	1845	- 2125
Salt Sand	2145	- 2260
Red rock	2272	- 2342
Marion Sand	2342	- 2402
(1st pay, 2390-2395'; 2nd pay, 2400-2402')		
Total depth		2411