

**Latitude**

**Longitude**

|  |       |
|--|-------|
|  |       |
|  | +     |
|  | 1.49s |
|  | 1.33w |
|  |       |

**Topo Location**

|           |       |          |       |
|-----------|-------|----------|-------|
| 7.5' Loc. | _____ | 15' Loc. | _____ |
|           | _____ | (calc.)  | _____ |

**Company** Hope Natural Gas Co.

**Farm** ET Stewart # 948

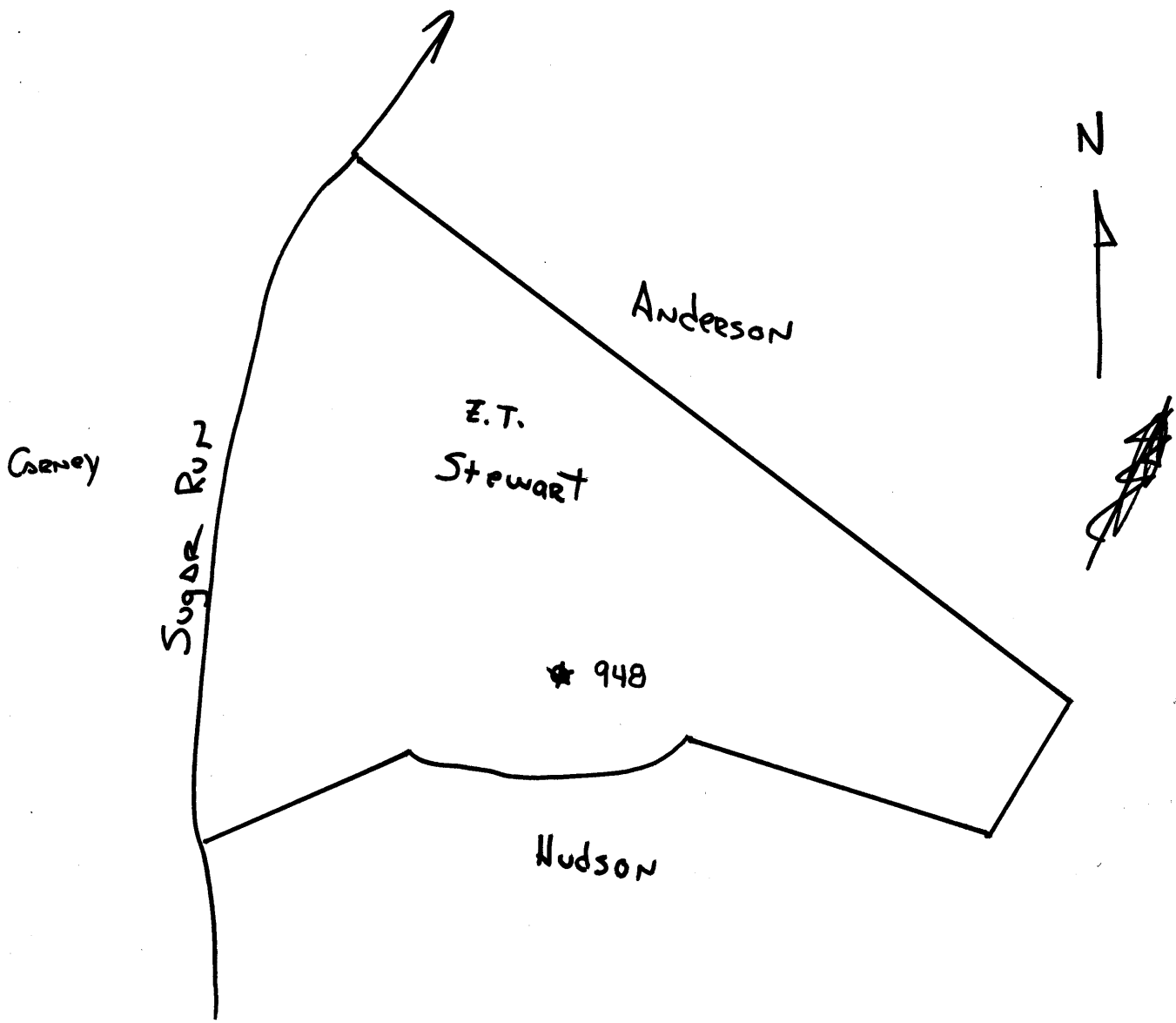
**15' Quad** \_\_\_\_\_  
(sec.)

**7.5' Quad** Lilletto

**District** Center

**WELL LOCATION PLAT**

**County** 103 **Permit** 30980





STATE OF WEST VIRGINIA  
DEPARTMENT OF MINES  
OIL AND GAS DIVISION

1411

AB  
980-A

WELL RECORD

Oil or Gas Well (KIND)

Permit No. \_\_\_\_\_

Company Hope Natural Gas Company.

Address 445 West Main St. Clarksburg, W. Va.

Farm Z. T. Stewart Acres 50

Location (waters) \_\_\_\_\_

Well No. 948 Elev. 1342

District Center County Wetzel

The surface of tract is owned in fee by \_\_\_\_\_  
Address \_\_\_\_\_

Mineral rights are owned by \_\_\_\_\_  
Address \_\_\_\_\_

Drilling commenced May 15, 1907

Drilling completed May 29, 1907

Date Shot \_\_\_\_\_ From \_\_\_\_\_ To \_\_\_\_\_

With \_\_\_\_\_

Open Flow \_\_\_\_\_ /10ths Water in \_\_\_\_\_ Inch  
\_\_\_\_\_ /10ths Merc. in \_\_\_\_\_ Inch

Volume \_\_\_\_\_ Cu. Ft.

Rock Pressure \_\_\_\_\_ lbs. \_\_\_\_\_ hrs.

Oil \_\_\_\_\_ bbls., 1st 24 hrs.

Fresh water none recorded feet \_\_\_\_\_ feet

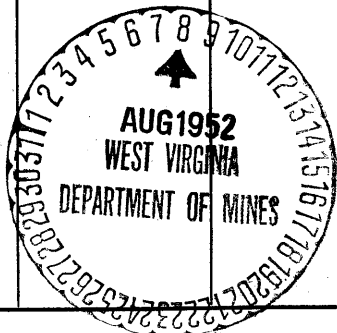
Salt water none recorded feet \_\_\_\_\_ feet

| Casing and Tubing | Used in Drilling | Left in Well | Packers        |
|-------------------|------------------|--------------|----------------|
| Size              |                  |              |                |
| 16                |                  |              | Kind of Packer |
| 13                |                  |              |                |
| 10                | 316              | 316          | Size of        |
| 8 1/4             | 1575             | 1575         |                |
| 6 5/8             | 2308             | 2308         | Depth set      |
| 5 3/16            | 2520             | 2520         |                |
| 3                 |                  |              | Perf. top      |
| 2                 | 3350             | 3350         | Perf. bottom   |
| Liners Used       |                  |              | Perf. top      |
|                   |                  |              | Perf. bottom   |

NOT CASING CEMENTED SIZE No. Ft. Date

COAL WAS ENCOUNTERED AT 964 FEET 48 INCHES  
1065 FEET 84 INCHES FEET INCHES  
FEET INCHES FEET INCHES

| Formation       | Color | Hard or Soft | Top  | Bottom | Oil, Gas or Water | Depth Found | Remarks |
|-----------------|-------|--------------|------|--------|-------------------|-------------|---------|
| Mapletown Coal  |       |              | 964  | 968    |                   |             |         |
| Pittsburgh Coal |       |              | 1065 | 1072   |                   |             |         |
| Big Dunkard     |       |              | 1558 | 1625   |                   |             |         |
| First Salt      |       |              | 1790 | 1950   |                   |             |         |
| Second Salt     |       |              | 2010 | 2125   |                   |             |         |
| Little Lime     |       |              | 2243 | 2260   |                   |             |         |
| Pencil cave     |       |              | 2260 | 2265   |                   |             |         |
| BIG Lime        |       |              | 2265 | 2310   |                   |             |         |
| Big Injun       |       |              | 2310 | 2568   | gas               | 2315 2415   |         |
| Gantz           |       |              | 2893 | 2916   |                   |             |         |
| Fifty foot      |       |              | 3027 | 3036   |                   |             |         |
| Thirty foot     |       |              | 3058 | 3066   |                   |             |         |
| Gordon stray    |       |              | 3087 | 3096   |                   |             |         |
| Gordon          |       |              | 3123 | 3180   | show oil          | 3169        |         |
| Fourth          |       |              | 3216 | 3232   | gas               | 3223        |         |
| Total depth     |       |              |      | 3350   |                   |             |         |



(Over)  
FEB 11 1953

| Formation | Color | Hard or Soft | Top | Bottom | Oil, Gas or Water | Depth Found | Remarks |
|-----------|-------|--------------|-----|--------|-------------------|-------------|---------|
|           |       |              |     |        |                   |             |         |



Date **August 5, 1952**

, 19

**Hope Natural Gas Company.**

APPROVED \_\_\_\_\_, Owner

By \_\_\_\_\_

B. F. [Signature]  
(Title)