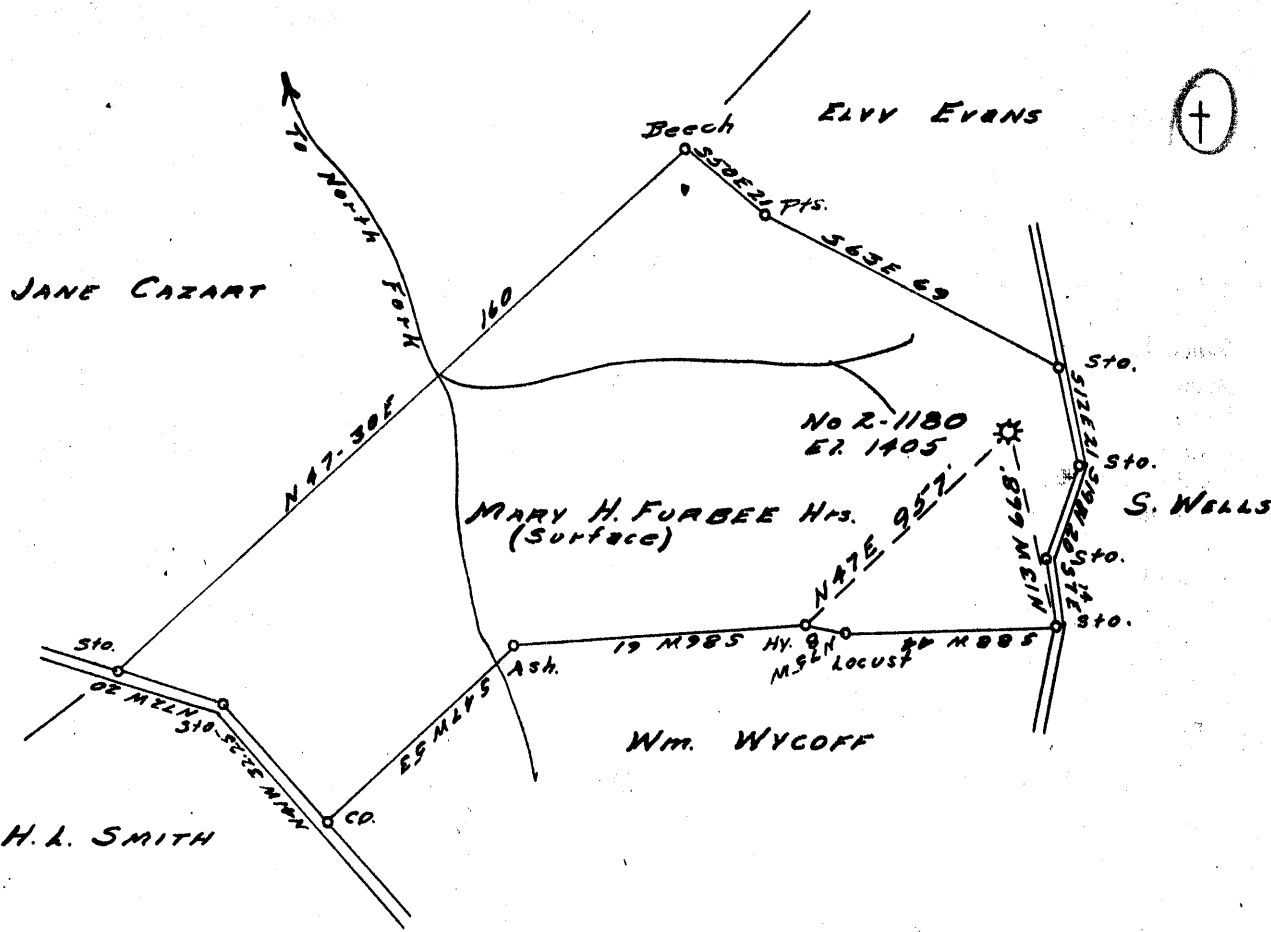


Latitude 79° 35'

Longitude 80° 30'



New Location...   
 Drill Deeper.....   
 Abandonment.....

OCT 19 1955

0.73  
~~0.75~~  
 3.30

Company CARNEGIE NATURAL GAS  
 Address PITTSBURGH PA.  
 Farm W.S. FURBEE  
 Tract \_\_\_\_\_ Acres 84 Lease No. E-8224-74  
 Well (Farm) No. 2 Serial No. E 1180  
 Elevation (Spirit Level) 1405'  
 Quadrangle LITTLETON SE.  
 County WETZEL District GRANT  
 Engineer John O. Theobald  
 Engineer's Registration No. 1850  
 File No. \_\_\_\_\_ Drawing No. \_\_\_\_\_  
 Date 9-21-55 Scale 1" = 40 FEET

STATE OF WEST VIRGINIA  
 DEPARTMENT OF MINES  
 OIL AND GAS DIVISION.  
 CHARLESTON

WELL LOCATION MAP  
 FILE NO. WET-1017-A

+ Denotes location of well on United States Topographic Maps, scale 1 to 62,500, latitude and longitude lines being represented by border lines as shown.

- Denotes one inch spaces on border line of original tracing.

W.S. FURBEE No. 2 (E-1180) - CARNEGIE N.A. 6 - WET-1017-A



STATE OF WEST VIRGINIA  
DEPARTMENT OF MINES  
OIL AND GAS DIVISION

1446

*Substation Grant*  
No. *67-A*

WELL RECORD

Oil or Gas Well GAS  
(KIND)

Permit No. 67-A

TO BE ABANDONED

Company Carnegie Natural Gas Company  
Address 1015 Frick Building, Pittsburgh 19, Pa.  
Farm W. S. Furbee Acres 8 1/4  
Location (waters) North Fork  
Well No. 1180 Elev. 1405  
District Grant County Wetzel  
The surface of tract is owned in fee by See Below  
Address \_\_\_\_\_  
Mineral rights are owned by See Below  
Address \_\_\_\_\_  
Drilling commenced 7-30-23  
Drilling completed 10-24-23  
Date Shot \_\_\_\_\_ From \_\_\_\_\_ To \_\_\_\_\_  
With \_\_\_\_\_

Casing and Tubing	Used in Drilling	Left in Well	Packers
Size			Kind of Packer
16			
13			
10	300	300	Size of
8 1/4	1660	1660	
6 1/2	2106	2106	Depth set
5 3/16	3268	3268	
3			Perf. top
2			Perf. bottom
Liners Used			Perf. top
			Perf. bottom

Open Flow \_\_\_\_\_ /10ths Water in \_\_\_\_\_ Inch  
\_\_\_\_\_ /10ths Merc. in \_\_\_\_\_ Inch  
Volume 490,000 Cu. Ft.  
Rock Pressure \_\_\_\_\_ lbs. \_\_\_\_\_ hrs.  
Oil \_\_\_\_\_ bbls., 1st 24 hrs.  
Fresh water \_\_\_\_\_ feet \_\_\_\_\_ feet  
Salt water 2,005 feet 2,067 feet

CASING CEMENTED \_\_\_\_\_ SIZE \_\_\_\_\_ No. Ft. \_\_\_\_\_ Date \_\_\_\_\_

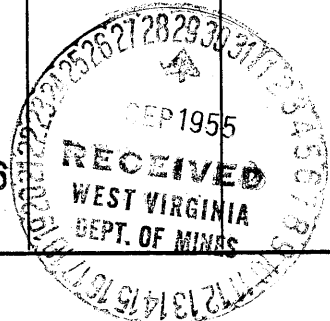
COAL WAS ENCOUNTERED AT 1080 FEET \_\_\_\_\_ INCHES  
1175 FEET \_\_\_\_\_ INCHES FEET \_\_\_\_\_ INCHES  
\_\_\_\_\_ FEET \_\_\_\_\_ INCHES FEET \_\_\_\_\_ INCHES

Formation	Color	Hard or Soft	Top	Bottom	Oil, Gas or Water	Depth Found	Remarks
Mapleton Coal			1080	1085			
Pittsburgh Coal			1175	1183			
Little Dunkard			1508	1595			
Big Dunkard			1655	1705			
Gas Sand			1825	1850			
First Salt Sand			1940	2028	Water	2005	
Second Salt Sand			2050	2216	Water	2067	
Maxon Sand			2310	2335			
Little Lime			2373	2388			
Pencil Cave			2388	2392			
Big Lime			2392	2465			
Big Injun			2465	2630	Gas	2475	
					Gas	2551	
Fifty Foot Sand			3124	3141			
Thirty Foot Sand			3217	3242			
Gordon Stray			3264	3281			
Gordon Sand			3284	3320	Gas	3289 - 92	
					Gas	3306 - 08	
Fourth Sand			3343	3357			
TOTAL DEPTH				3453			

OWNERS OF SURFACE AND MINERAL RIGHTS

R. D. Furbee & Howard R. Furbee, Trustees of Estate of W. S. Furbee, Deceased  
P. O. Box 8,  
Mannington, W. Va.  
Charlotte Koen & Mary Gail Koen,  
Mannington, W. Va.  
Blanche Koen Beaty,  
17 Pleasant Street,  
Mannington, W. Va.

JAN 23 1956



Formation	Color	Hard or Soft	Top	Bottom	Oil, Gas or Water	Depth Found	Remarks

Date September 27, 19 55

APPROVED CARNEGIE NATURAL GAS COMPANY, Owner

By *D.A. Archer*  
 (Title) Land Agent