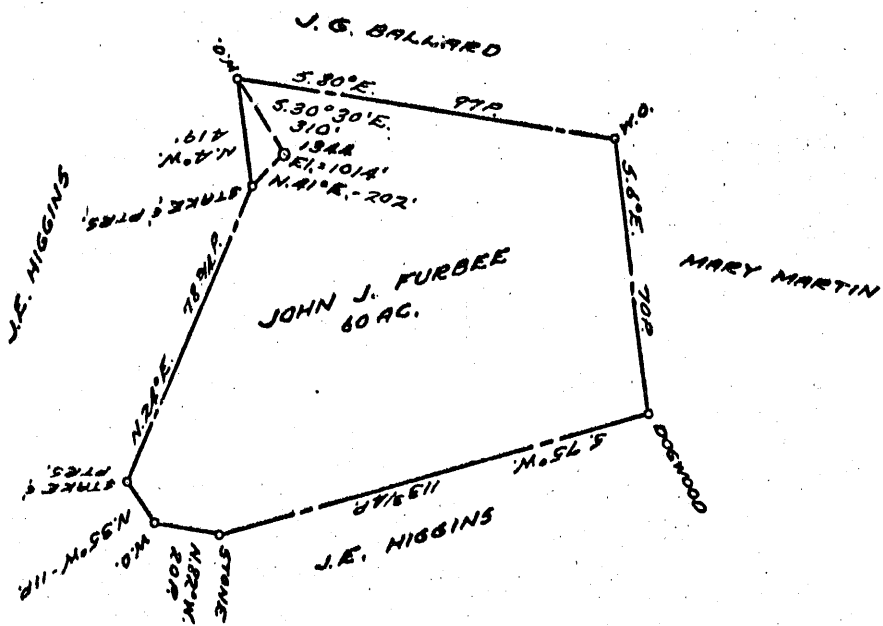


LATITUDE

° 35

LONGITUDE

80 ° 40'



COAL OWNED BY _____

NEW LOCATION.....

DRILL DEEPER.....

ABANDONMENT.....

DEC. 12 1958

3.78

~~3.78~~

4.32

~~4.32~~

COMPANY THE MANUFACTURERS LIGHT & HEAT

ADDRESS 800 UNION TRUST BLDG. PGH. PA.

FARM JOHN J. FURBEE

TRACT _____ ACRES 60 LEASE NO. 3013

WELL (FARM) No. 1 SERIAL No. 1344

ELEVATION (SPIRIT LEVEL) 1014

QUADRANGLE LITTLETON

COUNTY WETZEL DISTRICT GREEN

ENGINEER Thomas E. Virgin M

ENGINEER'S REGISTRATION No. 1503

FILE No. _____ DRAWING No. Y-15-500

DATE 9 NOVEMBER 56 SCALE 1" = 800'

STATE OF WEST VIRGINIA
 DEPARTMENT OF MINES
 OIL AND GAS DIVISION
 CHARLESTON

WELL LOCATION MAP

FILE No. Wet-1043-A

+ DENOTES LOCATION OF WELL ON UNITED STATES TOPOGRAPHIC MAPS. SCALE 1 TO 62,500. LATITUDE AND LONGITUDE LINES BEING REPRESENTED BY BORDER LINES AS SHOWN.

- DENOTES ONE INCH SPACES ON BORDER LINE OF ORIGINAL TRACING.

JOHN J. FURBEE No. 1 (1344) - M, L. & H, Co, -

WET-1043-A



STATE OF WEST VIRGINIA
DEPARTMENT OF MINES
OIL AND GAS DIVISION

1476

Quadrangle W. H. H. H. H.
Permit No. 1043-A

WELL RECORD

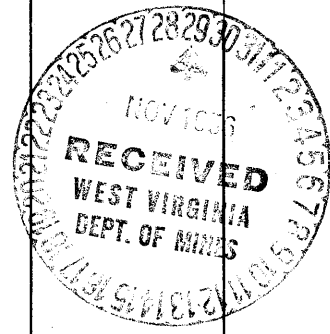
~~Oil or Gas Well~~ (KIND)

Company THE MANUFACTURERS LIGHT AND HEAT COMPANY
Address 800 UNION TRUST BLDG., PGH., PA.
Farm John J. Furbee Acres 60
Location (waters) _____
Well No. 1-1344 Elev. 1014'
District Green County Wetzel
The surface of tract is owned in fee by _____
Address _____
Mineral rights are owned by _____
Address _____
Drilling commenced Sept. 5, 1900
Drilling completed March 9, 1901
Date Shot _____ From _____ To _____
With _____
Open Flow /10ths Water in _____ Inch
/10ths Merc. in _____ Inch
Volume _____ Cu. Ft.
Rock Pressure _____ lbs. _____ hrs.
Oil _____ bbls., 1st 24 hrs.
Fresh water _____ feet _____ feet
Salt water _____ feet _____ feet

Casing and Tubing	Used in Drilling	Left in Well	Packers
Size			
16			Kind of Packer
13			
10	246		Size of
8 1/4	1178		
6 5/8	1765		Depth set
5 3/16	2204		
3			Perf. top
2			Perf. bottom
Liners Used			Perf. top
			Perf. bottom

CASING CEMENTED _____ SIZE _____ No. Ft. _____ Date _____
COAL WAS ENCOUNTERED AT 707 FEET _____ INCHES
_____ FEET _____ INCHES FEET _____ INCHES
_____ FEET _____ INCHES FEET _____ INCHES

Formation	Color	Hard or Soft	Top	Bottom	Oil, Gas or Water	Depth Found	Remarks
Pittsburgh Coal				707			
Salt Sand - 1st			←	1490			
Salt Sand - 2nd				1615	Water at 1646'		
Pencil Cave			1874	1884			
Big Lime			1914				
Big Injun				← 1949			
Gas			1961	1971	Water at 2028'		
Gordon Stray Gas			2777	2785			
Gordon Sand Gas			2789	2797			
TOTAL DEPTH:			2797				



JUN 20 1907

Formation	Color	Hard or Soft	Top	Bottom	Oil, Gas or Water	Depth Found	Remarks

Date November 27, 19 56

APPROVED THE MANUFACTURERS LIGHT AND HEAT CO Owner

By Walter A. Penn
OREGIX LAND AGENT