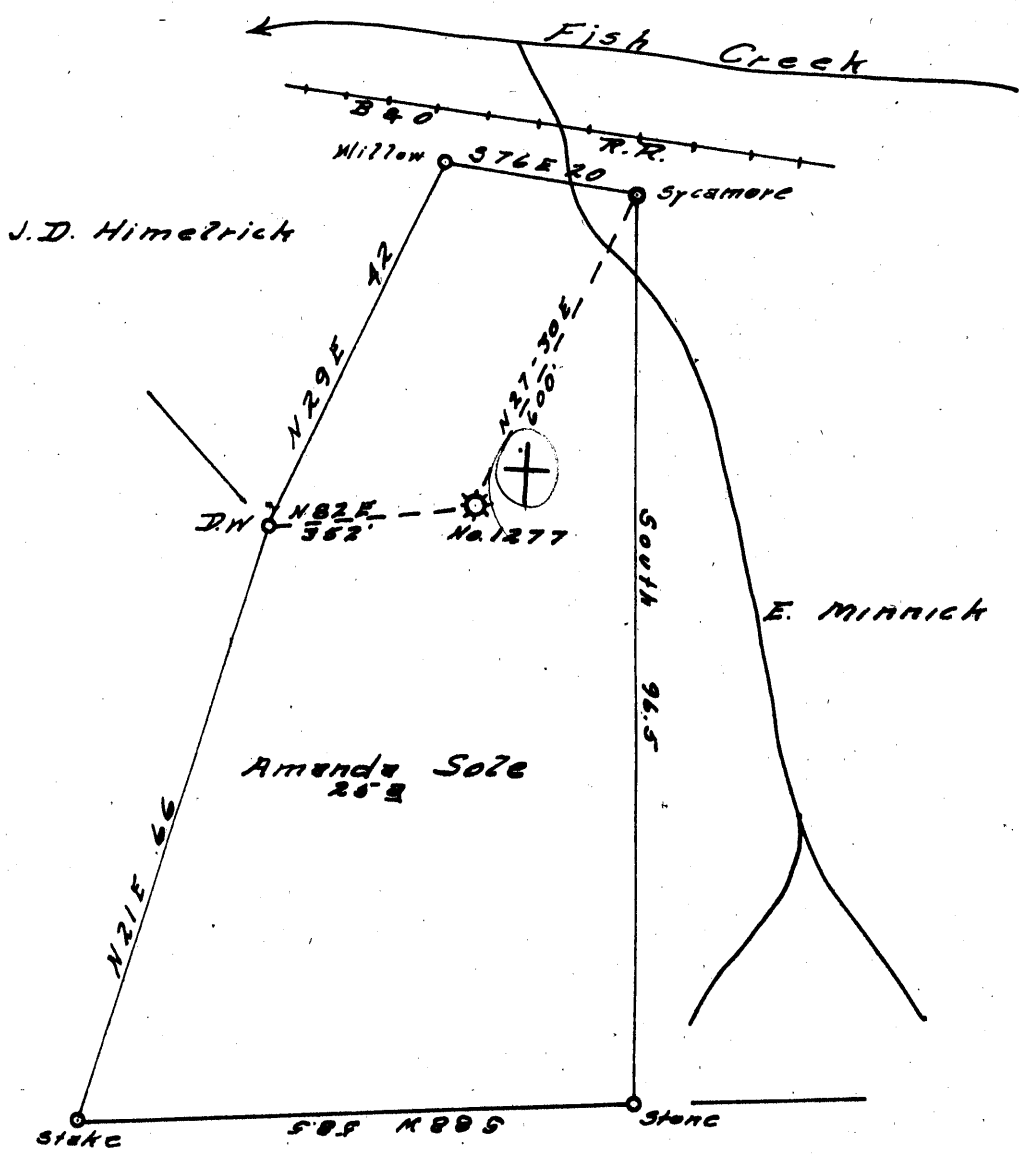


Latitude 39° 45'

Longitude 80° 25'



- New Location.
- Drill Deeper. ....
- Redrill .....
- Abandonment .....

NOV 7 1960

3.16  
 7.7 W  
 4.5 R  
 4.42

Company CARNEGIE NATURAL GAS  
 Address PITTSBURGH, Pa.  
 Farm AMANDA SOLE  
 Tract \_\_\_\_\_ Acres 2.5 Lease No. E 6814-72  
 Well (Farm) No. 2 Serial No. E 1277  
 Elevation (Spirit Level) 1125'  
 Quadrangle MANNINGTON N.W.  
 County WETZEL District CHURCH  
 Engineer John Ottobach  
 Engineer's Registration No. 1850  
 File No. \_\_\_\_\_ Drawing No. \_\_\_\_\_  
 Date 10-10-60 Scale 1" = 20 Feet

STATE OF WEST VIRGINIA  
 DEPARTMENT OF MINES  
 OIL AND GAS DIVISION  
 CHARLESTON

**WELL LOCATION MAP**  
 FILE NO. Wet-1121-A

+ Denotes location of well on United States Topographic Maps, scale 1 to 62,500, latitude and longitude lines being represented by border lines as shown.

— Denotes one inch spaces on border line of original tracing.

AMANDA SOLE no. 2 (E-1277) CARNEGIE N.G. Co. — WET-1121-A