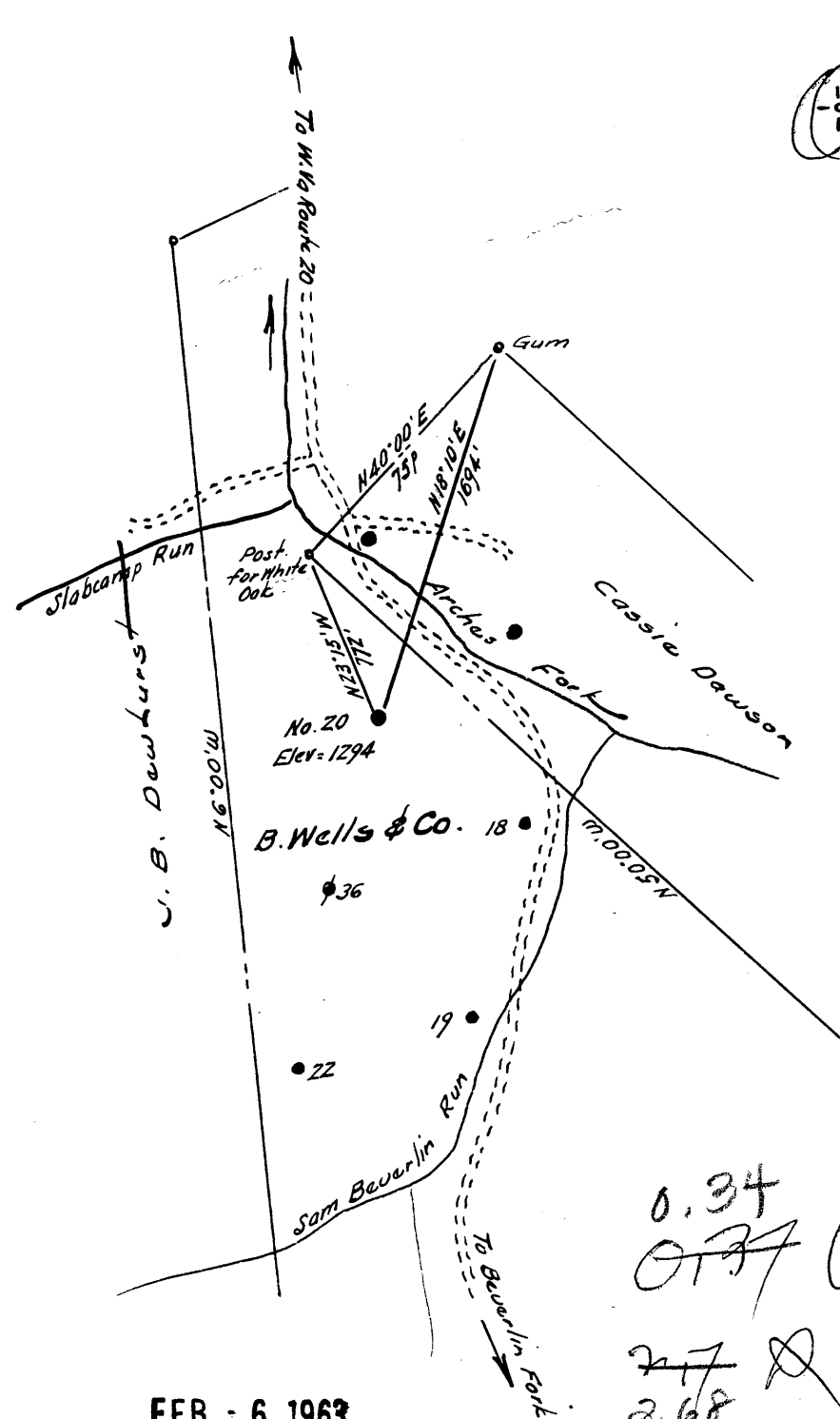


Latitude 39° 30'

Longitude 80° 35'



New Location  
 Drill Deeper  
 Abandonment

FEB - 6 1963

0.34  
~~0.77~~ W  
 2.7  
 2.68

Company P. & J. DEVELOPMENT CO.  
 Address Hamlin, W. Va.  
 Farm Blackshere Wells & Co.  
 Tract \_\_\_\_\_ Acres 500+ Lease No. \_\_\_\_\_  
 Well (Farm) No. Twenty Serial No. \_\_\_\_\_  
 Elevation (Spirit Level) 1294  
 Quadrangle Centerpoint  
 County Wetzel District Grant  
 Engineer M. Hoet Jr.  
 Engineer's Registration No. 1227  
 File No. \_\_\_\_\_ Drawing No. \_\_\_\_\_  
 Date Dec. 14, 1962 Scale 1" = 800'

STATE OF WEST VIRGINIA  
 DEPARTMENT OF MINES  
 OIL AND GAS DIVISION  
 CHARLESTON

**WELL LOCATION MAP**  
 FILE NO. Wet - 1154-A

+ Denotes location of well on United States Topographic Maps, scale 1 to 62,500, latitude and longitude lines being represented by border lines as shown.  
 - Denotes one inch spaces on border line of original tracing.