

0 1 2 3 LATITUDE 39° 40'

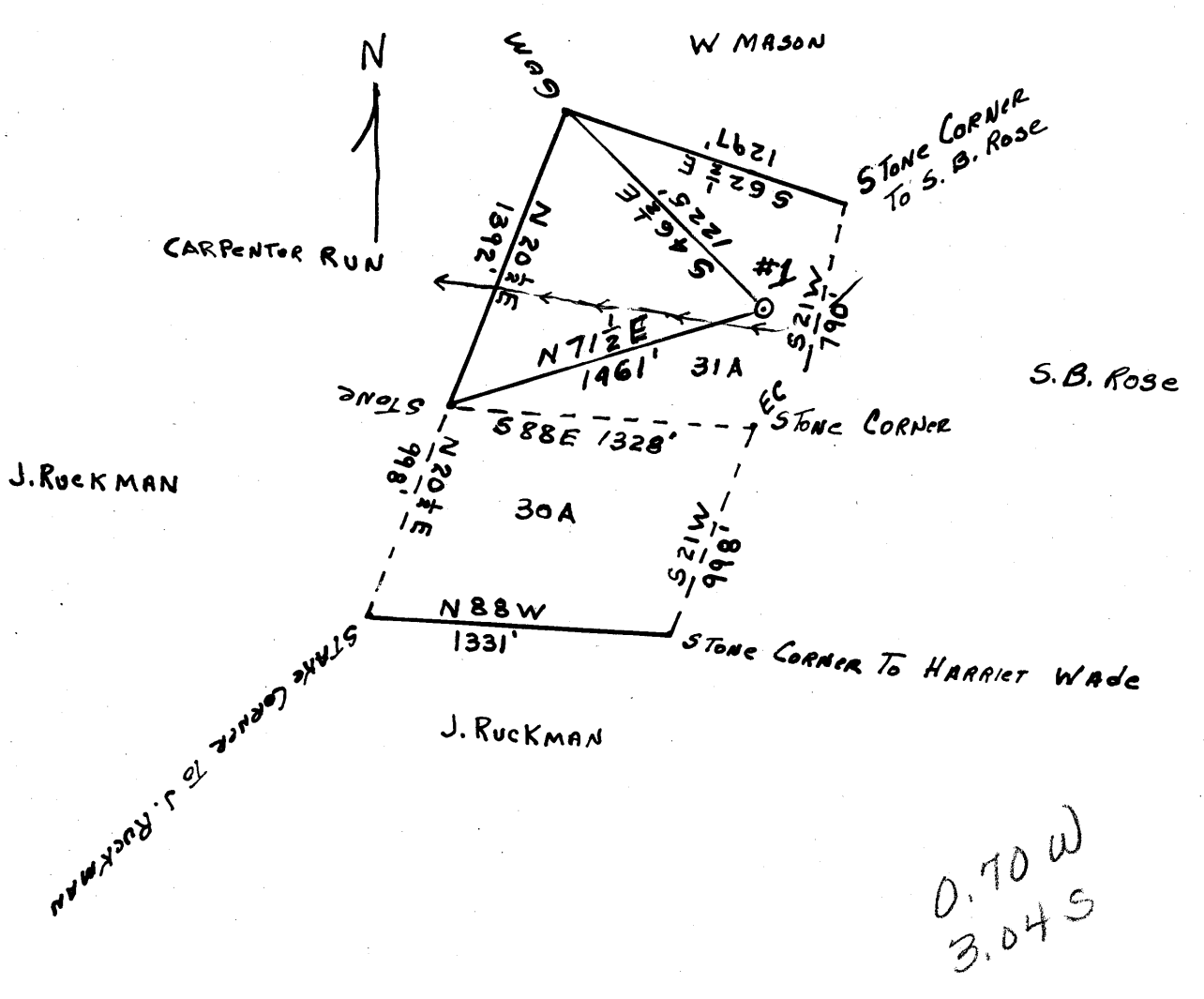
1

2

3

LONGITUDE 80° 40'

To Pa Loc +



0.70 W
3.04 S

1/2 F.R. HUFFMAN, 90 BONAR AVE, WAYNESBURG, PA
3/4 R. WHITE, PO BOX 2, MORGANTOWN, WVA

- COAL OWNED BY
- NEW LOCATION
 - RECONDITION
 - DRILL DEEPER
 - ABANDONMENT

"I, the undersigned, hereby certify that this map is correct to the best of my knowledge and belief and shows all the information required by paragraph 6 of the rules and regulations of the oil and gas section of the mining laws of West Virginia."
Minimum degree of accuracy is one part in 200

Signed A.T. Gabschen

COMPANY WILLIAM CASSADY
 ADDRESS 4303 WHITED DRIVE, VIENNA, W. VA.
 FARM J. CARPENTER (SURFACE E. PALMER)
 MAP _____ ACRES 31 (ORIG 18) LEASE NO. _____
 WELL (FARM) NO. #1 SERIAL NO. _____
 ELEVATION (SPIRIT LEVEL) 873
 QUADRANGLE LITTLETON-WC
 COUNTY WETZEL DISTRICT GREEN
 POINT OF PROVEN ELEVATION C & GS P-130
 FILE NO. FBK 13 P 62 DRAWING NO. _____
 DATE 5-11-65 SCALE 1" = 800'

STATE OF WEST VIRGINIA
 DEPARTMENT OF MINES
 OIL AND GAS DIVISION
 CHARLESTON
 WELL LOCATION MAP
 FILE NO. WEF-1180-A

+ DENOTES LOCATION OF WELL ON UNITED STATES TOPOGRAPHIC MAPS, SCALE 1 TO 62,500. LATITUDE AND LONGITUDE LINES BEING REPRESENTED BY BORDER LINES AS SHOWN.
 - DENOTES ONE INCH SPACES ON BORDER LINE OF ORIGINAL TRACING.