

Latitude

Longitude

2.82s
.01w

Topo Location

7.5' Loc. _____ 15' Loc. _____
_____ (calc.) _____

Company BARRON Kidd

Farm W G Snedgrass # 3

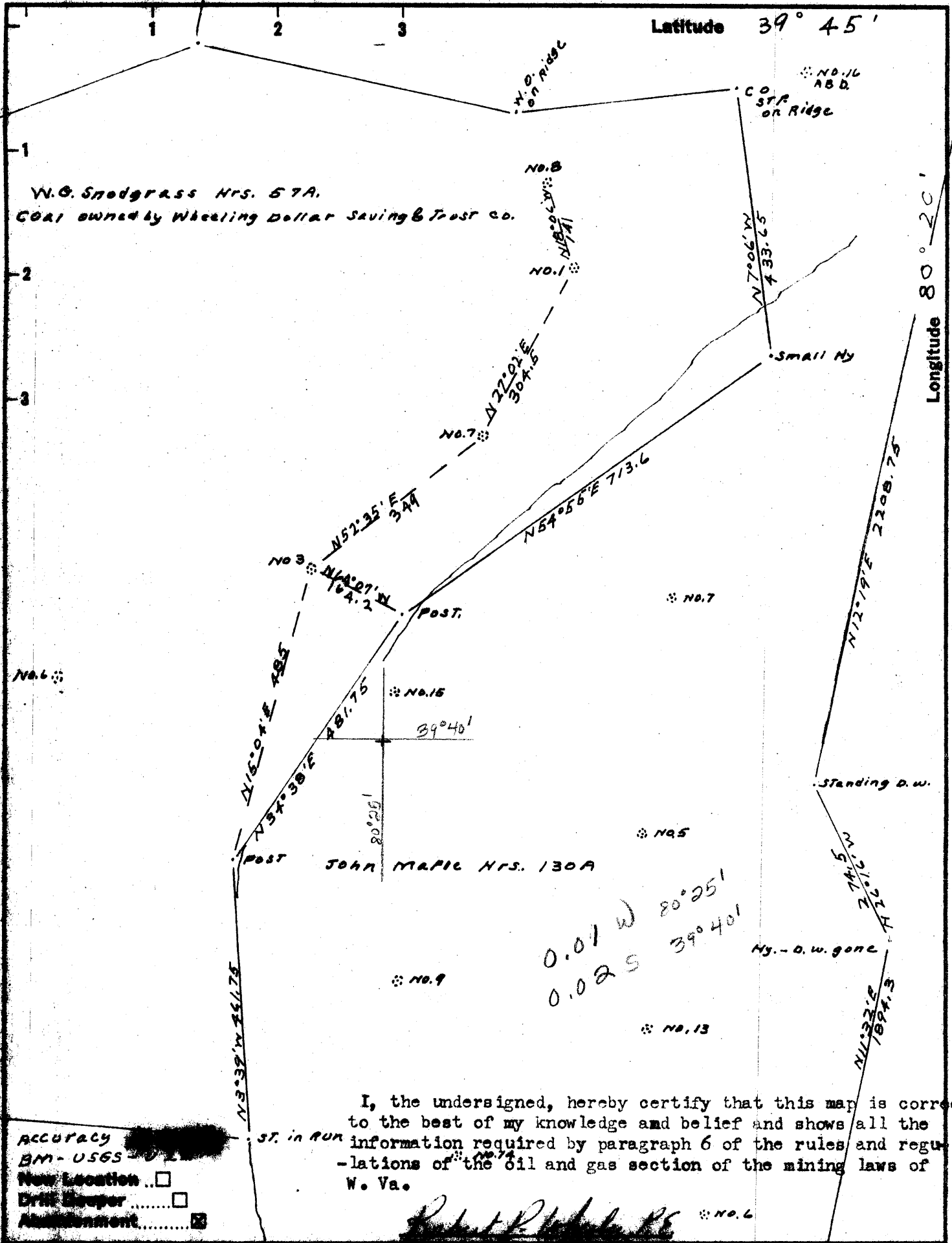
15' Quad _____
(sec.)

7.5' Quad Hundred

District Church

WELL LOCATION PLAT

County 103 **Permit** 31206



I, the undersigned, hereby certify that this map is correct to the best of my knowledge and belief and shows all the information required by paragraph 6 of the rules and regulations of the oil and gas section of the mining laws of W. Va.

Accuracy
 BM - USGS
 New Location
 Drill Hoop
 Measurement

Company	Barron Kidd Oil & Gas
Address	273 Melbourne Place NORTHINGTON, OHIO
Farm	W.G. Snodgrass Hrs
Tract	Acres 57 Lease No.
Well (Farm) No.	3 Serial No.
Elevation (Spirit Level)	1244.8
Quadrangle	Mannington NE NW
County	Wetzel District Church
Engineer	R. H. ... Surveyor J. Herbert Rainboham
Engineer's Registration No.	352
File No.	Drawing No.
Date	6-16-66 Scale 1" = 200'

STATE OF WEST VIRGINIA
 DEPARTMENT OF MINES
 OIL AND GAS DIVISION
 CHARLESTON

WELL LOCATION MAP
 FILE NO. WET-1206-A

+ Denotes location of well on United States Topographic Maps, scale 1 to 62,500, latitude and longitude lines being represented by border lines as shown.

- Denotes one inch spaces on border line of original tracing.

Church District, Wetzel County, W. Va.

By The Pure Oil Co.

Commenced Aug. 29, 1904; completed, Oct. 6, 1904.

Contractors, Reese, Heasley & Meals.

First pay very light, only filled up 10 ft. above tools.

Second pay filled up 1800 ft. in 12 hrs.

Water at 2000 ft.

Flowed 75 bbls. (oil) natural.

Holed reduced from 6-5/8" to 6" at 2197'.

From bottom of casing to top of Maxton, 184 feet.

10-20-04, 180 ft. of 5-3/16" liner put in on top of Maxton Sand, bottom 2195', top 2015'.

1918 - cased with 5-3/16" on bottom, with bottom joint perforated; two packers used. (Results, no good).

14" conductor; 10" casing, 165' (pulled); 8 1/2", 1415' (950' pulled); 6-5/8", 2011'; 5-3/16" string with packer.

Shot Oct. 20, 1904, by Fisher Torpedo Co., shooter, Jas. Thompson; with 60 qts.; 16' shell; 3' anchor; depth of well when shot, 2235'; depth top of shot, 2216'; good results.

Shot June 1, 1905, by Fisher Torpedo Co., shooter, Jas. Thompson; with 80 qts.; 19' shell; 3' anchor; depth of well when shot, 2237'; depth top of shot, 2215'; bridged.

Shot Feb. 22, 1907, by Fisher Torpedo Co., with 60 qts.; 16' shell; 5' anchor; depth of well when shot, 2237'; depth top of shot, 2216'; bridged.

Shot July 16, 1908, with 60 qts.; 10' shell; depth of well when shot, 2237'; depth top of shot, 2210'; bridged.

Record from E. Townley, Room 2308, 35 E. Wacker Drive, Chicago, Ill., March 13, 1931.

	Top.	Bottom.
Pittsburgh Coal	1040	
Little Dunkard Sand	1415	- 1452
Big Dunkard Sand	1535	- 1600
Salt Sand	1935	- 2072
Red Gave	2115	- 2185
Maxton Sand (1st pay, 2218-2222'; 2nd pay, 2227-2232')	2195	
Total depth	■	2235

Underground

WELL RECORD

31206

Permit No.

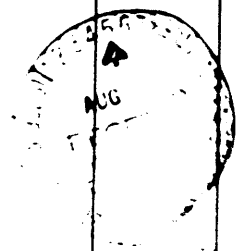
Company: WATSON-KIST
 Address: 273 Melbourne Place, Worthington, Ohio
 Farm: W. O. Sandgrass Acres: Size:
 Location (waters): Elev: 1240
 Well No: 3 District: Church County: Wetzel
 The surface of tract is owned in fee by H. Clavis - C. A. Clavis
 Address: Barton, West Virginia
 Mineral rights are owned by Same
 Address:
 Drilling commenced: 8/29/04
 Drilling completed: 10/6/04
 Date Shot: 10/20/04 From To
 With 60 qts. Liners Used: 5-3/16
 Open Flow: /10ths Water in Inch
 /10ths Merc in Inch
 Volume: 75 bbls./24 Attach copy of cementing record.
 Rock Pressure: lbs. CASING CEMENTED SIZE No.
 Oil: hrs. Amount of cement used (bags)
 bbls. 1st 24 hrs. Name of Service Co.

WELL ACIDIZED (DETAILS):
 FEET INCHES
 FEET INCHES
 FEET INCHES

WELL FRACTURED (DETAILS):
 FEET INCHES
 FEET INCHES
 FEET INCHES

RESULT AFTER TREATMENT (Initial open flow or bbls.)
 ROCK PRESSURE AFTER TREATMENT: HOURS
 Fresh Water Feet Salt Water
 Producing Sand: Depth:

Formation	Color	Hard or Soft	Top	Bottom	Oil, Gas or Water	Depth	Remarks
Pittsburgh Coal			1040				
Little Dunkard			1415	1452			
Big Dunkard			1535	1600			
Salt Sand			1935	2072			
Red Cove			2115	2185			
Maxton Sand			2195	2232			
		T.D.		2235			
		5-3/16" liner	2015'	to 2195'			



STATE OF WEST VIRGINIA

AFFIDAVIT

STATE OF WEST VIRGINIA

County of Wayne

being first duly sworn according to law do depose and say that they are experienced in the plugging and filling of oil and gas wells and were employed by well operator and participated in the work of plugging and filling the above well, that said well was completed on the 8 day of May 1966, and that the well was plugged and filled in the following manner:

DEPTH OR OTHER DESIGNATION	PLUGGING MATERIAL	PLUGGING METHOD	DATE
Surface	1/2" Gravel	5' to 10'	1959
10' to 20'	2" Gravel	5' to 10'	1959
20' to 30'	3" Gravel	5' to 10'	1959
30' to 40'	4" Gravel	5' to 10'	1959
40' to 50'	5" Gravel	5' to 10'	1959
50' to 60'	6" Gravel	5' to 10'	1959
60' to 70'	7" Gravel	5' to 10'	1959
70' to 80'	8" Gravel	5' to 10'	1959
80' to 90'	9" Gravel	5' to 10'	1959
90' to 100'	10" Gravel	5' to 10'	1959
100' to 110'	11" Gravel	5' to 10'	1959
110' to 120'	12" Gravel	5' to 10'	1959
120' to 130'	13" Gravel	5' to 10'	1959
130' to 140'	14" Gravel	5' to 10'	1959
140' to 150'	15" Gravel	5' to 10'	1959
150' to 160'	16" Gravel	5' to 10'	1959
160' to 170'	17" Gravel	5' to 10'	1959
170' to 180'	18" Gravel	5' to 10'	1959
180' to 190'	19" Gravel	5' to 10'	1959
190' to 200'	20" Gravel	5' to 10'	1959
200' to 210'	21" Gravel	5' to 10'	1959
210' to 220'	22" Gravel	5' to 10'	1959
220' to 230'	23" Gravel	5' to 10'	1959
230' to 240'	24" Gravel	5' to 10'	1959
240' to 250'	25" Gravel	5' to 10'	1959
250' to 260'	26" Gravel	5' to 10'	1959
260' to 270'	27" Gravel	5' to 10'	1959
270' to 280'	28" Gravel	5' to 10'	1959
280' to 290'	29" Gravel	5' to 10'	1959
290' to 300'	30" Gravel	5' to 10'	1959
300' to 310'	31" Gravel	5' to 10'	1959
310' to 320'	32" Gravel	5' to 10'	1959
320' to 330'	33" Gravel	5' to 10'	1959
330' to 340'	34" Gravel	5' to 10'	1959
340' to 350'	35" Gravel	5' to 10'	1959
350' to 360'	36" Gravel	5' to 10'	1959
360' to 370'	37" Gravel	5' to 10'	1959
370' to 380'	38" Gravel	5' to 10'	1959
380' to 390'	39" Gravel	5' to 10'	1959
390' to 400'	40" Gravel	5' to 10'	1959
400' to 410'	41" Gravel	5' to 10'	1959
410' to 420'	42" Gravel	5' to 10'	1959
420' to 430'	43" Gravel	5' to 10'	1959
430' to 440'	44" Gravel	5' to 10'	1959
440' to 450'	45" Gravel	5' to 10'	1959
450' to 460'	46" Gravel	5' to 10'	1959
460' to 470'	47" Gravel	5' to 10'	1959
470' to 480'	48" Gravel	5' to 10'	1959
480' to 490'	49" Gravel	5' to 10'	1959
490' to 500'	50" Gravel	5' to 10'	1959
500' to 510'	51" Gravel	5' to 10'	1959
510' to 520'	52" Gravel	5' to 10'	1959
520' to 530'	53" Gravel	5' to 10'	1959
530' to 540'	54" Gravel	5' to 10'	1959
540' to 550'	55" Gravel	5' to 10'	1959
550' to 560'	56" Gravel	5' to 10'	1959
560' to 570'	57" Gravel	5' to 10'	1959
570' to 580'	58" Gravel	5' to 10'	1959
580' to 590'	59" Gravel	5' to 10'	1959
590' to 600'	60" Gravel	5' to 10'	1959
600' to 610'	61" Gravel	5' to 10'	1959
610' to 620'	62" Gravel	5' to 10'	1959
620' to 630'	63" Gravel	5' to 10'	1959
630' to 640'	64" Gravel	5' to 10'	1959
640' to 650'	65" Gravel	5' to 10'	1959
650' to 660'	66" Gravel	5' to 10'	1959
660' to 670'	67" Gravel	5' to 10'	1959
670' to 680'	68" Gravel	5' to 10'	1959
680' to 690'	69" Gravel	5' to 10'	1959
690' to 700'	70" Gravel	5' to 10'	1959
700' to 710'	71" Gravel	5' to 10'	1959
710' to 720'	72" Gravel	5' to 10'	1959
720' to 730'	73" Gravel	5' to 10'	1959
730' to 740'	74" Gravel	5' to 10'	1959
740' to 750'	75" Gravel	5' to 10'	1959
750' to 760'	76" Gravel	5' to 10'	1959
760' to 770'	77" Gravel	5' to 10'	1959
770' to 780'	78" Gravel	5' to 10'	1959
780' to 790'	79" Gravel	5' to 10'	1959
790' to 800'	80" Gravel	5' to 10'	1959
800' to 810'	81" Gravel	5' to 10'	1959
810' to 820'	82" Gravel	5' to 10'	1959
820' to 830'	83" Gravel	5' to 10'	1959
830' to 840'	84" Gravel	5' to 10'	1959
840' to 850'	85" Gravel	5' to 10'	1959
850' to 860'	86" Gravel	5' to 10'	1959
860' to 870'	87" Gravel	5' to 10'	1959
870' to 880'	88" Gravel	5' to 10'	1959
880' to 890'	89" Gravel	5' to 10'	1959
890' to 900'	90" Gravel	5' to 10'	1959
900' to 910'	91" Gravel	5' to 10'	1959
910' to 920'	92" Gravel	5' to 10'	1959
920' to 930'	93" Gravel	5' to 10'	1959
930' to 940'	94" Gravel	5' to 10'	1959
940' to 950'	95" Gravel	5' to 10'	1959
950' to 960'	96" Gravel	5' to 10'	1959
960' to 970'	97" Gravel	5' to 10'	1959
970' to 980'	98" Gravel	5' to 10'	1959
980' to 990'	99" Gravel	5' to 10'	1959
990' to 1000'	100" Gravel	5' to 10'	1959

and that the work of plugging and filling said well was completed on the 8 day of May 1966.

And further deponent saith not.

Sworn to and subscribed before me this 13 day of May 1966.

My commission expires 12/31/66

Notary Public: Donald Wilson