

39° 32' 30"

Latitude

80° 42' 30"

Longitude

+

1675
.81w

Topo Location

7.5' Loc. _____ 15' Loc. _____
_____ (calc.) _____

Company Consolidated Gas Supply Corp

Farm WO MYERS # 4485

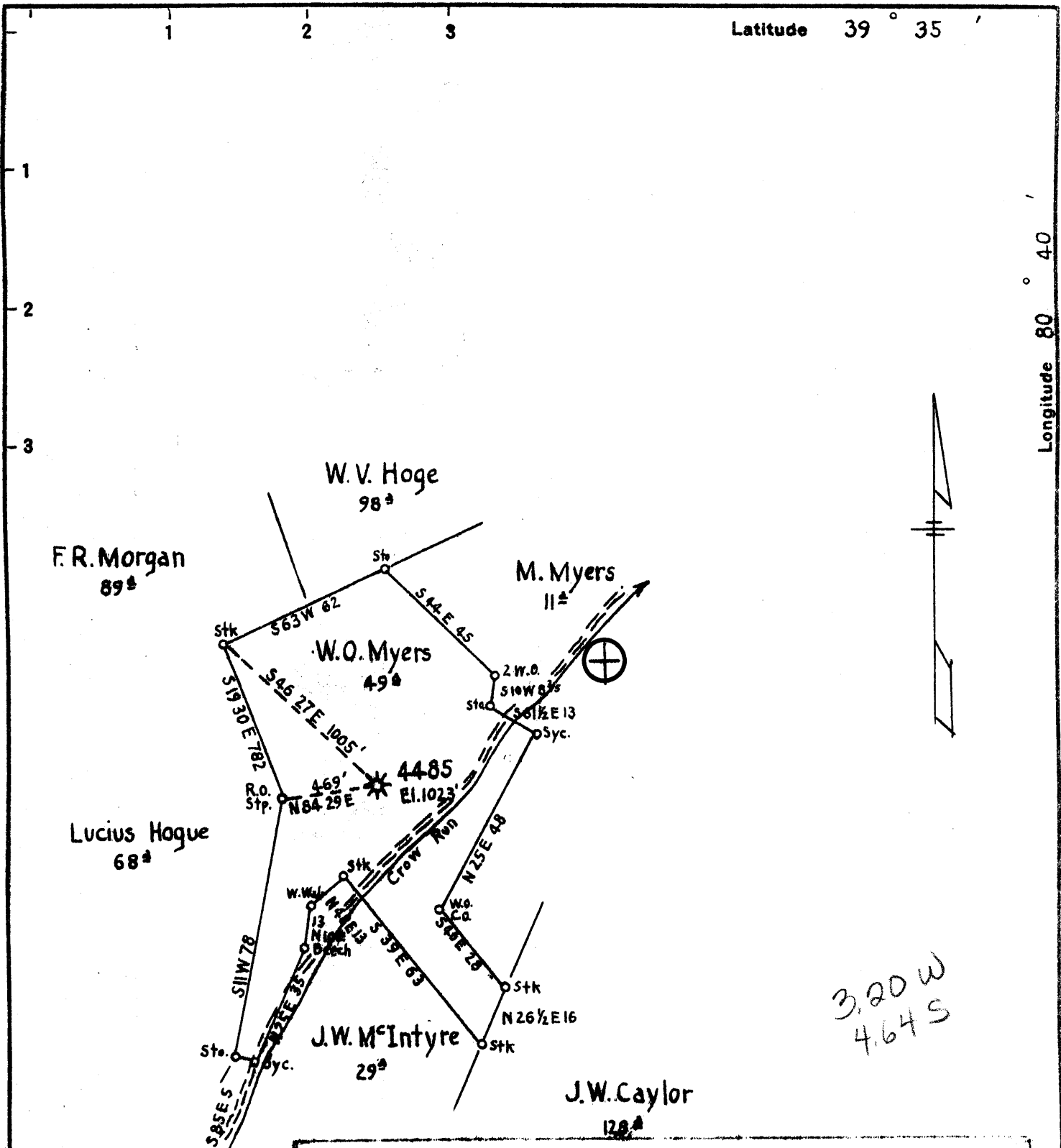
15' Quad _____
(sec.)

7.5' Quad PINE GROVE

District GREEN

WELL LOCATION PLAT

County 103 **Permit** 31248



3.20 W
4.64 S

Minimum Error of Closure 1' IN 200'
 Source of Elevation C.G.S.C. WELL # 5565 ELEV- 809'
 I, the undersigned, hereby certify that this map is correct to the best of my knowledge and belief and shows all the information required by paragraph 6 of the state regulation of the oil and gas section of the mining laws of West Virginia.

New Location
 Drill Deeper
 Abandonment *ISSUED 6-24-74*

Map 46 N6 W6 FB 1005 P34

Company CONSOLIDATED GAS SUPPLY CORP.
 Address CLARKSBURG, W. VA.
 Farm W.O. MYERS
 Tract _____ Acres 49 Lease No. 23558
 Well (Farm) No. _____ Serial No. 4485
 Elevation (Spirit Level) 1023
 Quadrangle LITTLETON SW
 County WETZEL District GREEN
 Engineer Jackson M. Jarvis
 Engineer's Registration No. 2397
 File No. _____ Drawing No. _____
 Date 14 June 51 Scale 1" = 40'

STATE OF WEST VIRGINIA
 DEPARTMENT OF MINES
 OIL AND GAS DIVISION
 CHARLESTON

WELL LOCATION MAP
 FILE NO. Wet-124B-A

+ Denotes location of well on United States Topographic Maps, scale 1 to 62,500, latitude and longitude lines being represented by border lines as shown.

- Denotes one inch spaces on border line of original tracing.

47-103 AUG 2 1974

