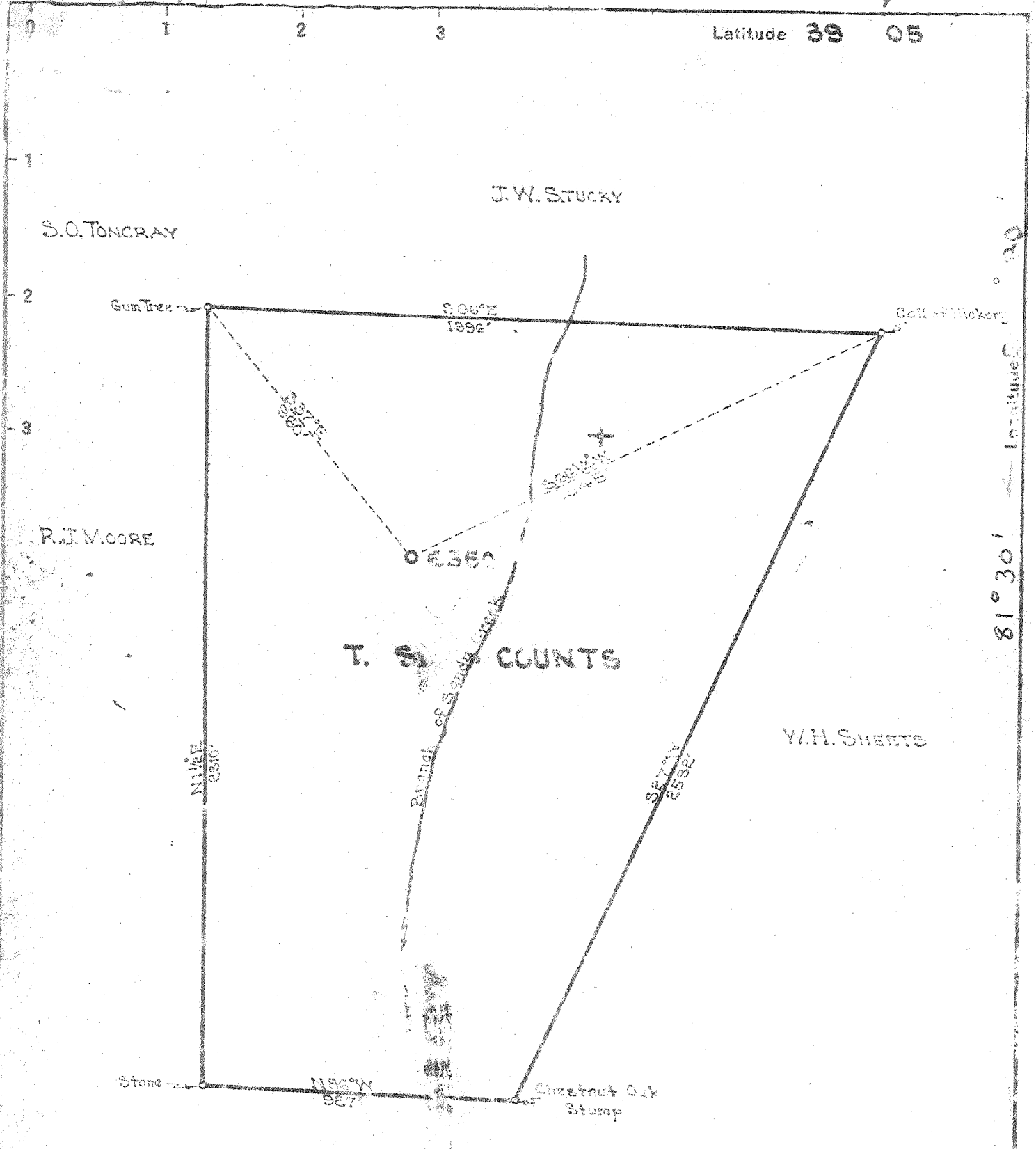


LFM

P



Latitude 39° 05' 30"

315-S5 39° 05'  
 3.19 W of 81° 30'  
 3.10 W of 81° 30'  
 7 WC (G-5)

New Location   
 Drill Deeper   
 Abandonment

Company UNITED FUEL GAS CO.  
 Address CHARLESTON, WVA  
 Farm T.S. COUNTS  
 Tract \_\_\_\_\_ Acres 78 Lease No. 44288  
 Well (Farm) No. \_\_\_\_\_ Serial No. 6550  
 Elevation (Spirit Level) 245.28  
 Quadrangle BELLEVILLE -5E  
 County WIRT District TUCKER  
 Engineer R.H. Moore  
 Engineer's Registration No. 662  
 File No. G4-105 Drawing No. \_\_\_\_\_  
 Date 12-8-42 Scale 1"=400'

STATE OF WEST VIRGINIA  
 DEPARTMENT OF MINES  
 OIL AND GAS DIVISION  
 CHARLESTON

WELL LOCATION MAP  
 FILE NO. WIRT-283

203

+ Denotes location of well on United States Topographic Maps, scale 1 to 62,500, latitude and longitude lines being represented by border lines as shown.  
 - Denotes one inch spaces on border line of original tracing.

Strata 14-A (5134-65; 5237-92) 5-0-279 Deep Well



(D)  
T. S. COUNTS NO. 8-6550 WELL

Tucker District, Mirt County, W. Va.

By United Fuel Gas Company, Charleston, W. Va.

Drilled under permit No. 787

On *Traces, SE Bellville Road*

Elevation 945.28' L.

Drilling commenced 12/14/49; completed 3/17/50.

Water 860' 6 bailers; 1710', 4 bailers per hr.; 1990' hole full, 1500' water in hole at 5288'.

Oriskany gas show 5280'.

13 3/8" casing, 48', 932' 6"; 10 3/4", 40.5', 1380' 4"; 8 5/8", 28', 2303'; 7", 23', 5167'.

Dry hole, plugged and abandoned.

Record from U.F. Gas Co., to HCT, Feb. 11, 1960

	Top.	Bottom.
Red rock	0	10
Sand	10	18
Red rock	18	70
White slate	70	90
Red rock	90	125
Sand	125	145
Red rock	145	215
Sand	215	235
Red rock	235	265
Sand	265	275
Red rock	275	315
White slate	315	325
Red rock	352	350
White slate	350	365
Red rock	365	405
Slate	405	438
Sand	438	450
Red rock	450	490
White slate	490	500
Red rock	500	510
Blue slate	510	550
Red rock	550	595
Slate	595	625
Red rock	625	633
Slate	633	643
Red rock	643	672
Hard sand	672	695
Red rock	695	720
Slate and shells	720	780
Red rock	780	785
Slate	785	805
Red rock	805	820
Slate	820	840
Sand	840	900
White slate	900	920
Red rock	920	925
Slate	925	1000
Red rock	1000	1140
Blue slate	1140	1172
Red rock	1172	1238
Lime shells	1238	1265
Red rock	1265	1285
Blue slate	1285	1317

	Top.	Bottom.
Red rock	1317	1328
Slate	1328	1345
Sand	1345	1375
Blue slate	1385	1400
Sand	1400	1430
Slate	1430	1508
Sand	1508	1585
Slate	1585	1680
Sand	1680	1767
Black slate	1767	1855
Dark lime	1855	1875
Black slate	1875	1890
Maxon Sand	1890	2126
Slate	2126	2145
Lime	2145	2167
Slate	2167	2172
Broken lime	2172	2195
Big Lime	2195	2245
Injun, broken	2245	2285
Slate	2285	2295
Lime	2295	2310
Slate and shells	2310	2510
Brown shale - <i>Coffee Shale</i>	2510	2534
Seren	2534	2540
Slate and shells	2540	3755
Brown shale	3755	3844
White slate	3844	4210
Brown shale	4210	4420
White	4420	4810
Brown shale	4810	5138
Corniferous	5138	5272
Oriskany sand	5272	5288
TOTAL DEPTH		5288

475