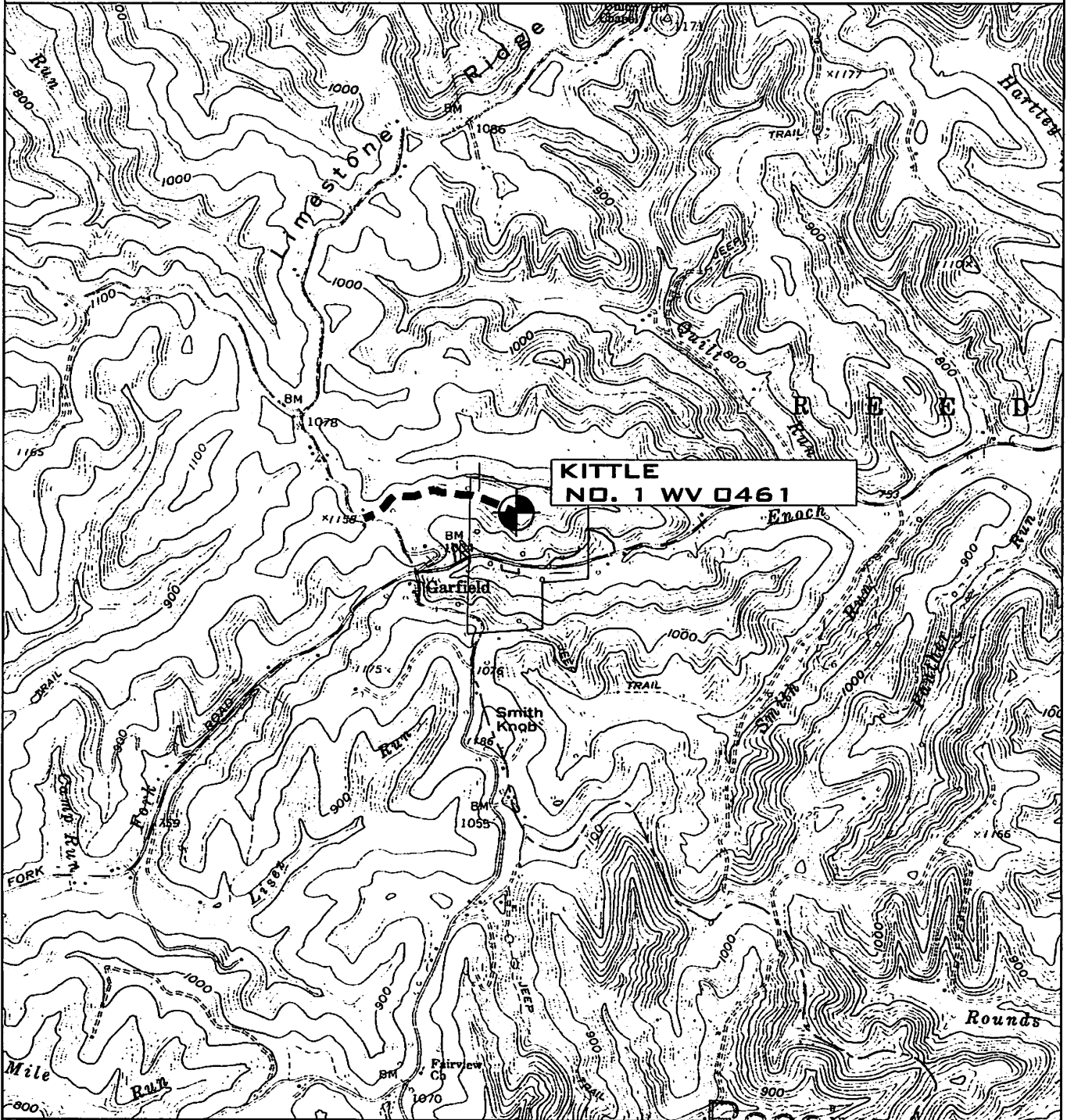


WW9

KITTLE #1 WV 0461

PAGE OF



Received

ANGLE RIGHT LAND SURVEYING, LLC PO BOX 681 GRANTSVILLE, WV 26147 (304) 354-0085 130602	OPERATOR MOUNTAIN V OIL & GAS, INC. P.O. BOX 470 BRIDGEPORT, WV 26330	TOPO SECTION LIVERPOOL 7.5 13	WELL NAME KITTLE #1 WV 0461
	SCALE 1"=2000'	DATE 08/01/2013	