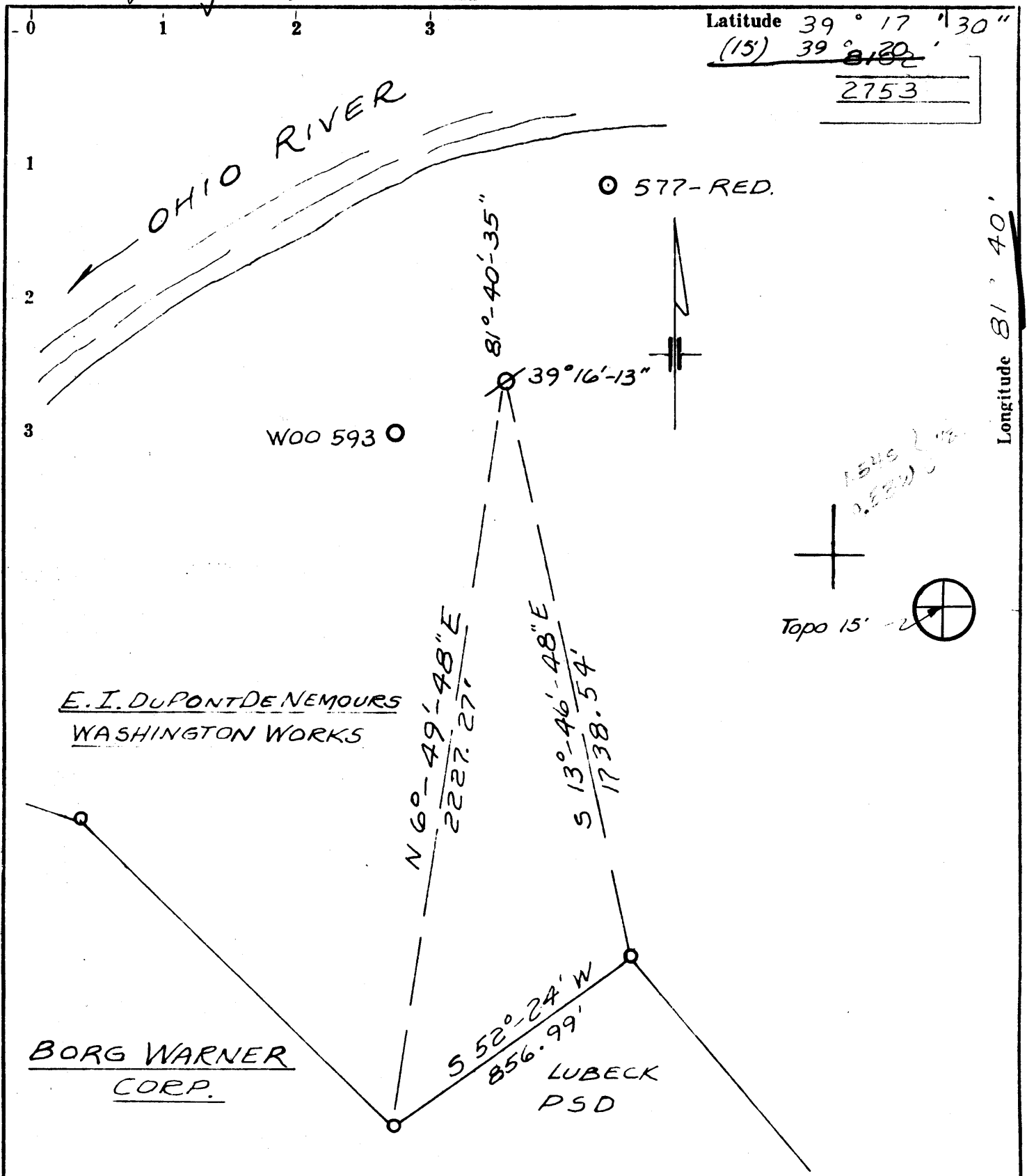


Latitude 39° 17' 30"
 (15) 39° 18' 20"
 2753



Longitude 81° 40'

E.I. DUPONT DE NEMOURS
WASHINGTON WORKS

BORG WARNER
CORP.

LUBECK
 PSD

- Fracture
- Redrill
- New Location
- Drill Deeper
- Abandonment 1/5/76

Source of Elevation MON. DUPONT ELV. 630.10 N 4375.0 E 3600
 I, the undersigned, hereby certify that this map is correct to the best of my knowledge and belief and shows all the information required by paragraph 6 of the rules and regulations of the oil and gas section of the mining laws of West Virginia.

Minimum accuracy, one part in

Company	E.I. DUPONT DE NEMOURS	
Address	PARKERSBURG, W. VA.	
Farm	WASHINGTON WORKS	
Tract	Acres 400	Lease No.
Well (Farm) No.	2	Serial No. SW
Elevation (Spirit Level)	625.00' Parkersburg 15'	
Quadrangle	LITTLE HOCKING, OHIO-W. VA.	
County	WOOD	District LUBECK
Engineer	R. D. Windall, Jr.	
Engineer's Registration No.	W. VA. 2722	
File No.	Drawing No. WWM-274	
Date	OCT. 7, 1975 Scale 1" = 400'	

STATE OF WEST VIRGINIA
 DEPARTMENT OF MINES
 OIL AND GAS DIVISION
 CHARLESTON

WELL LOCATION MAP
 FILE NO. WOO-724-P

+ Denotes location of well on United States Topographic Maps, scale 1 to 24,000, latitude and longitude lines being represented by border lines as shown.

- Denotes one inch spaces on border line of original tracing.

47-107 JAN 16 1976

Plugged 2-24-76, Completed 7-2-70, Disposal well, TD 1677' (from 1976 DEP STAFFS)