

1180'

Plot Card CSD

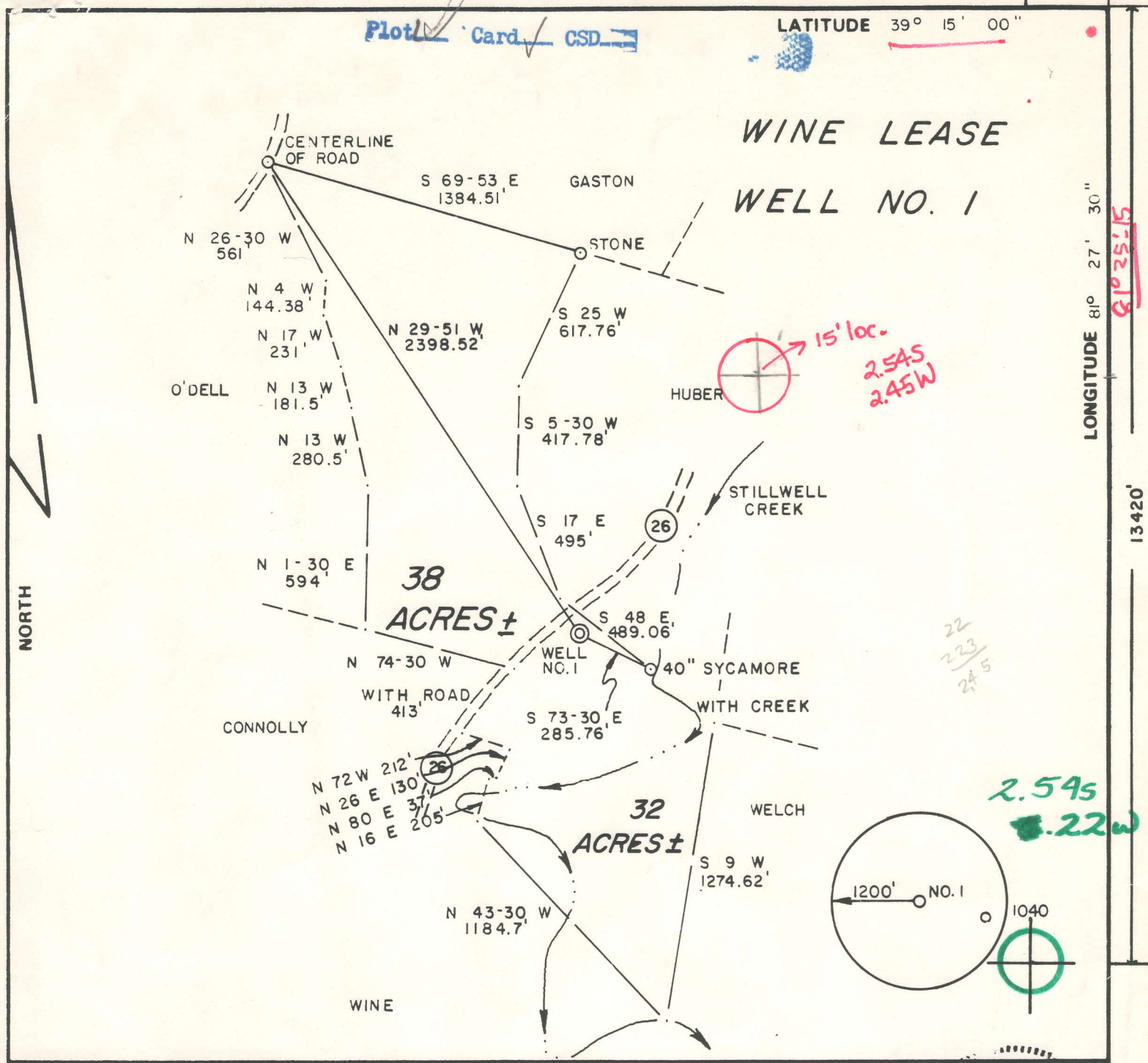
LATITUDE 39° 15' 00"

WINE LEASE WELL NO. 1

LONGITUDE 81° 27' 30"

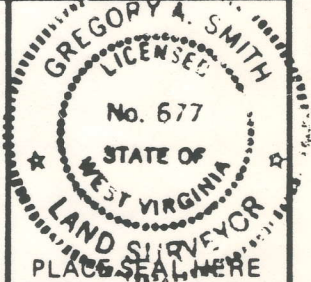
81° 25' 15"

13420'



FILE NO. 10 - 11
 DRAWING NO. _____
 SCALE 1" = 600'
 MINIMUM DEGREE OF ACCURACY 1 / 200
 PROVEN SOURCE OF ELEVATION WESTFALL NO. 1
ELEV. 784'

I THE UNDERSIGNED, HEREBY CERTIFY THAT THIS PLAT IS CORRECT TO THE BEST OF MY KNOWLEDGE AND BELIEF AND SHOWS ALL THE INFORMATION REQUIRED BY LAW AND THE REGULATIONS ISSUED AND PRESCRIBED BY THE DEPARTMENT OF MINES.
 (SIGNED) Gregory A. Smith
 R.P.E. _____ L.L.S. 677



(+) DENOTES LOCATION OF WELL ON UNITED STATES TOPOGRAPHIC MAPS
 FORM IV-6 (8-78)



DATE DECEMBER 30, 1982
 OPERATOR'S WELL NO. 1
 API WELL NO. _____
47 - 107 - 1243
 STATE COUNTY PERMIT

STATE OF WEST VIRGINIA
 DEPARTMENT OF MINES
 OIL AND GAS DIVISION

WELL TYPE: OIL GAS LIQUID INJECTION WASTE DISPOSAL
 (IF "GAS,") PRODUCTION STORAGE DEEP SHALLOW
 LOCATION: ELEVATION 598' WATER SHED STILLWELL CREEK
 DISTRICT CLAY COUNTY WOOD
 QUADRANGLE KANAWHA 7.5' Elizabeth 15' NW
 SURFACE OWNER RONALD L. WINE et. ux. ACREAGE 38
 OIL & GAS ROYALTY OWNER RONALD L. WINE et. ux. LEASE ACREAGE 38
 LEASE NO. _____

PROPOSED WORK: DRILL CONVERT DRILL DEEPER REDRILL FRACTURE OR STIMULATE PLUG OFF OLD FORMATION PERFORATE NEW FORMATION OTHER PHYSICAL CHANGE IN WELL (SPECIFY) _____
 PLUG AND ABANDON CLEAN OUT AND REPLUG
 TARGET FORMATION MARCELLUS ESTIMATED DEPTH 4800'
 WELL OPERATOR APPCO OIL & GAS CORP. DESIGNATED AGENT RICHARD H. BRUMBAUGH
 ADDRESS 100 S. ORANGE ST. SUITE 909 ADDRESS 212 COURT ST.
ORLANDO, FL. 32807 SPENCER, W. V. 25276

FEB 14 1983

2590 (161) E.F. managed (a) aff. to 107 12 38



IV-35
(Rev 8-81)

Date April 18, 1983

Operator's

Well No. 1

State of West Virginia

Farm R. Wine

Department of Mines

Oil and Gas Division

API No. 47 - 107 - 1243

WELL OPERATOR'S REPORT

OF

DRILLING, FRACTURING AND/OR STIMULATING, OR PHYSICAL CHANGE

WELL TYPE: Oil x / Gas x / Liquid Injection / Waste Disposal /
(If "Gas," Production / Underground Storage / Deep / Shallow /)

LOCATION: Elevation: 609 K.B. Watershed Stillwell Creek

District: Clay County Wood Quadrangle Kanawha 7.5 min.

COMPANY Appco Oil and Gas Corporation

ADDRESS 100 S. Orange Ave., S-909, Orlando, Fla

DESIGNATED AGENT Richard Brumbaugh

ADDRESS 212 Court St. Spencer, WV 25276

SURFACE OWNER Ronald Wine

ADDRESS Stillwell Road, Parkersburg, WV 26102

MINERAL RIGHTS OWNER Ronald Wine

ADDRESS Stillwell Road, Parkersburg, WV 26102

OIL AND GAS INSPECTOR FOR THIS WORK

Sameul Hersman ADDRESS P.O. Box 66, Smithville,

PERMIT ISSUED 1/24/83 WV 26178

DRILLING COMMENCED 2/15/83

DRILLING COMPLETED 2/19/83

IF APPLICABLE: PLUGGING OF DRY HOLE ON
CONTINUOUS PROGRESSION FROM DRILLING OR
REWORKING. VERBAL PERMISSION OBTAINED
ON n/a

Casing Tubing	Used in Drilling	Left in Well	Cement fill up Cu. ft.
Size 20-16 Cond.			
13-10"	189'	189'	to surface
9 5/8			
8 5/8	1770'	1770'	60 ft ³ =105' fill
7			
5 1/2			
4 1/2	4725'	4725'	650 ft ³ = 2850' fi
3			
2			
Liners used			

GEOLOGICAL TARGET FORMATION Marcellus Shale Depth 4800' feet

Depth of completed well 4765' feet Rotary x / Cable Tools

Water strata depth: Fresh n/a feet; Salt n/a feet

Coal seam depths: n/a Is coal being mined in the area? no

OPEN FLOW DATA

Producing formation Olentangy Shale Pay zone depth 4416'-4653' feet

Gas: Initial open flow 250 Mcf/d Oil: Initial open flow Bbl/d

Final open flow 75 Mcf/d Final open flow Bbl/d

Time of open flow between initial and final tests 48 hours

Static rock pressure 1200 psig (surface measurement) after 24 hours shut in

(If applicable due to multiple completion--)

Second producing formation Pay zone depth feet

Gas: Initial open flow Mcf/d Oil: Initial open flow Bbl/d

Final open flow Mcf/d Oil: Final open flow Bbl/d

Time of open flow between initial and final tests hours

JAN 23 1984

DETAILS OF PERFORATED INTERVALS, FRACTURING OR STIMULATING, PHYSICAL CHANGE, ETC.

Perforations: (Olentangy Shale)
4418'-4653' 25 holes .39 o.d.

Stimulation: *Rhinestreet* → *Middlesex* → *Gravel*
Foam-Nitrogen Completion
with 30m lbs 20/40 mesh sand,
15m lbs 10/20 mesh sand,
224 bbls of fluid and
905 mscf of nitrogen
ISIP = 2300 psi 5 min shut-in 2150 psi

WELL LOG

FORMATION	COLOR	HARD OR SOFT	TOP FEET	BOTTOM FEET	REMARKS Including indication of all fresh and salt water, coal, oil and gas
Surface hole	Sand, Shale		surface	1790	
Not Logged!					
	siltstone & shale		1790	2008	
Sunbury (coffee) Shale			2008	2026	Slight show of gas, Berea sandstone absent
	siltstone & shale		2026	2340	
Gordon Stray			2340	2373	Very slight show of oil
	siltstone & shale		2373	3914	Oil fluorescence noted in samples from 3250'-3750'
Lower Huron Member (Ohio Shale)			3914	3949	Slight odor, slight oil, fluorescence noted in samples
	siltstone & shale		3949	4360	no shows
Olentangy Shale			4360	4660	Slight odor, fair oil fluorescence noted in samples
	siltstone & shale		4660	4713	
Marcellus Shale			4713	4724	No shows reported
					T. D. Logger 4724'
					T. D. Driller <u>4765'</u>
					*fill-up problems did not allow the <u>Onondaga limestone</u> to be logged.

base H 3944
J/A - 05 - 4112
base A

4418
2026
2392

(Attach separate sheets as necessary)

Appco Oil & Gas Corporation
Well Operator

By: Benjamin Amity - Geologist

Date: April 19, 1983

Note: Regulation 2.02(i) provides as follows:
"The term 'log' or 'well log' shall mean a systematic detailed geological record of all formations including..."

