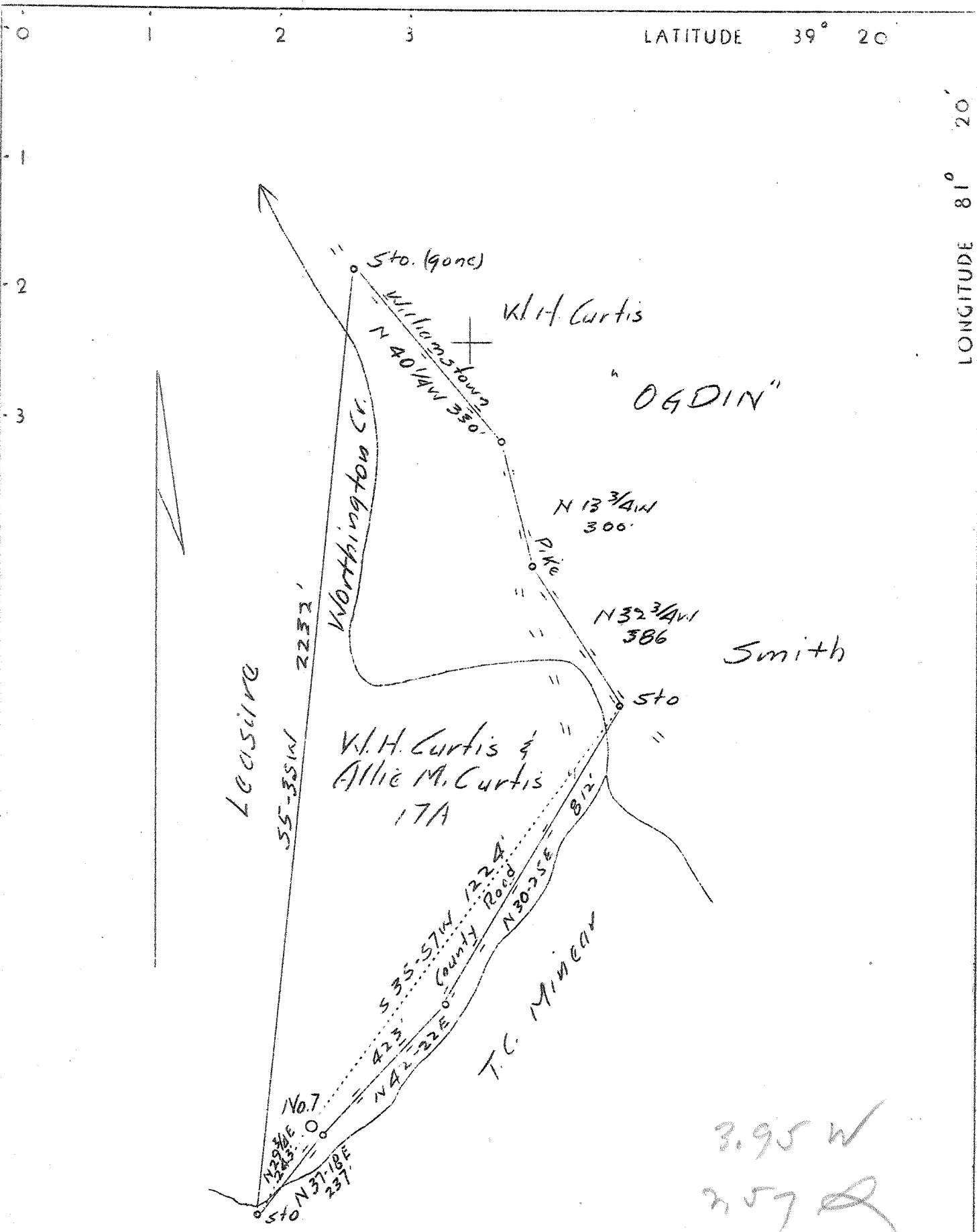


LATITUDE 39° 20'

LONGITUDE 81° 20'



Abandonment

3.95 W
257 R

Company J.C. Woodburn & Daughters
 Address c/o Warner Britton, Vienna, W. Va.
 Farm W.H. & Allie M. Curtise
 Tract 1 Acres 17 Lease No. _____
 Well (Farm) No. 1 Serial No. _____
 Elevation (Spirit Level) 674.7
 Quadrangle Maricotta
 County Wood District Union
 Engineer J.V. Dunbar
 Engineer's Registration No. 65
 File No. C.-23-L Drawing No. _____
 Date July 8, 1937 Scale 1"=300'

STATE OF WEST VIRGINIA
 Department of Mines
 OIL AND GAS DIVISION
 CHARLESTON

WELL LOCATION MAP
 File No. WOO-101A

+ Denotes location of well on United States Topographic Maps, scale 1 to 62,500, latitude and longitude lines being represented by border lines as shown.

— Denotes one inch spaces on border line of original tracing.