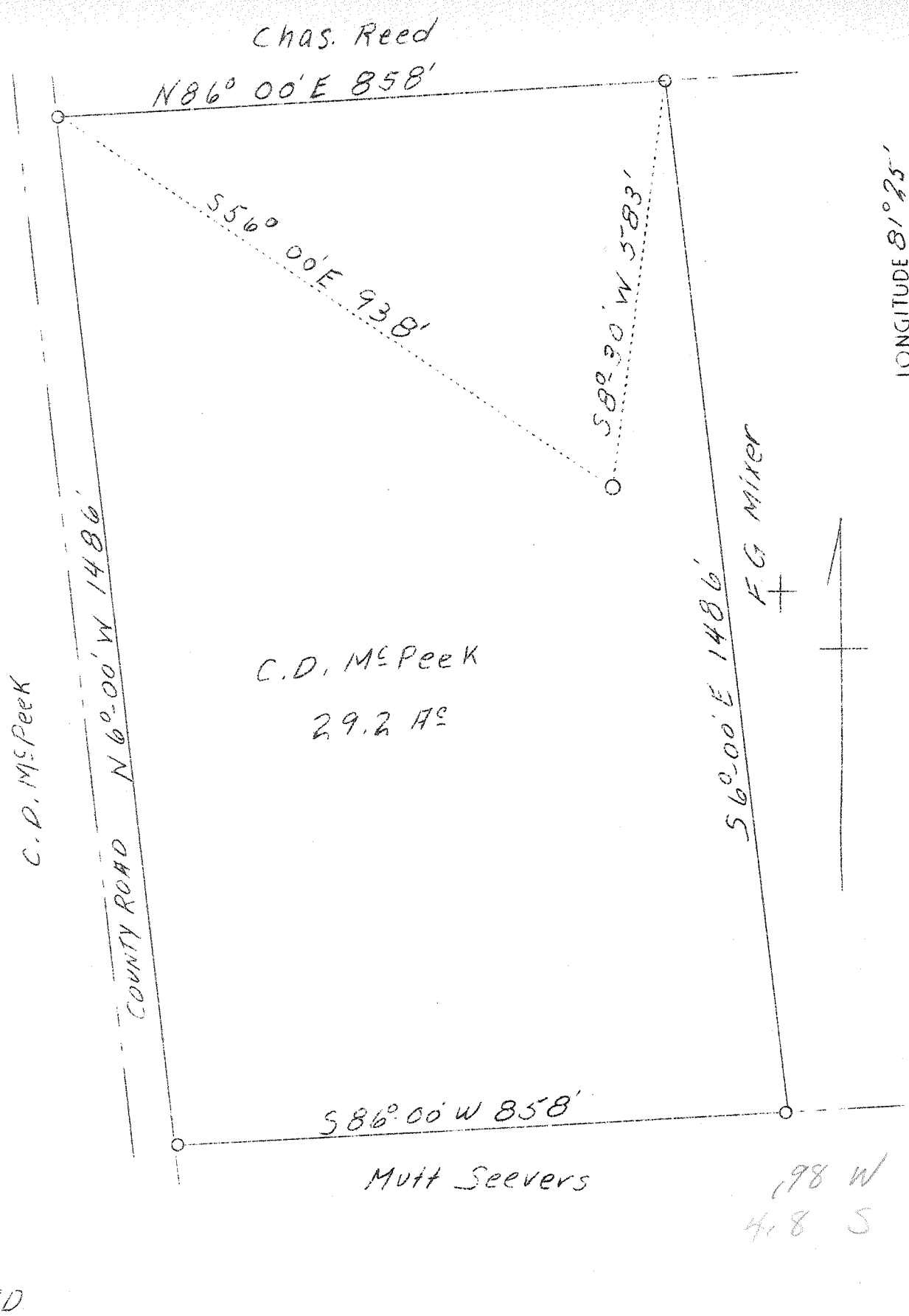


LATITUDE 39° 25'

LONGITUDE 81° 25'



Company	R. W. Porter
Address	R#4, Marietta, Ohio
Farm	C. D. McPeek
Acres	29.2
Well (Farm) No.	Cooper 1
Elevation (SL)	789
Quadrangle	Marietta
County	Wood
District	Williams
Engineer	George R. Clarke
Eng. Reg. No.	102
Date	March 6, 1939
Scale	1" - 200'

STATE OF WEST VIRGINIA
 Department of Mines
 OIL & GAS DIVISION
 Charleston

WELL LOCATION MAP

File No. Woo-131-A

x Denotes location of well on U. S. Topographic Maps, scale 1 to 62,500, latitude and longitude lines being represented by border lines as shown.

- Denotes one inch spaces on border line of original tracing.