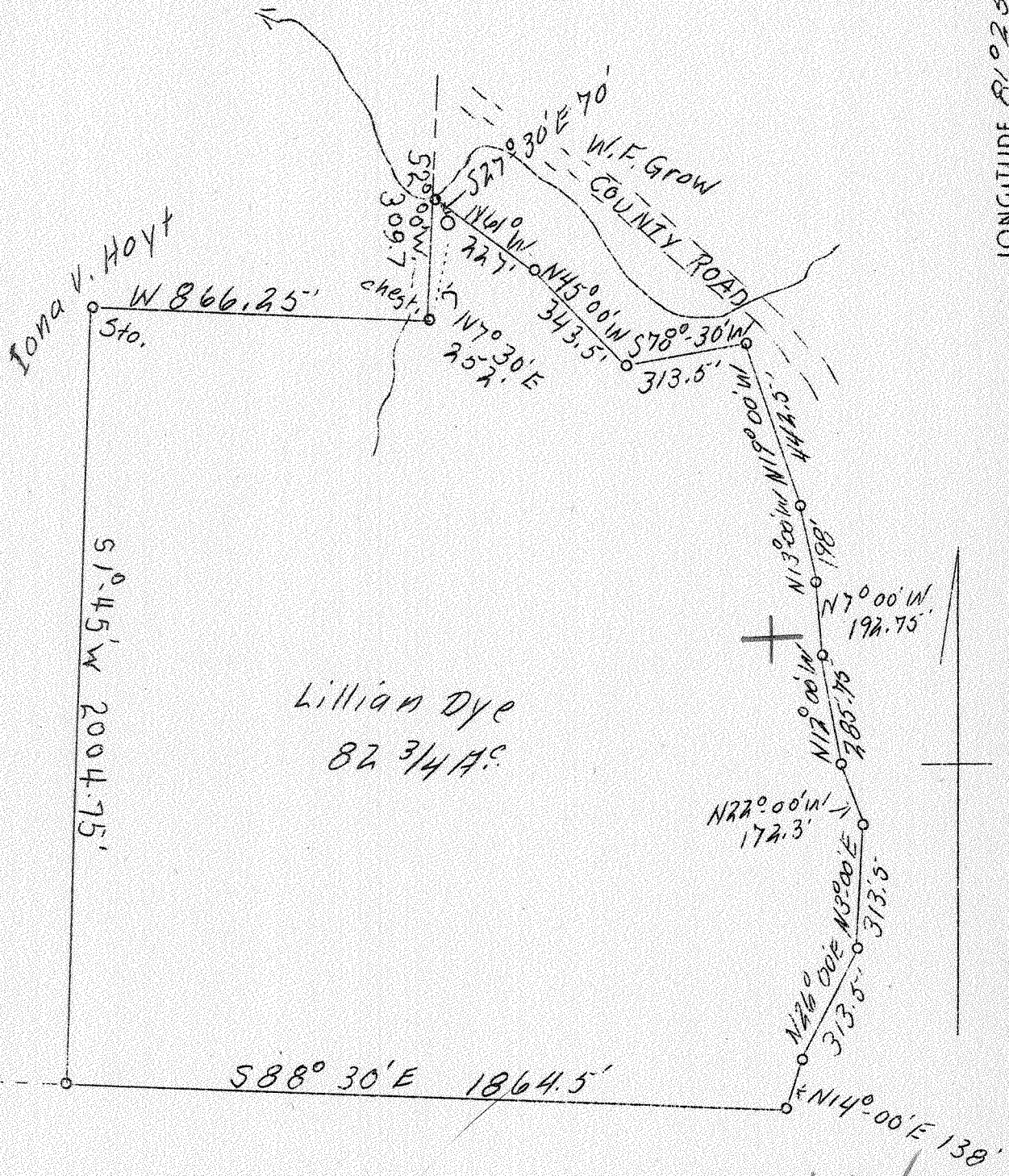


LATITUDE 39°25'

LONGITUDE 81°25'



ABD

✓ JUN 12 1939

1.6W
5.72

Company	Hoaglin Oil Co.
Address	Williamstown, W.Va.
Farm	Lillian Dye
Acres	82 3/4
El.(S.L.)	655'
Quadrangle	Marietta
County	Wood
District	Williams
Eng.	George R. Clarke
Eng. Reg. No.	102
Date	3/8/39
Scale	1" = 400'

WC

STATE OF WEST VIRGINIA
 Department of Mines
 OIL AND GAS DIVISION
 Charleston

WELL LOCATION MAP

File No. W00-132-A

x Denotes location of well on U.S. Topographic Maps, scale 1 to 62,500, latitude and longitude lines being represented by border lines as shown.

- Denotes one inch spaces on border line of original tracing.

