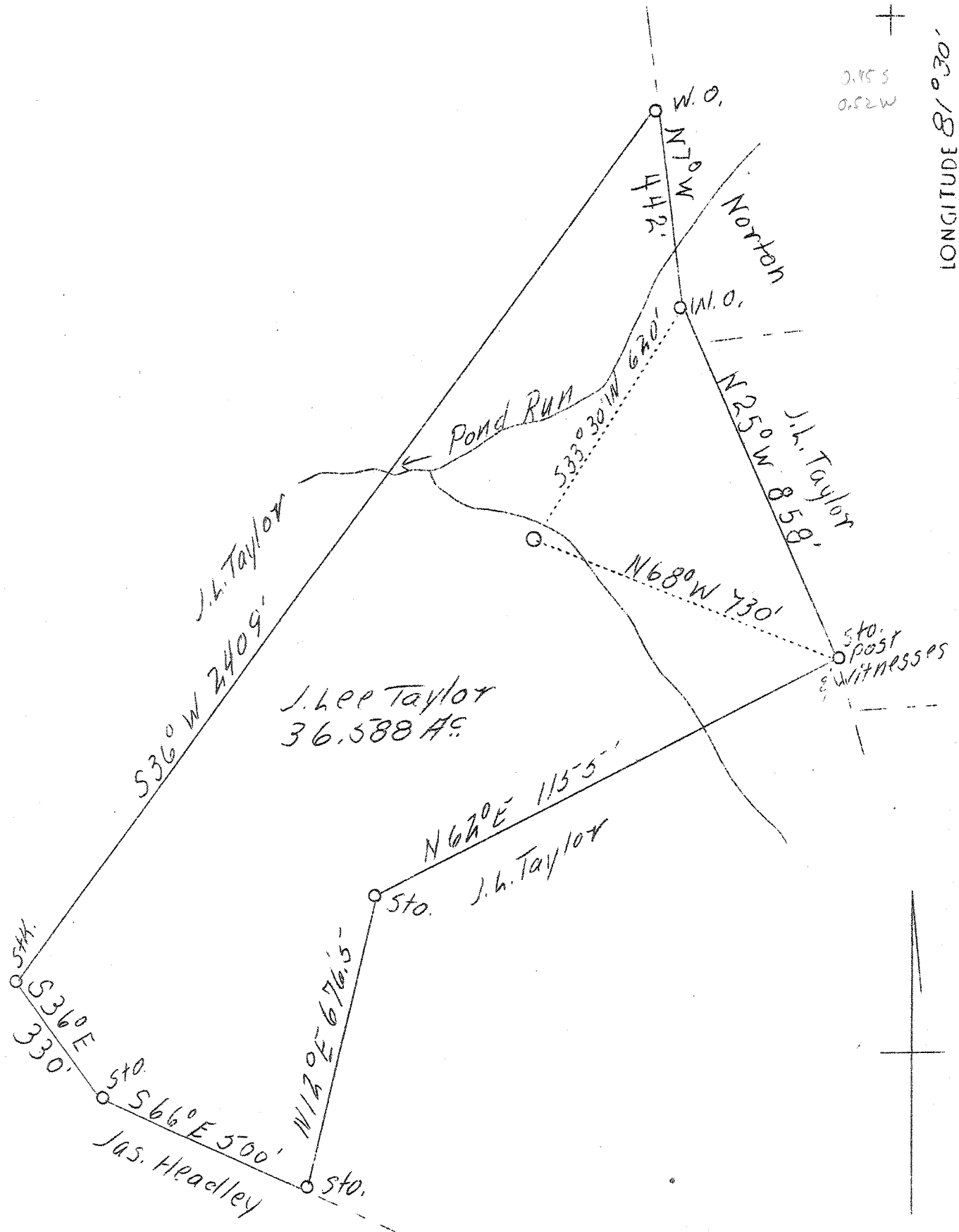


LATITUDE 39° 20'

LONGITUDE 81° 30'



ABD.

Company	D.R.Gronnlees	STATE OF WEST VIRGINIA
Address	780 1/2 Third St. Marietta, Ohio	Department of Mines OIL AND GAS DIVISION Charleston
Farm	J.Lee Taylor	
Acres	35.588	
Well(Farm)No.	2	WELL LOCATION MAP
El.(S.L.)	676'	File No. <u>W00-134-17</u>
Quadrangle	Parkersburg	
County	Wood	
District	Williams	
Eng.	George R. Clarke	x Denotes location of well on U.S. Topo- graphic Maps, scale 1 to 62,500, latitude and longitude lines being represented by border lines as shown.
Eng. Reg. No.	102	- Denotes one inch spaces on border lines of original tracing.
Date	5/18/39	
Scale	1" = 300'	