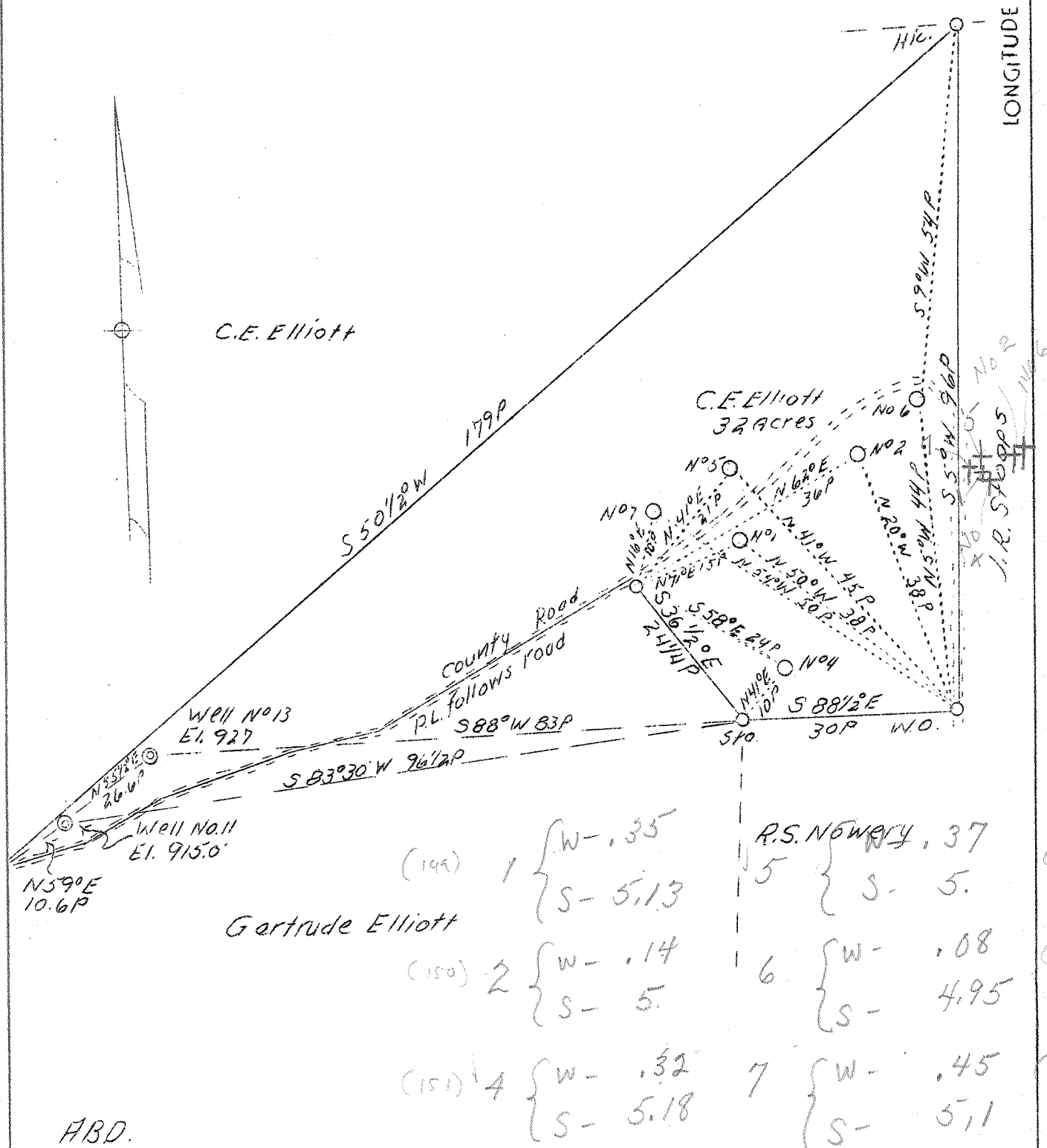


LATITUDE 39° 20'

LONGITUDE 81° 25'



Company C. T. Feick
 Address Walker, W. Va. (R-2)
 Farm C. E. Elliott
 Acres 32
 Well (Farm) No. 1-2-4-5-6-7
 Elevation (SL) 1-863 2-900 4-858
 5-896 6-910 7-893
 Quadrangle Marietta SW
 County Wood
 District Union
 Engineer J. E. Anderson
 Engineer's Reg. Surveyor
 Date August 20, 1938
 Scale 1" = 20 poles

STATE OF WEST VIRGINIA
 Department of Mines
 OIL & GAS DIVISION
 Charleston

WELL LOCATION MAP
 File No. 149-154-A
 #1 thru #7

x Denotes location of well on U. S. Topographic Maps, scale 1 to 62,500, latitude and longitude lines being represented by border lines as shown.

- Denotes one inch spaces on border line of original tracing.

ABD.