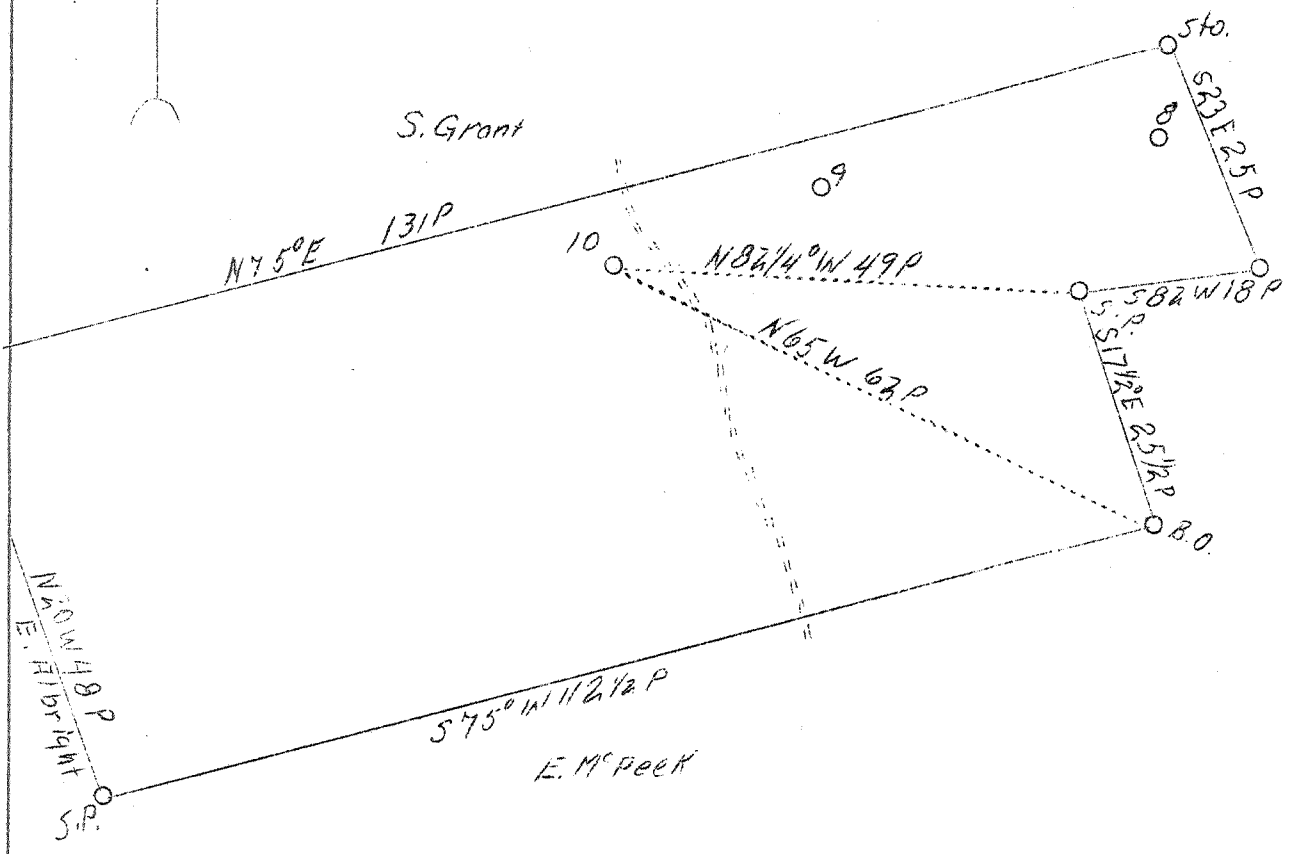
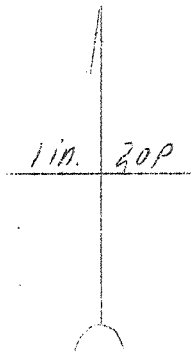


LATITUDE 39° 15'

LONGITUDE 81° 20'



S-1.5B  
W-0.29

ABD.

<p>Company Address Farm Acres Well (Farm) No. Elevation (SL) Quadrangle NW County District Engineer Eng. Reg. No. Date Scale</p>	<p>Congdon &amp; Woodyard Parkersburg, W. Va. Elgie Grant 36 10 881.7 Elizabeth Wood Walker O. Meredith Surveyor July 18, 1939 1" - 20 poles</p>	<p>STATE OF WEST VIRGINIA Department of Mines OIL &amp; GAS DIVISION Charleston</p>	<p>WELL LOCATION MAP File No. <u>W00-155-A</u></p>
		<p>x Denotes location of well on U. S. Topographic Maps, scale 1 to 62,500, latitude and longitude lines being represented by border lines as shown.  - Denotes one inch spaces on border line of original tracing.</p>	