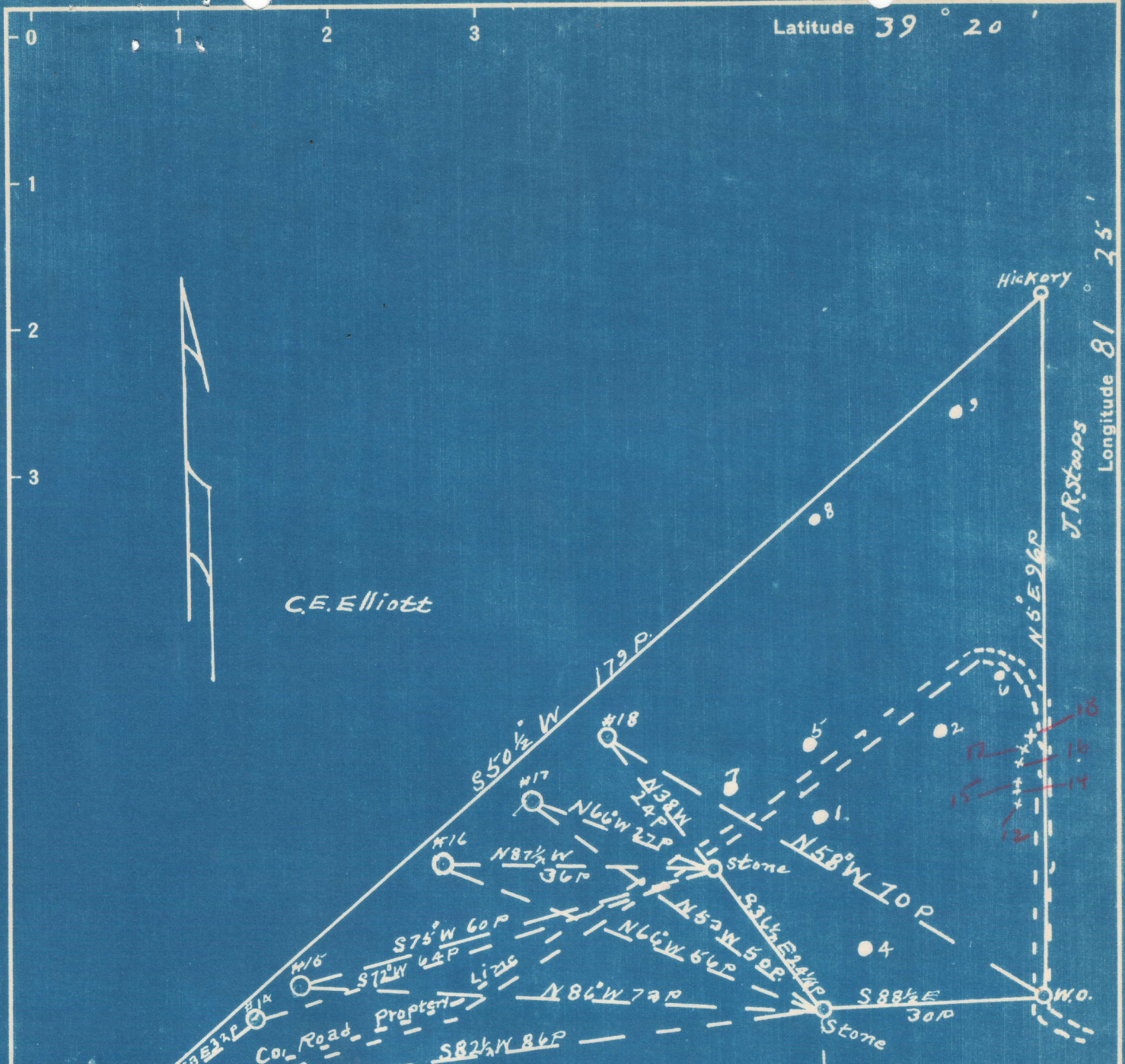


Latitude 39 20

Longitude 81 25



C.E. Elliott

J.R. Steaps

R.S. Nowery

Handwritten notes and well identifiers:

- #164-A
- E 165-A
- #166-A
- Gertrude Elliott
- #12
- #14
- #16A
- #161A

- New Location
- Drill Deeper
- Abandonment

|     |        |       |     |        |
|-----|--------|-------|-----|--------|
| #15 | 5.30 S | #166A | #15 | 0.69 W |
| #16 | 5.18 S | #162A | #16 | 0.68 W |
| #17 | 5.08 S | #163A | #17 | 0.65 W |
| #18 | 4.99 S | #161A | #18 | 0.60 W |
| #12 | 5.46 S | #164A |     |        |
| #14 | 0.70 W | #165A |     |        |

Company C.T. Feick  
 Address Walker W.Va. R. 2  
 Farm C.E. Elliott  
 Tract \_\_\_\_\_ Acres 32 Lease No. \_\_\_\_\_  
 Well (Farm) No. 12-14-16-18 Serial No. \_\_\_\_\_  
 Elevation (Spirit Level) 12-14-15-16-17-18  
916-929-936-900-891-845  
 Quadrangle Marietta  
 County Wood District Union  
 Engineer J.E. Anderson  
 Engineer's Registration No. County Surveyor  
 File No. \_\_\_\_\_ Drawing No. \_\_\_\_\_  
 Date Aug. 20, 1938 Scale 1 in = 20 poles

STATE OF WEST VIRGINIA  
 DEPARTMENT OF MINES  
 OIL AND GAS DIVISION  
 CHARLESTON

**WELL LOCATION MAP**  
 FILE NO. W00-162 & 163-A

+ Denotes location of well on United States Topographic Maps, scale 1 to 62,500, latitude and longitude lines being represented by border lines as shown.

- Denotes one inch spaces on border line of original tracing.

STATE OF WEST VIRGINIA  
DEPARTMENT OF MINES  
OIL AND GAS DIVISION

WELL RECORD

164  
oil

Permit No. none Oil or Gas Well (Kind) \_\_\_\_\_

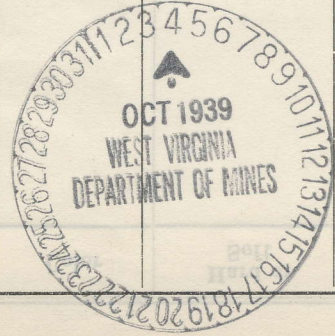
Company C. T. Feick  
Address Walker, Rt. #2, W. VA.  
Farm C. E. Elliott Acres 32  
Location (waters) Laurel Fork  
Well No. 17 Elev. 851  
District Union County Wood  
The surface of tract is owned in fee by C. E. Elliott  
Address Parkersburg, R. D.  
Mineral rights are owned by C. T. Smith & C. E. Elliott  
Address Parkersburg, R.  
Drilling commenced more than 20 years ago  
Drilling completed no data  
Date shot \_\_\_\_\_ Depth of shot \_\_\_\_\_  
Open Flow /10ths Water in \_\_\_\_\_ Inch  
/10ths Merc. in \_\_\_\_\_ Inch  
Volume \_\_\_\_\_ Cu. Ft.  
Rock Pressure \_\_\_\_\_ lbs. \_\_\_\_\_ hrs.  
Oil \_\_\_\_\_ bbls., 1st 24 hrs.  
Fresh water \_\_\_\_\_ feet \_\_\_\_\_ feet  
Salt water \_\_\_\_\_ feet \_\_\_\_\_ feet

| Casing and Tubing | Used in Drilling | Left in Well | Packers        |
|-------------------|------------------|--------------|----------------|
| Size              |                  |              |                |
| 16                |                  |              | Kind of Packer |
| 13                |                  |              |                |
| 10 <u>4-7/8</u>   | <u>1160</u>      | <u>1160</u>  | Size of        |
| 8 1/4             |                  |              |                |
| 6 5/8             |                  |              | Depth set      |
| 5 3/16            |                  |              |                |
| 3                 |                  |              | Perf. top      |
| 2                 |                  |              | Perf. bottom   |
| Liners Used       |                  |              | Perf. top      |
|                   |                  |              | Perf. bottom   |

CASING CEMENTED \_\_\_\_\_ SIZE \_\_\_\_\_ No. Ft. \_\_\_\_\_ Date \_\_\_\_\_  
COAL WAS ENCOUNTERED AT \_\_\_\_\_ FEET \_\_\_\_\_ INCHES  
\_\_\_\_\_ FEET \_\_\_\_\_ INCHES \_\_\_\_\_ FEET \_\_\_\_\_ INCHES  
\_\_\_\_\_ FEET \_\_\_\_\_ INCHES \_\_\_\_\_ FEET \_\_\_\_\_ INCHES

| Formation      | Color | Hard or Soft | Top   | Bottom | Oil, Gas or Water | Depth Found | Remarks |
|----------------|-------|--------------|-------|--------|-------------------|-------------|---------|
| Clay           |       |              | 00000 | 25     |                   |             |         |
| Shale etc.     | Red   |              | 25    | 400    |                   |             |         |
| Slate & shell  |       |              | 400   | 450    |                   |             |         |
| Shale etc.     | Red   |              | 450   | 600    |                   |             |         |
| Lime           |       |              | 600   | 650    |                   |             |         |
| Shale etc.     | Red   |              | 650   | 700    |                   |             |         |
| Lime           |       |              | 700   | 730    |                   |             |         |
| BIG RED        |       |              | 730   | 800    |                   |             |         |
| Slate & shells |       |              | 800   | 860    |                   |             |         |
| RED            |       |              | 860   | 910    |                   |             |         |
| Shells         |       |              | 910   | 950    |                   |             |         |
| Slate & shells |       |              | 950   | 1100   | Top of boulder    |             |         |
| Boulder        |       |              | 1100  | 1120   |                   |             |         |
| Lime & mud,    | pink  |              | 1120  | 1150   |                   |             |         |
| Sand           |       |              | 1150  | 1180   | bottom of well    |             |         |

Log of near by well, adjusted to suit this well.



DEC - 1 1939

