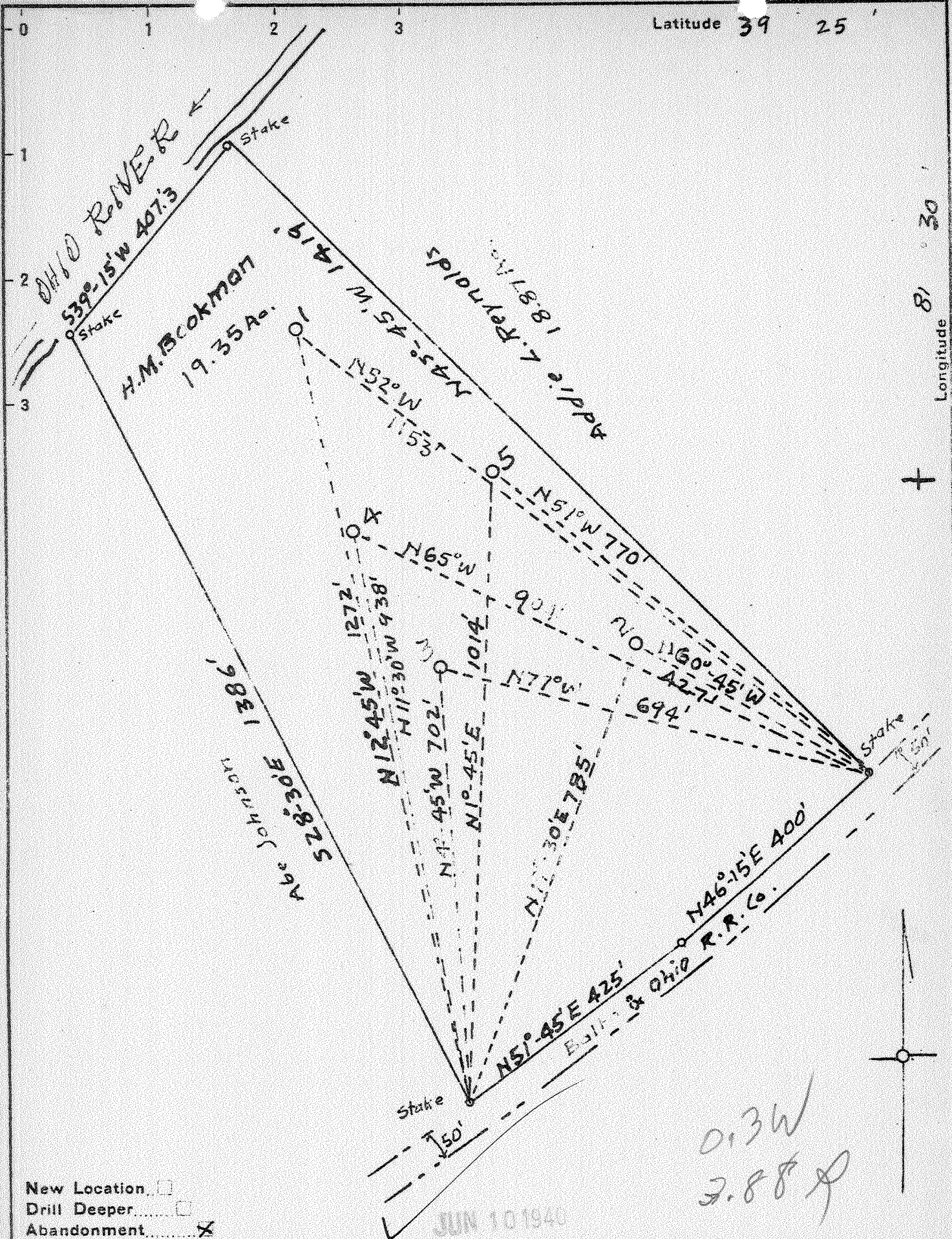


Latitude 39 25

Longitude 81 30



New Location   
 Drill Deeper   
 Abandonment

JUN 10 1940

0.3W  
 2.88 P

Company H.H.Uhl  
 Address Williamstown, Rt. 1, W. Va.  
 Farm H.M. Bookman  
 Tract \_\_\_\_\_ Acres 19.35 Lease No. \_\_\_\_\_  
 Well (Farm) No. 3 Serial No. \_\_\_\_\_  
 Elevation (Spirit Level) 611  
 Quadrangle Parkersburg  
 County Wood District Williams  
 Engineer George R. Clarke, Williamstown, W. Va.  
 Engineer's Registration No. 102  
 File No. \_\_\_\_\_ Drawing No. \_\_\_\_\_  
 Date 5-21-40 Scale 1"=200'

STATE OF WEST VIRGINIA  
 DEPARTMENT OF MINES  
 OIL AND GAS DIVISION  
 CHARLESTON

WELL LOCATION MAP  
 FILE NO. Woo-186A

+ Denotes location of well on United States Topographic Maps, scale 1 to 62,500, latitude and longitude lines being represented by border lines as shown.

- Denotes one inch spaces on border line of original tracing.