

5.28 S
1.28 W

New Location
 Drill Deeper
 Abandonment

Company POWER OIL CO.
 Address PARKERSBURG, W.VA.
 Farm POWER OIL CO.
 Tract 3.8 Acres _____ Lease No. _____
 Well (Farm) No. 1 Serial No. _____
 Elevation (Spirit Level) 975
 Quadrangle MARIETTA
 County WOOD District WALKER
 Engineer L.G. MERRILL
 Engineer's Registration No. 152
 File No. _____ Drawing No. _____
 Date OCT. 27, 1947 Scale 100

STATE OF WEST VIRGINIA
 DEPARTMENT OF MINES
 OIL AND GAS DIVISION
 CHARLESTON

WELL LOCATION MAP
 FILE NO. W00-271-A

+ Denotes location of well on United States Topographic Maps, scale 1 to 62,500, latitude and longitude lines being represented by border lines as shown.
 - Denotes one inch spaces on border line of original tracing.

Walker District, Wood County, W. Va.

Hope Natural Gas Co. (No. 5387).

Location made Oct. 19, 1918. First work done, May 9, 1919.

Rig commenced, July 22, 1919; rig completed, July 31, 1919.

Drilling commenced Aug. 14, 1919; drilling completed, Oct. 30, 1919.

Rig contractor, H.N.G.Co. Drilling contractor, H.N.G.Co. string No. 368.

Drillers: O. H. D. Vaughn and Chas. Little.

Tool dressers: J. C. Congleton and S. H. Allman.

10" casing, 916' 2" charged to well; 809' 8" put in and left in well.

8 1/2" casing, 2464' 4" charged to well; 2039' 9" put in and left in well.

6-5/8", 3937' charged to well and left at well, not in use.

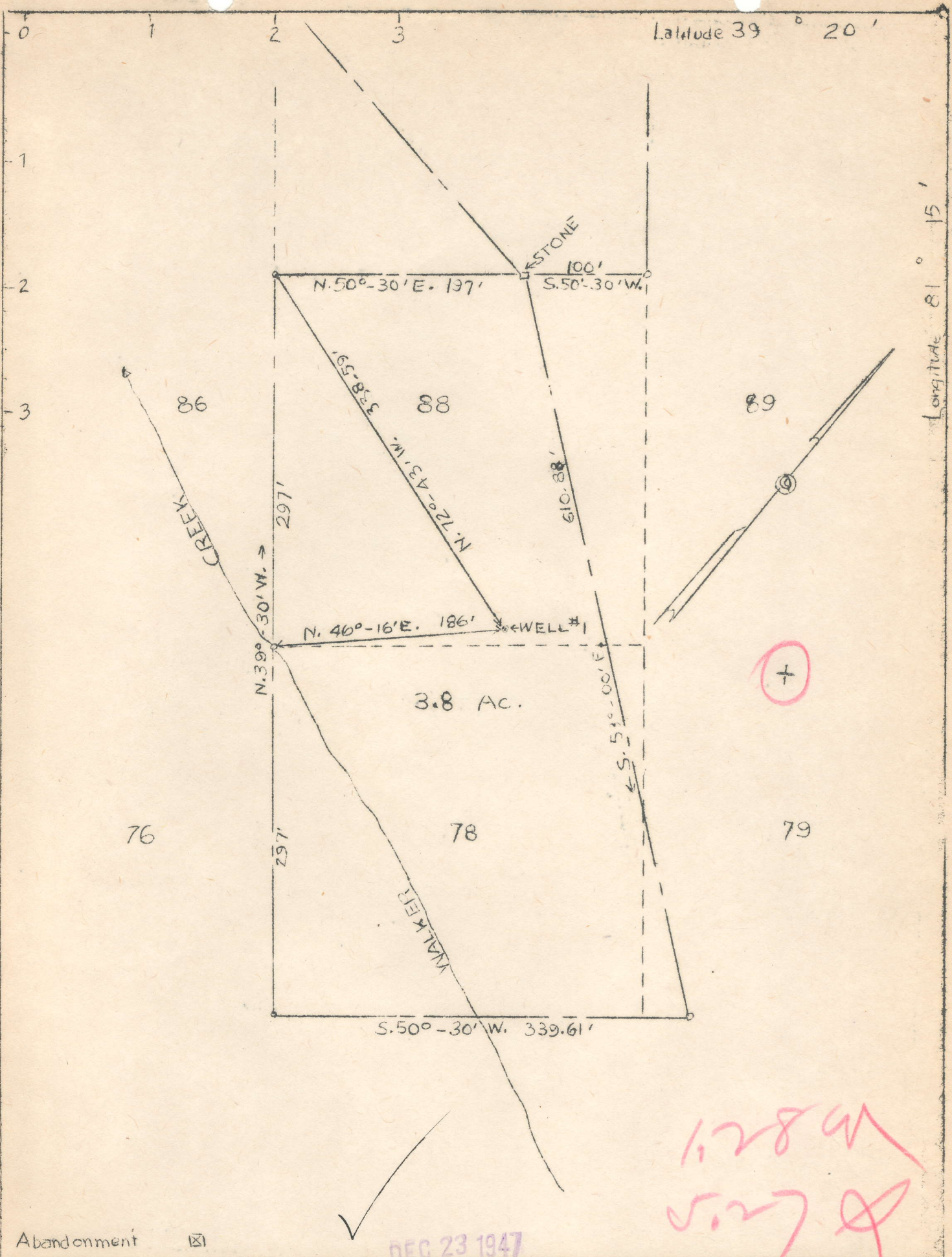
10" Steel shoe at 800' (Steel line).

8 1/2" Steel shoe at 2020' (Steel line).

Well was not shot. Well was not cemented.

Sold to Power Oil Co.

	Top.	Bottom.
Fire clay	40	40
Gas? Sand (fresh water at 130')	40	155
Slate	155	158
First Salt? Sand	158	268
Second Salt? Sand	268	270
Slate	270	275
Big Injun? Sand	275	385
Shell and slate	385	776
Berea? Sand (scum oil, 778') (hard to shells?)	776	782
Shell	800	803
Slate	803	817
Lime to white slate	817	1300
Shell at (scum oil, 1300')	1300	
Slate and shells, soft (SLM--1687') (oil and gas at 1689')	1687	1689
Lime (8" casing) (SLM--2020')	2017	2022
Slate	2022	2035
Lime, hard	2035	2075
Slate	2075	2085
Lime	2085	2102
Sand (show of oil, 2159')	2159	2162
Sand (oil and gas at 2281')	2280	2282
Total depth (SLM--2285')		2285
Power Oil Co. drilled to		2295



1.289
5.27

Abandonment

Company Power Oil Co.
 Address Parkersburg, W. Va.
 Farm Power Oil Co.
 Tract 3.8 Acres Lease No.
 Well (Farm) No. 1 Serial No.
 Elevation (Spirit Level) 975
 Quadrangle Marietta
 County Wood District Walker
 Engineer L. G. Merrill
 Engineer's Registration No. 152
 File No. Drawing No.
 Date Oct. 27, 1947 Scale 100

STATE OF WEST VIRGINIA
 Department of Mines
 Oil and Gas Division
 Charleston

WELL LOCATION MAP
 File No. Woo-267

See 271A

+ Denotes location of well on U.S. Topographic Maps, scale 1 to 62,500, latitude & longitude lines being represented by border lines as shown.
 - Denotes one inch spaces on border line of original tracing.

dup. no. 7

5A