

Company W. I. Gettman

Address 812 Colum. Av. Williamstown, W. Va.

Farm Joanna Drake

Tract \_\_\_\_\_ Acres 155 Lease No. \_\_\_\_\_

Wells (Farm) No. 12, 13, 14, 15 Serial No. \_\_\_\_\_

Elevation (Spirit Level) #12 818 #13 850 #14 846 #15 835

Quadrangle Marietta

County Wood District Williams

Engineer Robert K. Anderson  
by O. Meredith

Engineer's Registration No. 296

File No. \_\_\_\_\_ Drawing No. \_\_\_\_\_

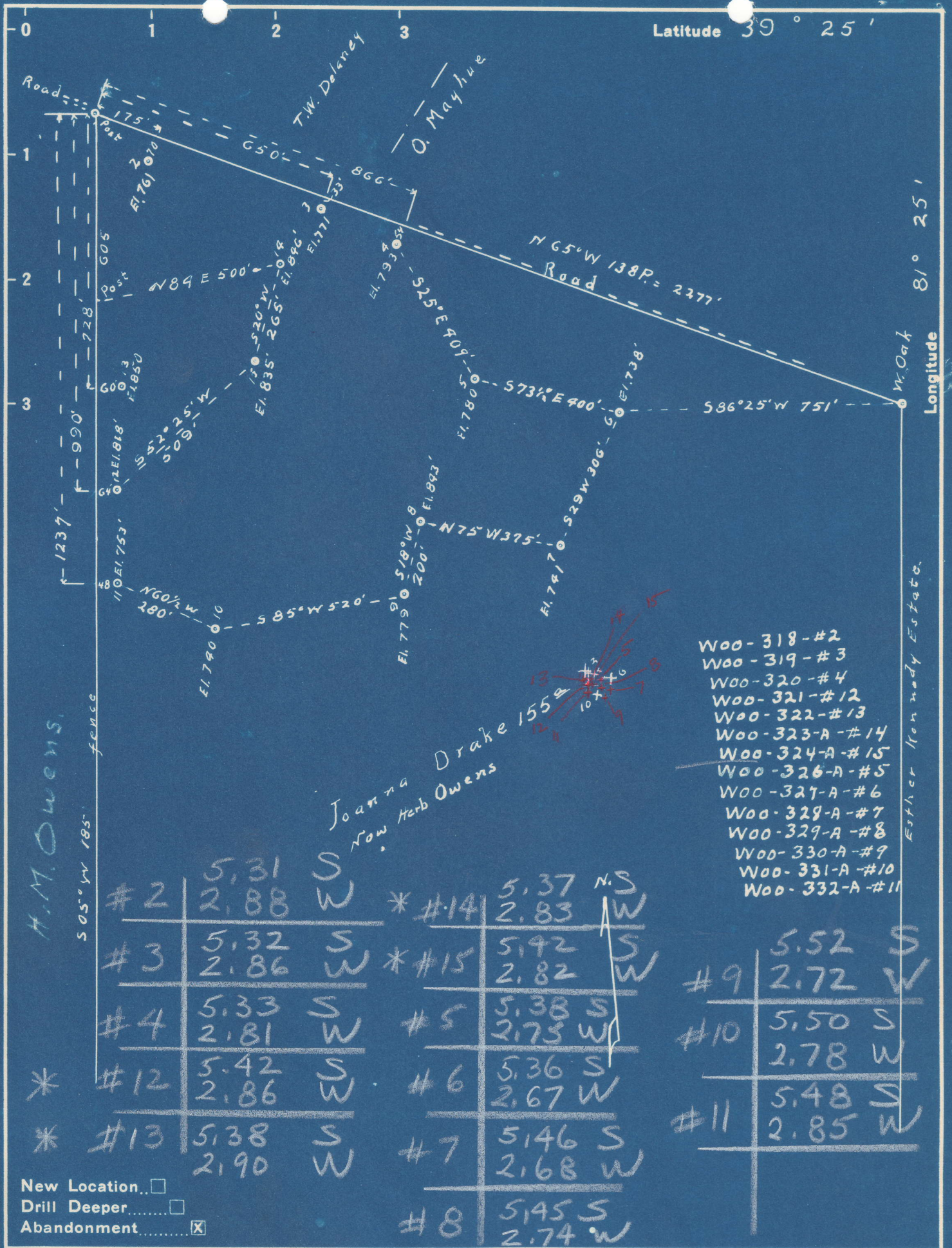
Date Jan 26 1949 Scale 1 in = 20 Poles

STATE OF WEST VIRGINIA  
DEPARTMENT OF MINES  
OIL AND GAS DIVISION  
CHARLESTON

**WELL LOCATION MAP**  
W00-321-A-#12  
FILE NO. ~~W00-322-A-#13~~  
W00-323-A-#14  
W00-324-A-#15

+ Denotes location of well on United States Topographic Maps, scale 1 to 62,500, latitude and longitude lines being represented by border lines as shown.

- Denotes one inch spaces on border line of original tracing.



Company W. L. Gettman  
 Address 812 Colum. Av. Williams town W. Va.  
 Farm Joanna Drake (now Herb Owens)  
 Tract Acres 155 Lease No. WC  
 Well (Farm) No. 1 to 15 Serial No. 1 to 15  
 Elevation (Spirit Level) 267 271 273 280 288 299 307 318 350 386 385  
 Quadrangle Marietta  
 County Wood District Williams  
 Engineer Robert R. Anderson  
 by O. Meredith  
 Engineer's Registration No. 296  
 File No. \_\_\_\_\_ Drawing No. \_\_\_\_\_  
 Date Jan 7 49 Scale 1 in = 20 Poles

STATE OF WEST VIRGINIA  
 DEPARTMENT OF MINES  
 OIL AND GAS DIVISION  
 CHARLESTON

WELL LOCATION MAP

FILE NO. See ABOVE

+ Denotes location of well on United States Topographic Maps, scale 1 to 62,500, latitude and longitude lines being represented by border lines as shown.

- Denotes one inch spaces on border line of original tracing.

\* See Woo-321-A