

Company W.L. Gettman  
 Address 812 Colum. Av. Williams town W. Va.  
 Farm Joanna Drake (now Herb Owens)  
 Tract \_\_\_\_\_ Acres 155 Lease No. \_\_\_\_\_  
 Well (Farm) No. 1 to 15 Serial No. \_\_\_\_\_  
 Elevation (Spirit Level) \_\_\_\_\_  
 Quadrangle Marietta  
 County Wood District Williams  
 Engineer Robert K. Anderson  
 by O. Meredith  
 Engineer's Registration No. 296  
 File No. \_\_\_\_\_ Drawing No. \_\_\_\_\_  
 Date Jan 7 49 Scale 1 in = 20 Poles

STATE OF WEST VIRGINIA  
 DEPARTMENT OF MINES  
 OIL AND GAS DIVISION  
 CHARLESTON

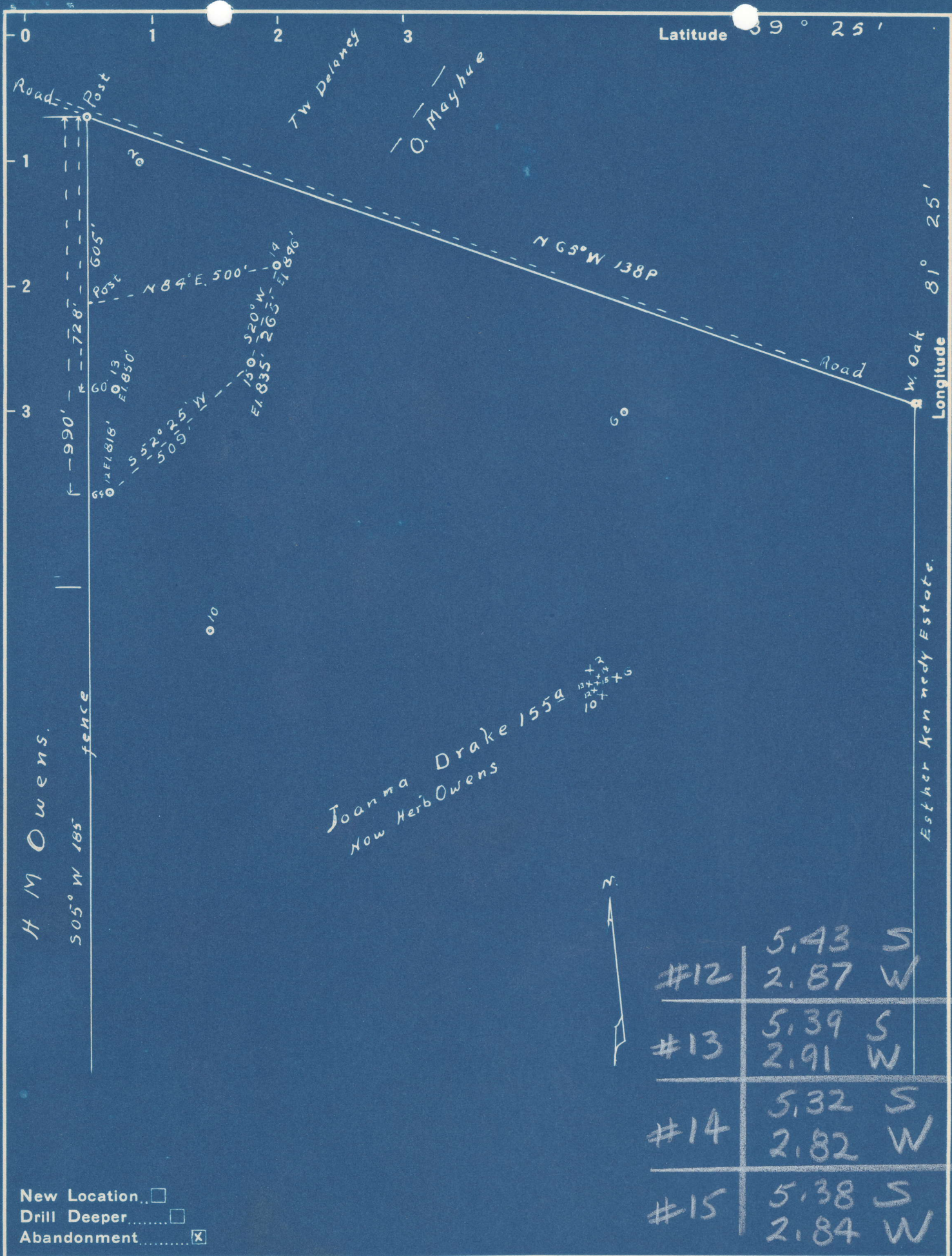
### WELL LOCATION MAP

FILE NO. See ABOVE

+ Denotes location of well on United States Topographic Maps, scale 1 to 62,500, latitude and longitude lines being represented by border lines as shown.

- Denotes one inch spaces on border line of original tracing.





Company W. I. Gettman

Address 812 Colum. Av. Williams town, W. Va.

Farm Joanna Drake

Tract \_\_\_\_\_ Acres 155 Lease No. \_\_\_\_\_

Wells (Farm) No. 12, 13, 14, 15 Serial No. \_\_\_\_\_

Elevation (Spirit Level) #12 818 #13 850 #14 826 #15 835

Quadrangle Marietta

County Wood District Williams

Engineer Robert H. Anderson  
by O. Meredith

Engineer's Registration No. 296

File No. \_\_\_\_\_ Drawing No. \_\_\_\_\_

Date Jan 26 1949 Scale 1 in = 20 Poles

STATE OF WEST VIRGINIA  
DEPARTMENT OF MINES  
OIL AND GAS DIVISION  
CHARLESTON

WELL LOCATION MAP

W00-321-A-#12  
FILE NO. W00-322-A-#13  
W00-323-A-#14  
W00-324-A-#15

+ Denotes location of well on United States Topographic Maps, scale 1 to 62,500, latitude and longitude lines being represented by border lines as shown.

- Denotes one inch spaces on border line of original tracing.