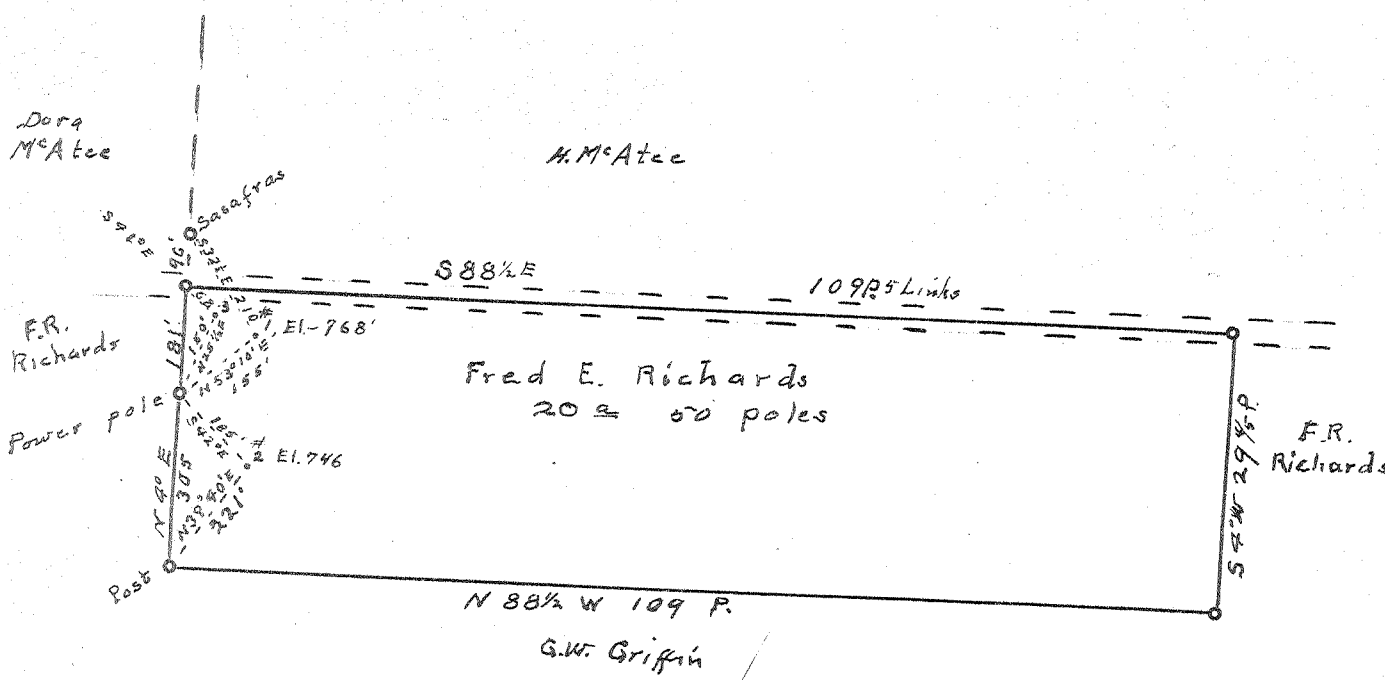


Latitude 39° 25'

Longitude 81° 25'



New Location..
 Drill Deeper.....
 Abandonment.....

Which one? 0.37 W
 ✓ ✓ JUL 13 1953 4.6 ✓

Company Tri County Producing Co.
 Address Parkersburg, W.Va.
 Farm Fred E. Richards
 Tract _____ Acres 20+ Lease No. _____
 Well (Farm) No. 1, 2, 3 Serial No. _____
 Elevation (Spirit Level) 768 ⁽¹⁾ 746 ⁽²⁾ 766 ⁽³⁾
 Quadrangle Marietta
 County Wood District Union
 Engineer Robert R. Andersson
 Engineer's Registration No. 296
 File No. _____ Drawing No. _____
 Date 6/18 53 Scale 1 in = 20 poles

STATE OF WEST VIRGINIA
 DEPARTMENT OF MINES
 OIL AND GAS DIVISION
 CHARLESTON

WELL LOCATION MAP
 FILE NO. W00-562-A-#1
W00-563-A-#2
W00-564-A-#3

+ Denotes location of well on United States Topographic Maps, scale 1 to 62,500, latitude and longitude lines being represented by border lines as shown.

- Denotes one inch spaces on border line of original tracing.

FRED E. RICHARDS MS. 1, 2 & 3 - TRI-COUNTY PROD. CO., W00-5623A-A