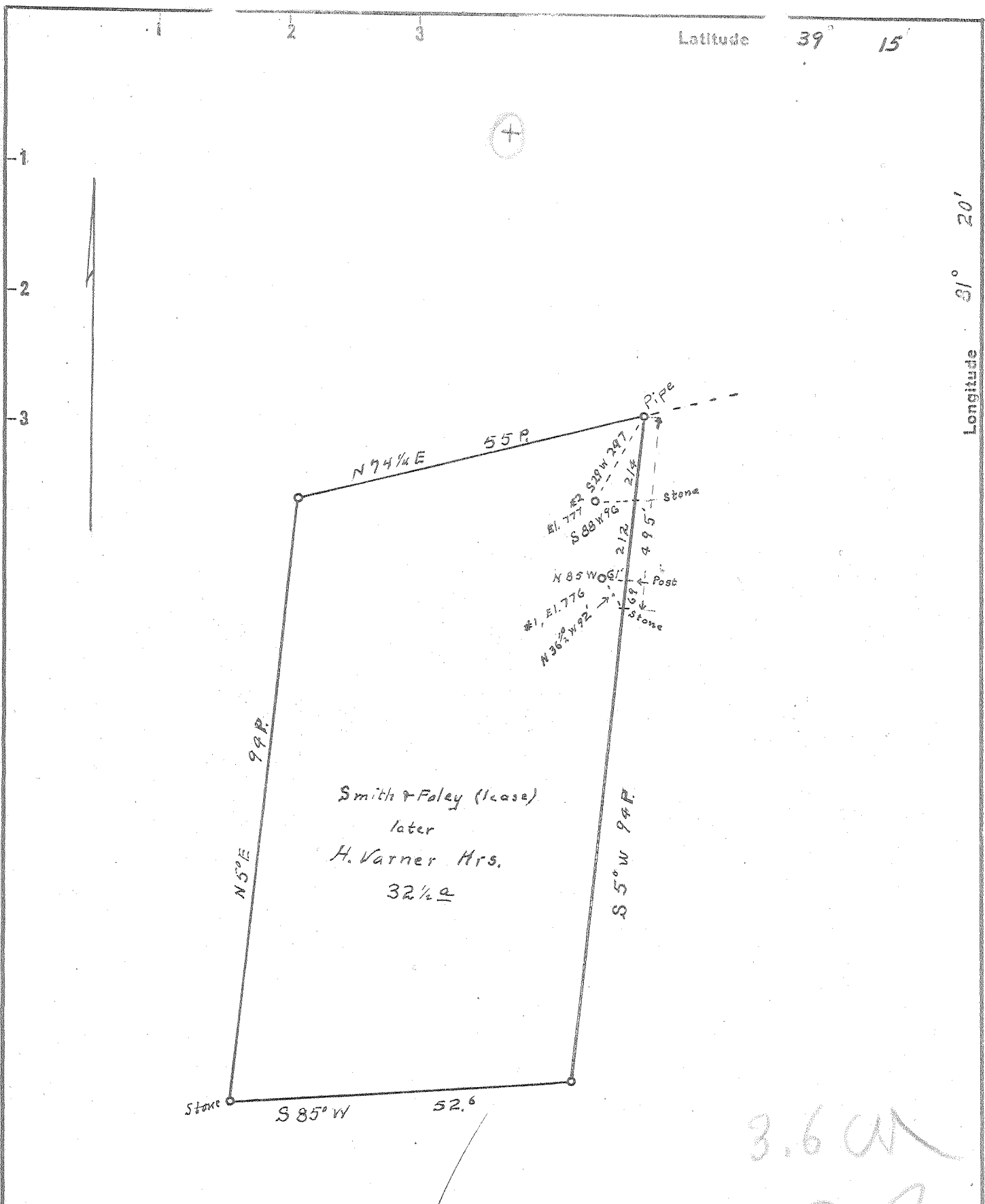


Latitude 39° 15'

Longitude 81° 20'



3.6 CM
0.92

New Location...
 Drill Deeper.....
 Abandonment.....

FEB 15 1954

Company Smith and Feick
 Address R2, Walker 2, W. Va.
 Farm Smith & Foley Varner Hrs. (surface)
 Tract _____ Acres 32 1/2 Lease No. _____
 Well (Farm) No. 2 and 1 Serial No. _____
 Elevation (Spirit Level) (4) 777 ; #1 776
 Quadrangle Elizabeth
 County Wood District Walker
 Engineer Robert K. Anderson
 by O. Meredith
 Engineer's Registration No. 296
 File No. _____ Drawing No. _____
 Date 11/27 53 Scale 1 in = 20 poles

STATE OF WEST VIRGINIA
 DEPARTMENT OF MINES
 OIL AND GAS DIVISION
 CHARLESTON

WELL LOCATION MAP
 FILE NO. W00-613-A-#2

+ Denotes location of well on United States Topographic Maps, scale 1 to 62,500, latitude and longitude lines being represented by border lines as shown.
 - Denotes one inch spaces on border line of original tracing.

SMITH & FOLEY NO. 2 - SMITH & FEICK - W00-613-A
 (H. VARNER HEIRS)