

Latitude 39° 20'

Longitude 81° 20'

formerly  
As. Dyle

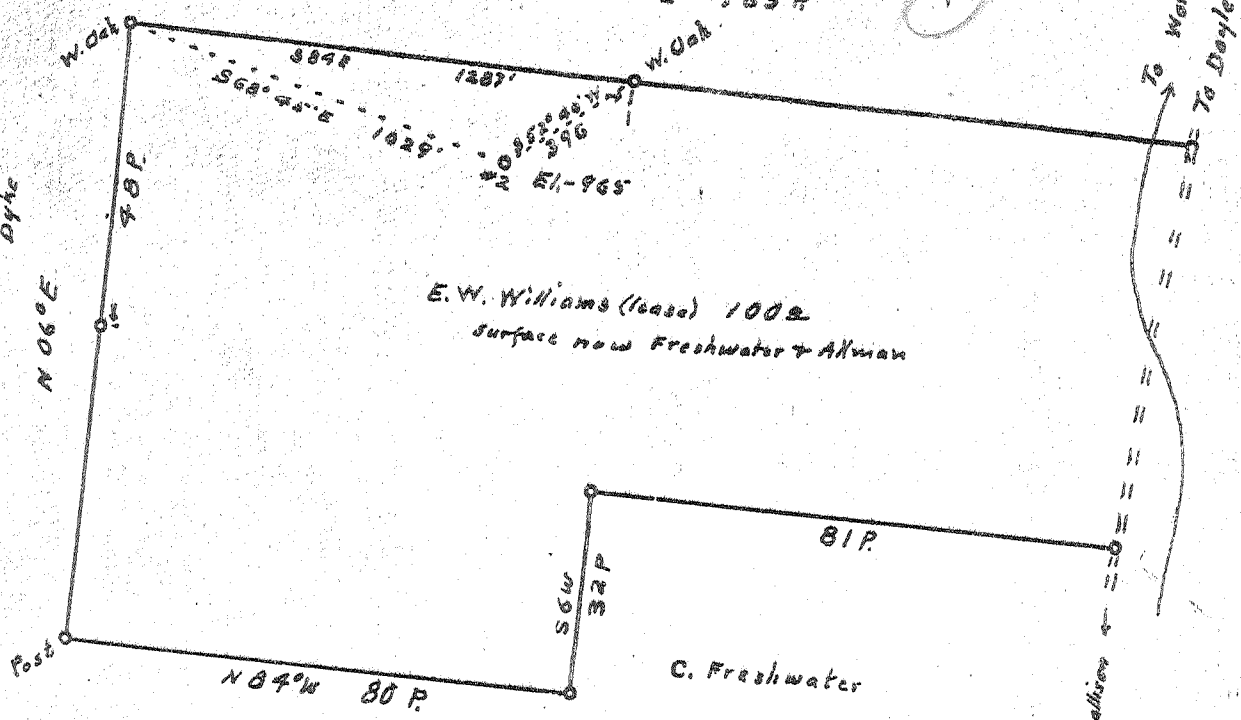
E. J. Fleming



S89° E 165 P

E. W. Williams (lease) 1002  
surface now Freshwater & Alkman

C. Freshwater



New Location...   
Drill Deeper.....   
Abandonment.....

AUG 9 1955

Handwritten notes: 152 W, 373, and a circled symbol.

Company Pierson & Feick  
 Address R.R. 2 Walker W. Va.  
 Farm E. W. Williams  
 Tract \_\_\_\_\_ Acres 100 Lease No. \_\_\_\_\_  
 Well (Farm) No. 2 Serial No. \_\_\_\_\_  
 Elevation (Spirit Level) 965  
 Quadrangle Marietta  
 County Wood District Union  
 Engineer Robert R. Anderson  
By G. Meredith  
 Engineer's Registration No. 296  
 File No. \_\_\_\_\_ Drawing No. \_\_\_\_\_  
 Date 9/5 1955 Scale 1 in = 30 Feet

STATE OF WEST VIRGINIA  
DEPARTMENT OF MINES  
OIL AND GAS DIVISION  
CHARLESTON

WELL LOCATION MAP  
FILE NO. W00-639-A

+ Denotes location of well on United States Topographic Maps, scale 1 to 62,500, latitude and longitude lines being represented by border lines as shown.

- Denotes one inch spaces on border line of original tracing.



STATE OF WEST VIRGINIA  
DEPARTMENT OF MINES  
OIL AND GAS DIVISION

301

Quadrangle Monetta  
Permit No. 639-A

WELL RECORD

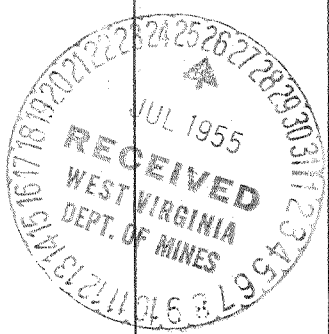
Oil or Gas Well \_\_\_\_\_  
(KIND)

Company Piersol, & Feick  
Address walker, rt, 2 W.VA  
Farm E.W. Williams Acres 100  
Location (waters) Worthington ek  
Well No. 2 Elev. 965  
District UNION County wood  
The surface of tract is owned in fee by Charles, Freshwater  
walker, rt, 2 W.VA  
Address E.W. Williams  
Mineral rights are owned by E.W. Williams  
Parkersburg W.VA  
Address  
Drilling commenced about 1904  
Drilling completed " same  
Date Shot From \_\_\_\_\_ To \_\_\_\_\_  
With \_\_\_\_\_  
Open Flow /10ths Water in \_\_\_\_\_ Inch  
/10ths Merc. in \_\_\_\_\_ Inch  
Volume \_\_\_\_\_ Cu. Ft.  
Rock Pressure \_\_\_\_\_ lbs. \_\_\_\_\_ hrs.  
Oil \_\_\_\_\_ bbls., 1st 24 hrs.  
Fresh water \_\_\_\_\_ feet \_\_\_\_\_ feet  
Salt water \_\_\_\_\_ feet \_\_\_\_\_ feet

Casing and Tubing	Used in Drilling	Left in Well	Packers
Size			Kind of Packer
16			
13			
10			Size of
8 1/2	<u>2150'</u>		Depth set
6 1/2			
5 3/16			
3			Perf. top
2	<u>none</u>		Perf. bottom
Liners Used			Perf. top
			Perf. bottom

CASING CEMENTED \_\_\_\_\_ SIZE \_\_\_\_\_ No. Ft. \_\_\_\_\_ Date \_\_\_\_\_  
COAL WAS ENCOUNTERED AT \_\_\_\_\_ FEET \_\_\_\_\_ INCHES  
\_\_\_\_\_ FEET \_\_\_\_\_ INCHES \_\_\_\_\_ FEET \_\_\_\_\_ INCHES  
\_\_\_\_\_ FEET \_\_\_\_\_ INCHES \_\_\_\_\_ FEET \_\_\_\_\_ INCHES

Formation	Color	Hard or Soft	Top	Bottom	Oil, Gas or Water	Depth Found	Remarks
Clay & red rock			000	825'			
Cave			825'	950'			
slate & shale			925'	1275'			
cow run sand			1275'	1300'			
shale			1300'	1800'			
Injun sand			1800'	1850'			
lime & slate			1850'	2325'			
oil sand			2325'	2335'			
			total depth	2335'			



OCT 6 1955

Formation	Color	Hard or Soft	Top	Bottom	Oil, Gas or Water	Depth Found	Remarks

Date 7-23, 1955

APPROVED Piersol & Fuchs, Owner

By C R Piersol  
(Title)