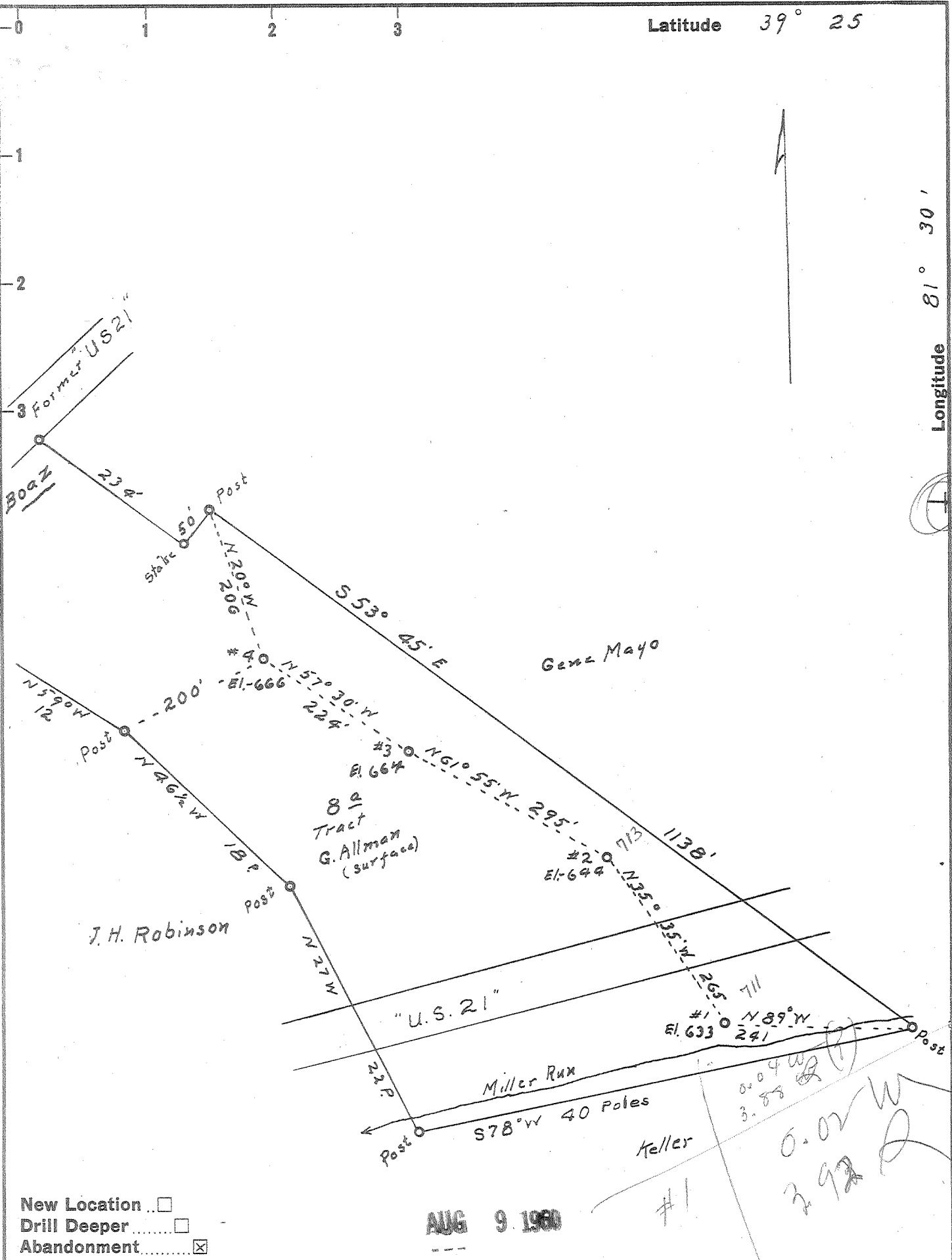


Latitude 39° 25'

Longitude 81° 30'



New Location   
 Drill Deeper   
 Abandonment

AUG 9 1960

Company C. E. Beardmore  
 Address 1003 Glendale Road, Marietta, O.  
 Farm O. H. Johnson (lease) G. Allman  
 Tract 8 1/2 Acres 85 Lease No. \_\_\_\_\_  
 Well (Farm) No. 1, 2, 3, 4 Serial No. \_\_\_\_\_  
 Elevation (Spirit Level) #1-633, #2-699, #3-664, #4-666  
 Quadrangle Parkersburg  
 County Wood District Williams  
 Engineer Robert R. Anderson  
 by O. Meredith  
 Engineer's Registration No. 296  
 File No. \_\_\_\_\_ Drawing No. \_\_\_\_\_  
 Date 6/19 59 Scale 1 in = 10 Poles

STATE OF WEST VIRGINIA  
 DEPARTMENT OF MINES  
 OIL AND GAS DIVISION  
 CHARLESTON

WELL LOCATION MAP

FILE NO. WOO-711-A-#1  
WOO-713-A-#2

+ Denotes location of well on United States Topographic Maps, scale 1 to 62,500, latitude and longitude lines being represented by border lines as shown.  
 - Denotes one inch spaces on border line of original tracing.

O. H. JOHNSON (G. ALLMAN) HAS, LESSEE - C. E. BEARDMORE - WOO-711-A & 713-A



348

STATE OF WEST VIRGINIA  
DEPARTMENT OF MINES  
OIL AND GAS DIVISION

Quadrangle \_\_\_\_\_

Permit No. W50 712-6/713-A

WELL RECORD

Oil or Gas Well Oil  
(KIND)

Company C. E. Beardmore  
Address 1003 Glendale Rd., Marietta, Ohio  
Farm Glenn Allman Acres 8  
Location (waters) Ohio River  
Well No. 2 Elev. 644'  
District Williams County Wood  
The surface of tract is owned in fee by Glenn Allman  
Williamstown, W. Va. Address \_\_\_\_\_  
Mineral rights are owned by Same  
Address \_\_\_\_\_  
Drilling commenced No Record  
Drilling completed \_\_\_\_\_  
Date Shot \_\_\_\_\_ From \_\_\_\_\_ To \_\_\_\_\_  
With \_\_\_\_\_  
Open Flow \_\_\_\_\_ /10ths Water in \_\_\_\_\_ Inch  
\_\_\_\_\_ /10ths Merc. in \_\_\_\_\_ Inch  
Volume \_\_\_\_\_ Cu. Ft.  
Rock Pressure \_\_\_\_\_ lbs. \_\_\_\_\_ hrs.  
Oil \_\_\_\_\_ bbls., 1st 24 hrs.  
WELL ACIDIZED \_\_\_\_\_  
WELL FRACTURED \_\_\_\_\_

Casing and Tubing	Used in Drilling	Left in Well	Packers
Size			Kind of Packer
16			
13			
10			Size of
8 1/4			
<del>6 1/2</del> 6 1/4	800	800	Depth set
5 3/16			
3			Perf. top
2			Perf. bottom
Liners Used			Perf. top
			Perf. bottom

CASING CEMENTED \_\_\_\_\_ SIZE \_\_\_\_\_ No. Ft. \_\_\_\_\_ Date \_\_\_\_\_  
COAL WAS ENCOUNTERED AT \_\_\_\_\_ FEET \_\_\_\_\_ INCHES  
\_\_\_\_\_ FEET \_\_\_\_\_ INCHES FEET \_\_\_\_\_ INCHES  
\_\_\_\_\_ FEET \_\_\_\_\_ INCHES FEET \_\_\_\_\_ INCHES

RESULT AFTER TREATMENT \_\_\_\_\_

ROCK PRESSURE AFTER TREATMENT \_\_\_\_\_

Fresh Water \_\_\_\_\_ Feet Salt Water \_\_\_\_\_ Feet

Formation	Color	Hard or Soft	Top	Bottom	Oil, Gas or Water	Depth	Remarks
Maxburg			990	1015	Oil		

NOV 5 1959

