

New River & Pocahontas
Consolidated Coal Co.
17,350 a

Coordinate values of loc. 9063
N-61546.04
W-15790.58

RECEIVED
Office of Oil and Gas

JAN 13 2025

WV Department of
Environmental Protection

New Location
Drill Deeper
Abandonment

Map Sh. 222-W. 5131 W 59 F 779 P 2728-29

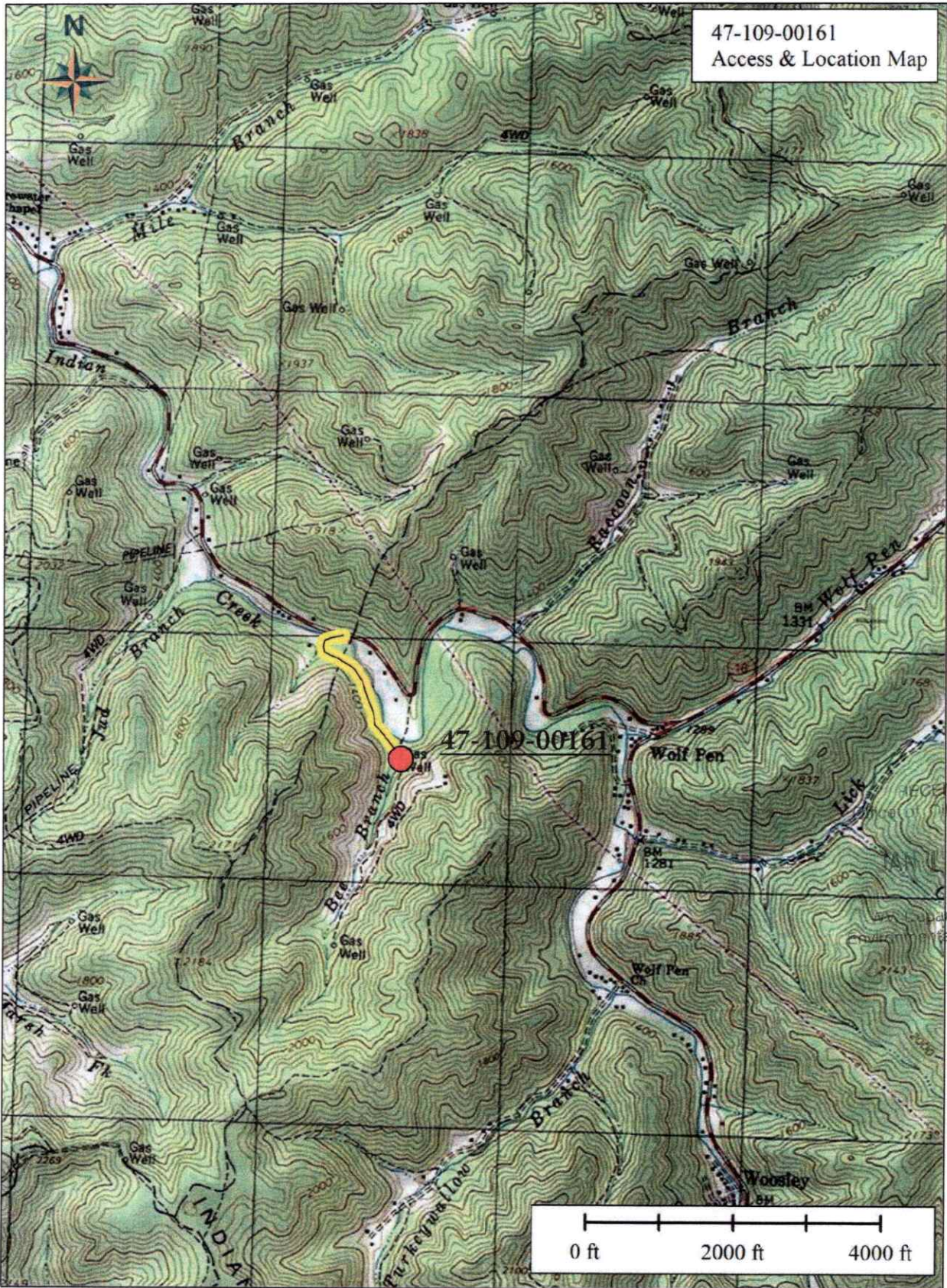
Company	Hope Natural Gas Co
Address	Clarksburg, W.Va.
Farm	New River & Poca Consol. Coal Co.
Tract	Acres 17350 Lease No. 56244
Well (Farm) No.	Serial No. 9063
Elevation (Spirit Level)	1314'
Quadrangle	Pineville
County	Wyoming District Center
Engineer	W.M. Bowers
Engineer's Registration No.	900
File No.	Drawing No.
Date	11-6-46 Scale 1" = 300'

STATE OF WEST VIRGINIA
DEPARTMENT OF MINES
OIL AND GAS DIVISION
CHARLESTON

WELL LOCATION MAP
FILE NO. WYO-161

+ Denotes location of well on United States Topographic Maps, scale 1 to 62,500, latitude and longitude lines being represented by border lines as shown.

- Denotes one inch spaces on border line of original tracing.



01/31/2025

WW-7
8-30-06



West Virginia Department of Environmental Protection
Office of Oil and Gas

WELL LOCATION FORM: GPS

API: 47-109-00161 WELL NO.: WYO 161

FARM NAME: New River Pocahontas Coal Co.

RESPONSIBLE PARTY NAME: Boone East Development Co., LLC

COUNTY: Wyoming DISTRICT: Center

QUADRANGLE: Pineville

SURFACE OWNER: Bluestone Resources, LLC

ROYALTY OWNER: WPP, LLC

UTM GPS NORTHING: 4154490.360

UTM GPS EASTING: 446532.62 GPS ELEVATION: 1,314'

The Responsible Party named above has chosen to submit GPS coordinates in lieu of preparing a new well location plat for a plugging permit or assigned API number on the above well. The Office of Oil and Gas will not accept GPS coordinates that do not meet the following requirements:

1. Datum: NAD 1983, Zone: 17 North, Coordinate Units: meters, Altitude: height above mean sea level (MSL) – meters.
2. Accuracy to Datum – 3.05 meters
3. Data Collection Method:

Survey grade GPS _____: Post Processed Differential _____

Real-Time Differential _____

Mapping Grade GPS X: Post Processed Differential _____

Real-Time Differential X

4. Letter size copy of the topography map showing the well location.

I the undersigned, hereby certify this data is correct to the best of my knowledge and belief and shows all the information required by law and the regulations issued and prescribed by the Office of Oil and Gas.

Jim Cappucci
Signature

Manager and President
Title

1/3/2025
Date

RECEIVED
Office of Oil and Gas

JAN 13 2025

WV Department of
Environmental Protection

01/31/2025