

4710900516 P



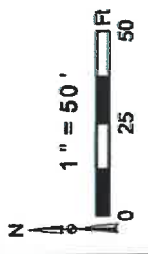
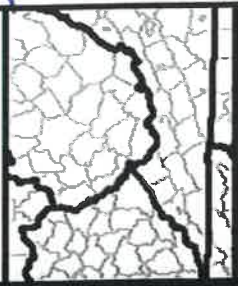
Diversified Gas & Oil Corporation
100 Diversified Way
Pikeville KY, 41051

47-109-00516
Well Plugging Map

Legend

- Well
- ▬ Access Road
- ▨ Pits
- ▭ Pad
- Public Roads

RECEIVED
Office of Oil and Gas
AUG 23 2024
WV Department of Environmental Protection



Primary Pit Secondary Pit

Well No.: 47-109-00516
 UTM 83-17 Meters
 North: 4168767.56
 East: 438292.4
 Elev.: 519.18 M
 Elev.: 1702.92 Ft

Source: East, West, South, North, and the Oil User Community

09/13/2024

4710900516



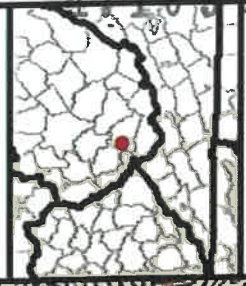
Diversified Gas & Oil Corporation
300 Diversified Way
Pineville KY, 41051

47-109-00516
Well Plugging Map

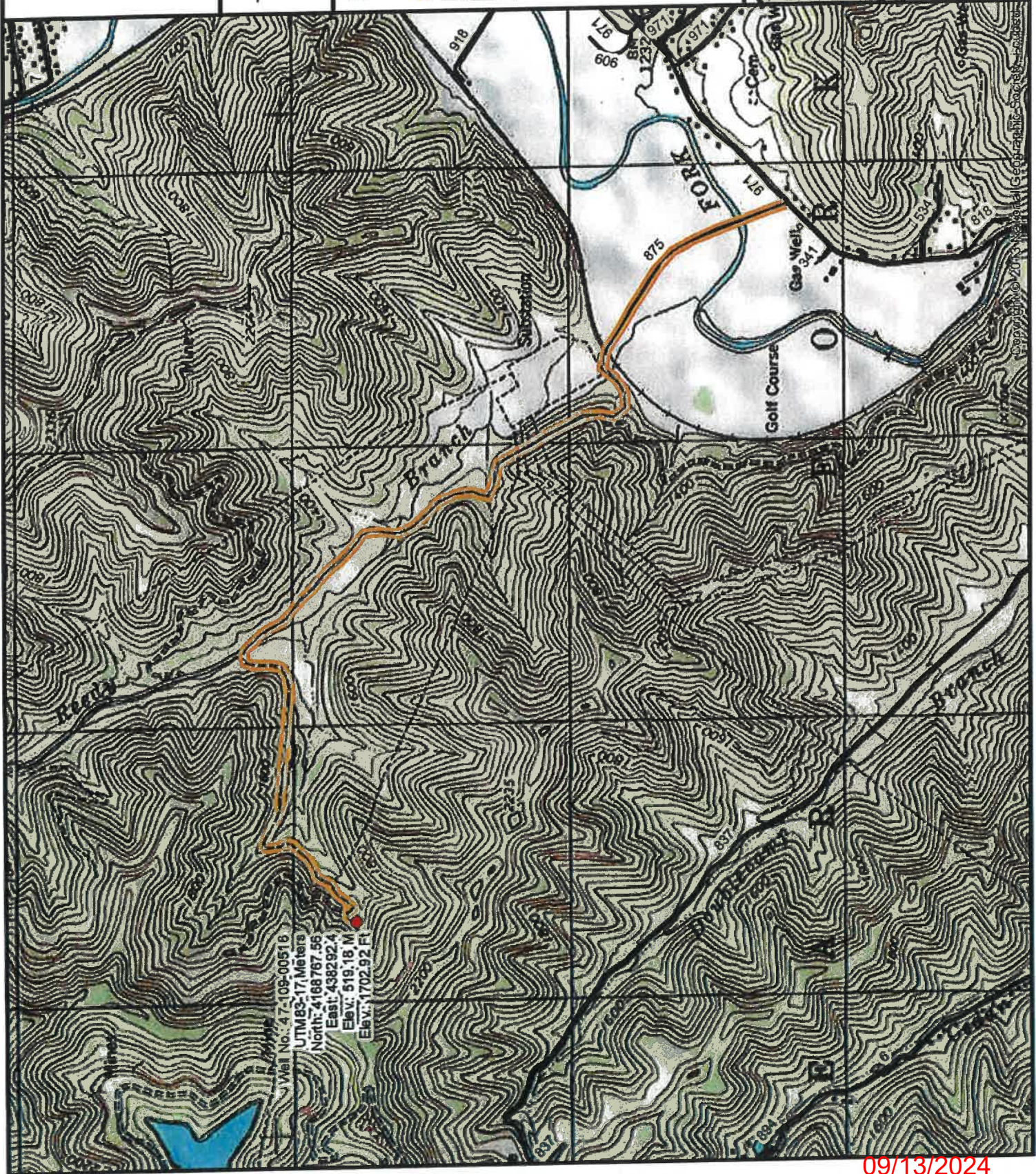
Legend

- Well
- Access Road
- ▨ Pits
- Pad
- Public Roads

RECEIVED
Office of Oil and Gas
AUG 23 2024
by the Bureau of Geological Protection



1" = 1,500'
0 700 1,400
N



Well No. 47-109-00516
UTM83-17 Meters
North: 4168767.56
East: 438292.4
Elev.: 519.18 M
Elev.: 1702.92 Ft

09/13/2024

