

10900533P

WW-7
8-30-06



West Virginia Department of Environmental Protection
Office of Oil and Gas

WELL LOCATION FORM: GPS

API: 47-109-00533 WELL NO.: 10218

FARM NAME: Beazley (Toler)

RESPONSIBLE PARTY NAME: Hayden & Harper Energy KA, LLC

COUNTY: Wyoming DISTRICT: Oceana

QUADRANGLE: Pineville/Oceana 7.5

SURFACE OWNER: Charles Toler

ROYALTY OWNER: Charles Toler

UTM GPS NORTHING: 4176661.2

UTM GPS EASTING: 440597.5 GPS ELEVATION: 1670

The Responsible Party named above has chosen to submit GPS coordinates in lieu of preparing a new well location plat for a plugging permit or assigned API number on the above well. The Office of Oil and Gas will not accept GPS coordinates that do not meet the following requirements:

1. Datum: NAD 1983, Zone: 17 North, Coordinate Units: meters, Altitude: height above mean sea level (MSL) – meters.
2. Accuracy to Datum – 3.05 meters
3. Data Collection Method:

Survey grade GPS xx : Post Processed Differential _____
Real-Time Differential _____

Mapping Grade GPS _____ : Post Processed Differential _____
Real-Time Differential _____

4. **Letter size copy of the topography map showing the well location.**

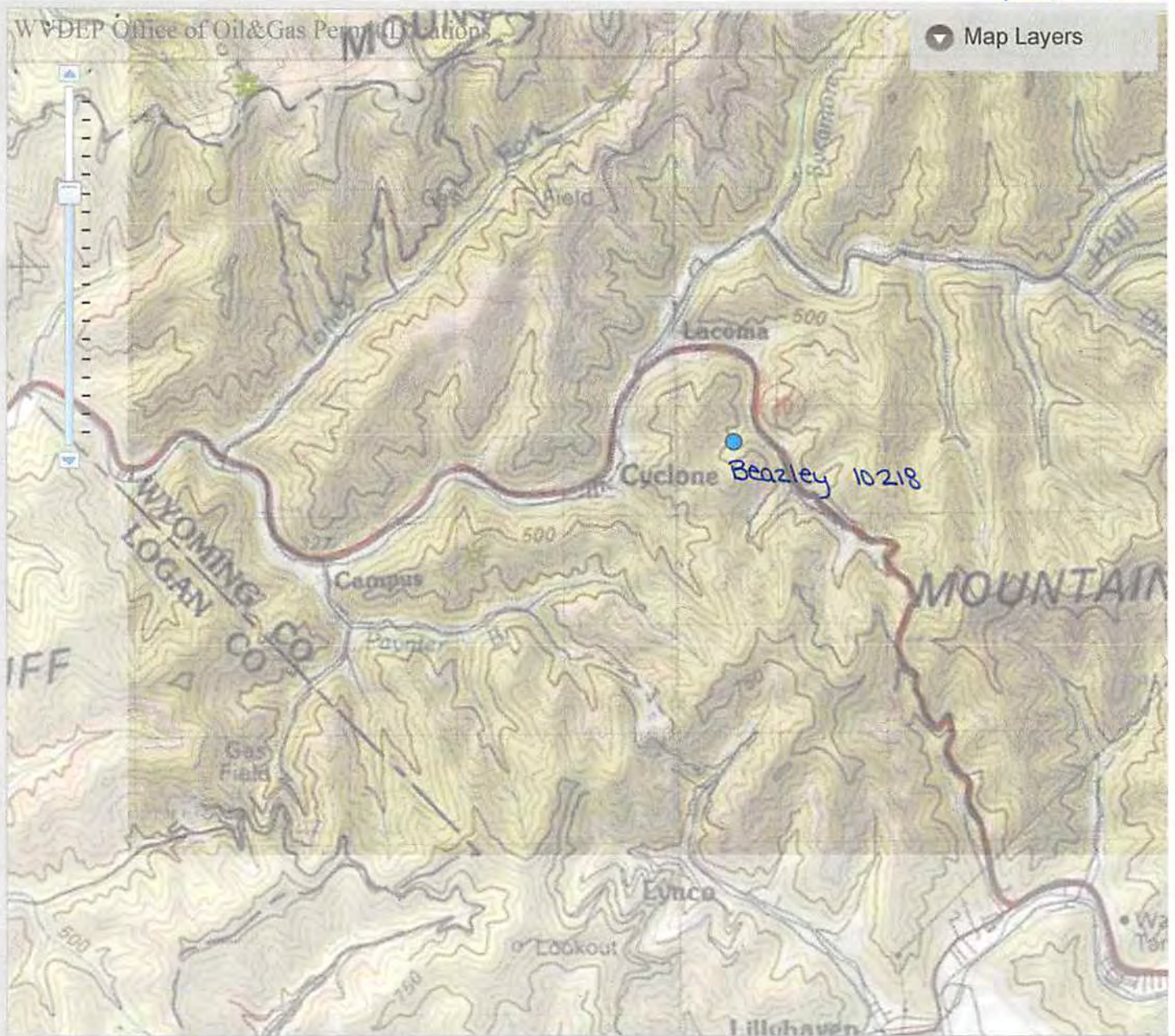
I the undersigned, hereby certify this data is correct to the best of my knowledge and belief and shows all the information required by law and the regulations issued and prescribed by the Office of Oil and Gas.

Charles Toler
Signature

Office Manager
Title

October 28, 2014
Date

Received
Office of Oil & Gas
NOV 20 2014



Attribute Search Results Legend Location Search About

Handwritten signature

Beazley 10218 47-109-00533

Received
Office of Oil & Gas
NOV 20 2014