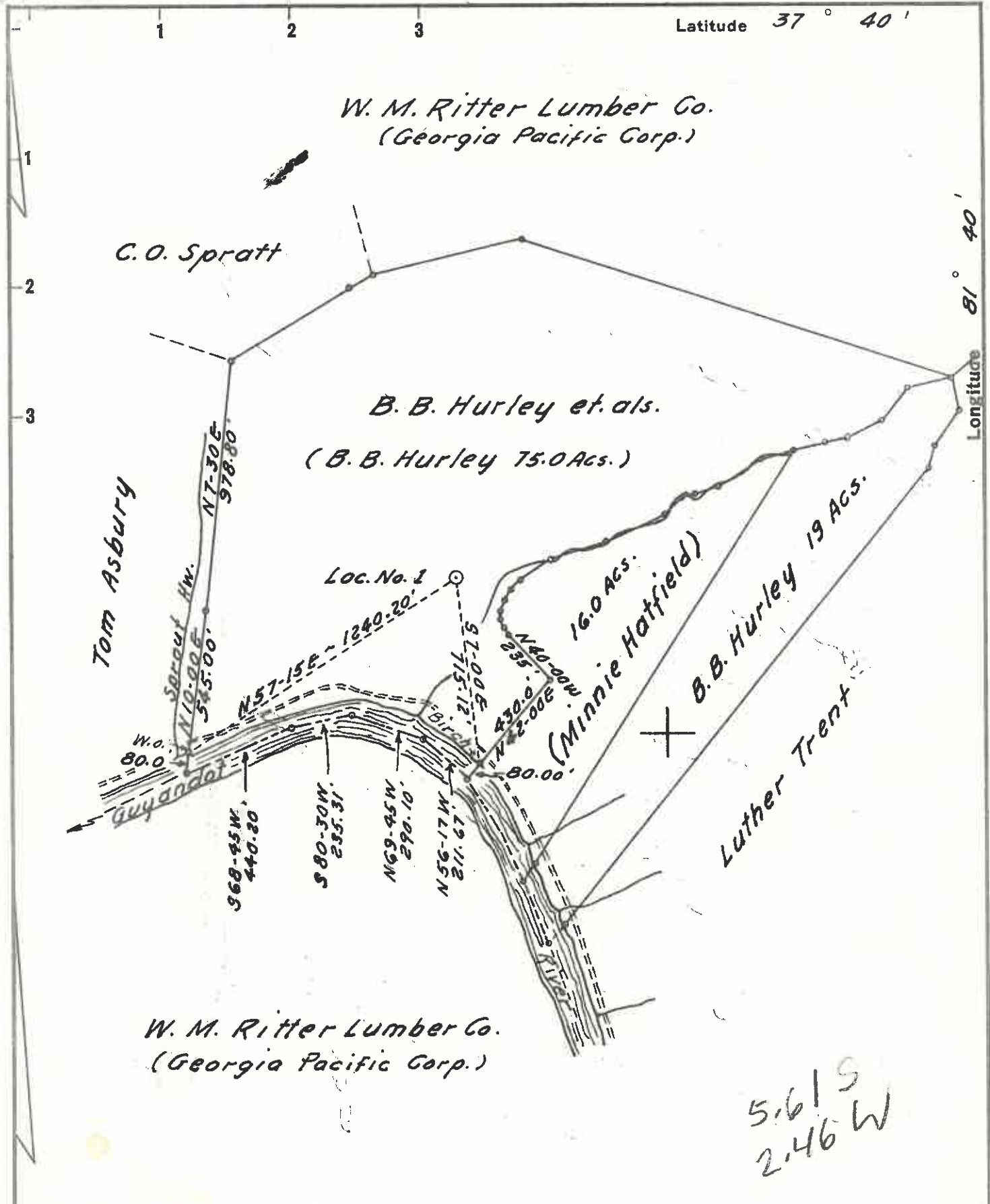


FM



New Location
 Drill Deeper
 Abandonment

Company United Producing Co. Inc.
 Address Charleston, W. Va.
 Farm B. B. Hurley et. als.
 Tract _____ Acres 110.0 Lease No. 4573
 Well (Farm) No. 1 Serial No. 3350
 Elevation (Spirit Level) 1243.00 Gr.
 Quadrangle Pineville Wc
 County Wyoming District Baileysville
 Engineer John B. Burnett
 Engineer's Registration No. 1442
 File No. 5-A Drawing No. _____
 Date 2 Oct. 1961 Scale 1" = 500'

STATE OF WEST VIRGINIA
 DEPARTMENT OF MINES
 OIL AND GAS DIVISION
 CHARLESTON

WELL LOCATION MAP
 FILE NO. W40-614

+ Denotes location of well on United States Topographic Maps, scale 1 to 62,500, latitude and longitude lines being represented by border lines as shown.

- Denotes one inch spaces on border line of original tracing.



STATE OF WEST VIRGINIA
DEPARTMENT OF MINES
OIL AND GAS DIVISION 16

Quadrangle Pineville

Permit No. WYO-614

WELL RECORD

Oil or Gas Well Rotary
DRY HOLE ✓
(KIND)

Company United Producing Company, Inc.
Address Box 1913, Charleston 27, West Virginia
Farm B. B. Hurley et als Acres 110
Location (waters) Guyandotte River
Well No. 1 (3350) Elev. 1253 ^{KB} _{ET.}
District Baileysville County Wyoming
The surface of tract is owned in fee by B. B. Hurley et als
Address Bradshaw, W. Va.
Mineral rights are owned by Same
Address _____

Drilling commenced November 1, 1961
Drilling completed November 12, 1961
Date Shot _____ From _____ To _____
With _____
Open Flow /10ths Water in _____ Inch
/10ths Merc. in _____ Inch
Volume _____ Cu. Ft.
Rock Pressure _____ lbs. _____ hrs.
Oil _____ bbls., 1st 24 hrs.
WELL ACIDIZED _____

Casing and Tubing	Used in Drilling	Left in Well	Packers
Size			Kind of Packer _____
13 3/8"	32'	32'	
10 5/8"	1371'	1371'	Size of _____
6 5/8"			Depth set _____
5 3/16"			
4 1/2"	3585'	3585'	Perf. top <u>See note</u>
2"			Perf. bottom _____
Liners Used			Perf. top _____
			Perf. bottom _____

CASING CEMENTED ^{13 3/8"} 8 5/8" SIZE ^{25 SACKS} 271' No. Ft. 11-7-61 Date
^{4 1/2"} 635'

COAL WAS ENCOUNTERED AT _____ FEET _____ INCHES
_____ FEET _____ INCHES FEET _____ INCHES
_____ FEET _____ INCHES FEET _____ INCHES

WELL FRACTURED See note

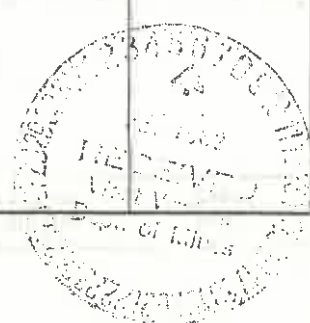
RESULT AFTER TREATMENT

ROCK PRESSURE AFTER TREATMENT

Fresh Water 53 Feet Salt Water _____ Feet

Formation	Color	Hard or Soft	Top	Bottom	Oil, Gas or Water	Depth	Remarks
Surface Stone			0	32			
Shale		Shelly	32	175	Water	53'	
Sand			175	470			
Sandy Shale			470	505			
Sand			505	1326			
Sandy Shale			1326	1345			
Sand & Lime			1345	1370			
Sand			1370	1460			
Lime & Shale			1460	1630			
Ravencliff Sand			1630	1710			
Shale	Red		1710	1760			
Shale	Gray		1760	1801			
Shale & Shells			1801	1855			
Shale	Gray		1855	1900			
Shale	Red		1900	1985			
Shale & Shells			1985	2050			
Maxton Sand			2050	2154			
Shale			2154	2417			
Big Lime			2417	2920			
Shale & Siltstone			2920	3488	Gas	3400'	10/10 W 1" 33MCF
Berea Sand			3488	3535	Gas	3545'	10/10 W 1" 33MCF
Devonian Shale			3535	3585			
TOTAL DEPTH				3585'			

All measurements from Kelly Bushing



Formation	Color	Hard or Soft	Top 16	Bottom	Oil, Gas or Water	Depth Found	Remarks
Note:							
12-1-61 Perforated $\frac{1}{8}$ " casing 3430-3520' with 4 shots per foot.							
12-1-61 Fractured Berea Sand with 500 gals. mud acid, 585 bbls. treated water and 36,000 lbs. sand. No results after fracture.							
1-16-62 Squeezed with 70 sacks cement with FLAC.							
1-23-62 Used abrasijet to notch formation at 3503'. Jetted 55 minutes. Fractured with 600 bbls. treated water, 26,000 lbs. sand and 500 gals. mud acid. No results after fracture.							



Date February 5, 19 62

APPROVED UNITED PRODUCING COMPANY, INC., Owner

By _____ Vice (Title) President