

WW-7
8-30-06

RECEIVED
Office Of Oil and Gas

DEC 12 2024

WV Department of
Environmental Protection



West Virginia Department of Environmental Protection
Office of Oil and Gas
WELL LOCATION FORM: GPS

API: 4710901328 WELL NO.: GEORGIA PACIFIC CORP WP-239

FARM NAME: Forest Land Group

RESPONSIBLE PARTY NAME: Diversified Production, LLC

COUNTY: Wyoming DISTRICT: Slab Fork

QUADRANGLE: Matheny 7.5'

SURFACE OWNER: Lyme Mountaineer Timberlands II, LLC

ROYALTY OWNER: Penn Virginia Oil & Gas Corporation

UTM GPS NORTHING: 4175564.11

UTM GPS EASTING: 454986.69 GPS ELEVATION: 2782.47'

The Responsible Party named above has chosen to submit GPS coordinates in lieu of preparing a new well location plat for a plugging permit or assigned API number on the above well. The Office of Oil and Gas will not accept GPS coordinates that do not meet the following requirements:

1. Datum: NAD 1983, Zone: 17 North, Coordinate Units: meters, Altitude: height above mean sea level (MSL) – meters.
2. Accuracy to Datum – 3.05 meters
3. Data Collection Method:

Survey grade GPS : Post Processed Differential

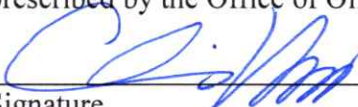
Real-Time Differential

Mapping Grade GPS : Post Processed Differential

Real-Time Differential

4. **Letter size copy of the topography map showing the well location.**

I the undersigned, hereby certify this data is correct to the best of my knowledge and belief and shows all the information required by law and the regulations issued and prescribed by the Office of Oil and Gas.


Signature

Chris Veazey - Director of Administration
Title

11/21/2024
Date

12/20/2024



Diversified Gas & Oil Corporation
100 Diversified Way
Pikeville KY, 41051

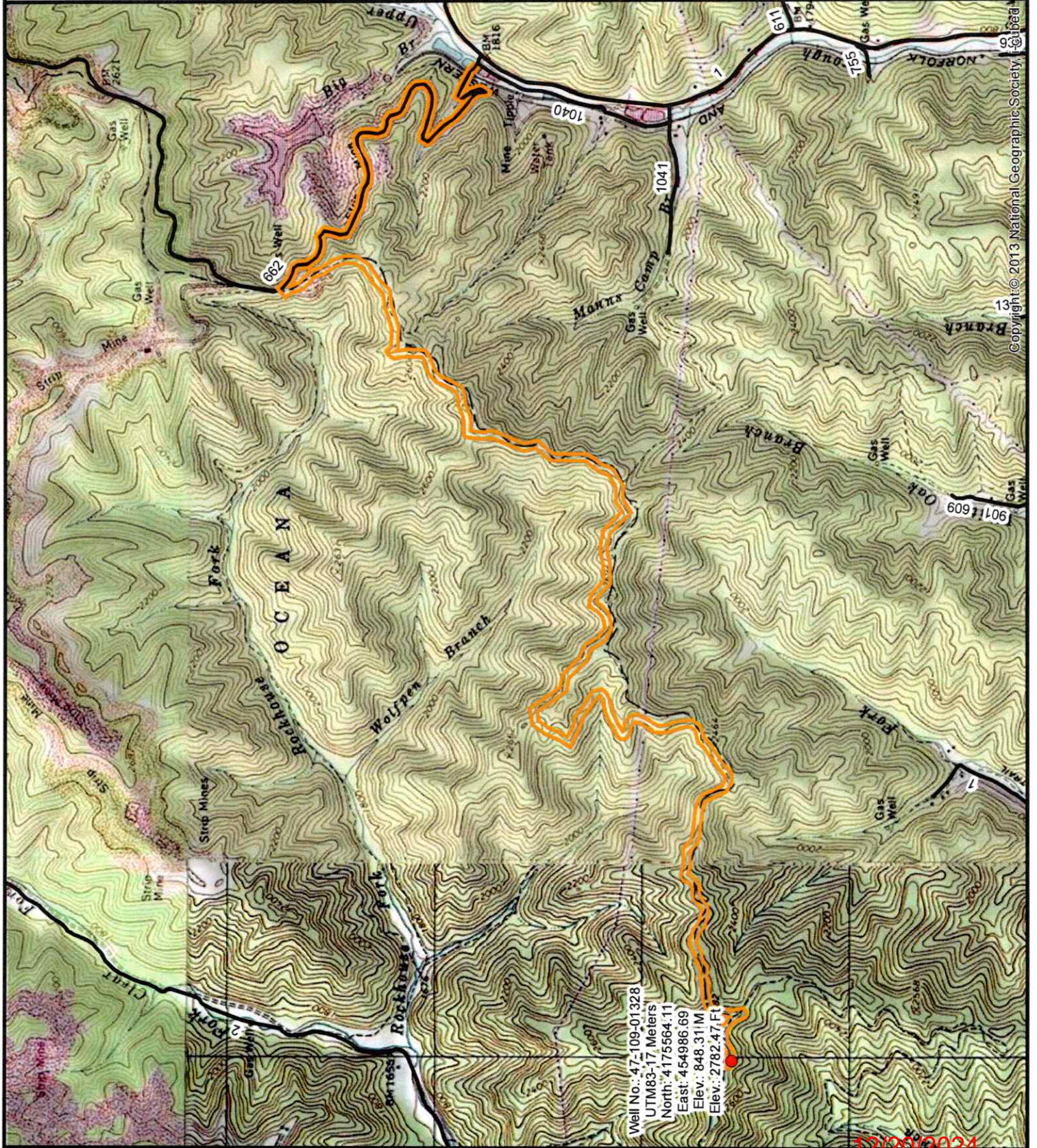
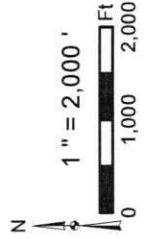
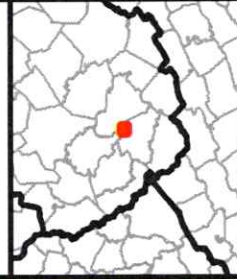
47-109-01328

Well Plugging Map

Legend

- Well
- ▬ Access Road
- ▨ Pits
- ▭ Pad
- Public Roads

RECEIVED
Office Of Oil and Gas
DEC 12 2024
WV Department of
Environmental Protection



12/26/2024

Copyright © 2013 National Geographic Society



Diversified Gas & Oil Corporation
 100 Diversified Way
 Pikeville KY, 41051

47-109-01328

Well Plugging Map

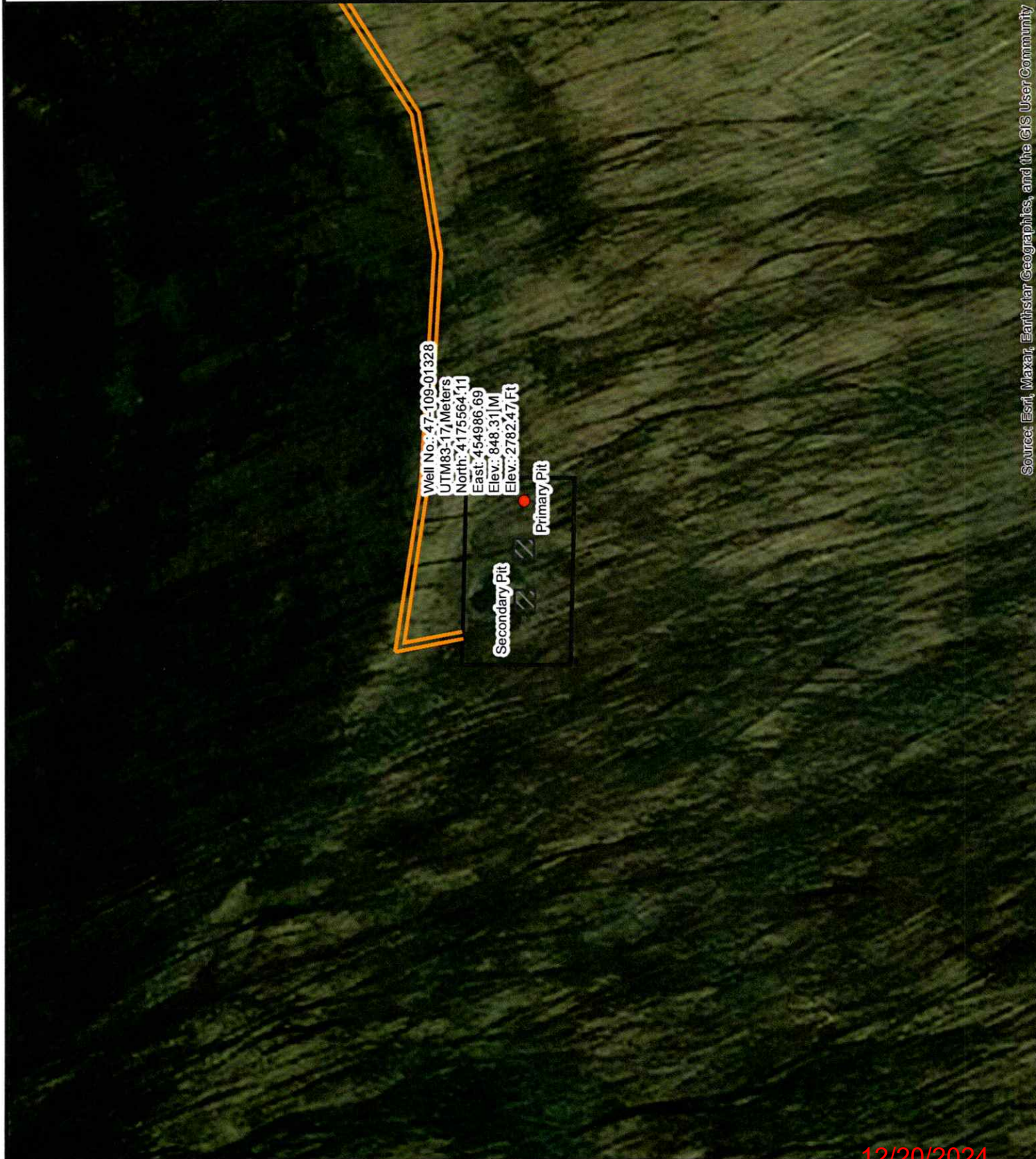
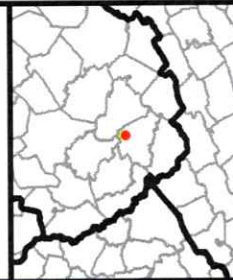
Legend

- Well
- Access Road
- Pits
- Pad
- Public Roads

RECEIVED
 Office Of Oil and Gas

DEC 12 2024

WV Department of
 Environmental Protection



Source: Esri, Maxar, Earthstar Geographics, and the GIS User Community

12/20/2024