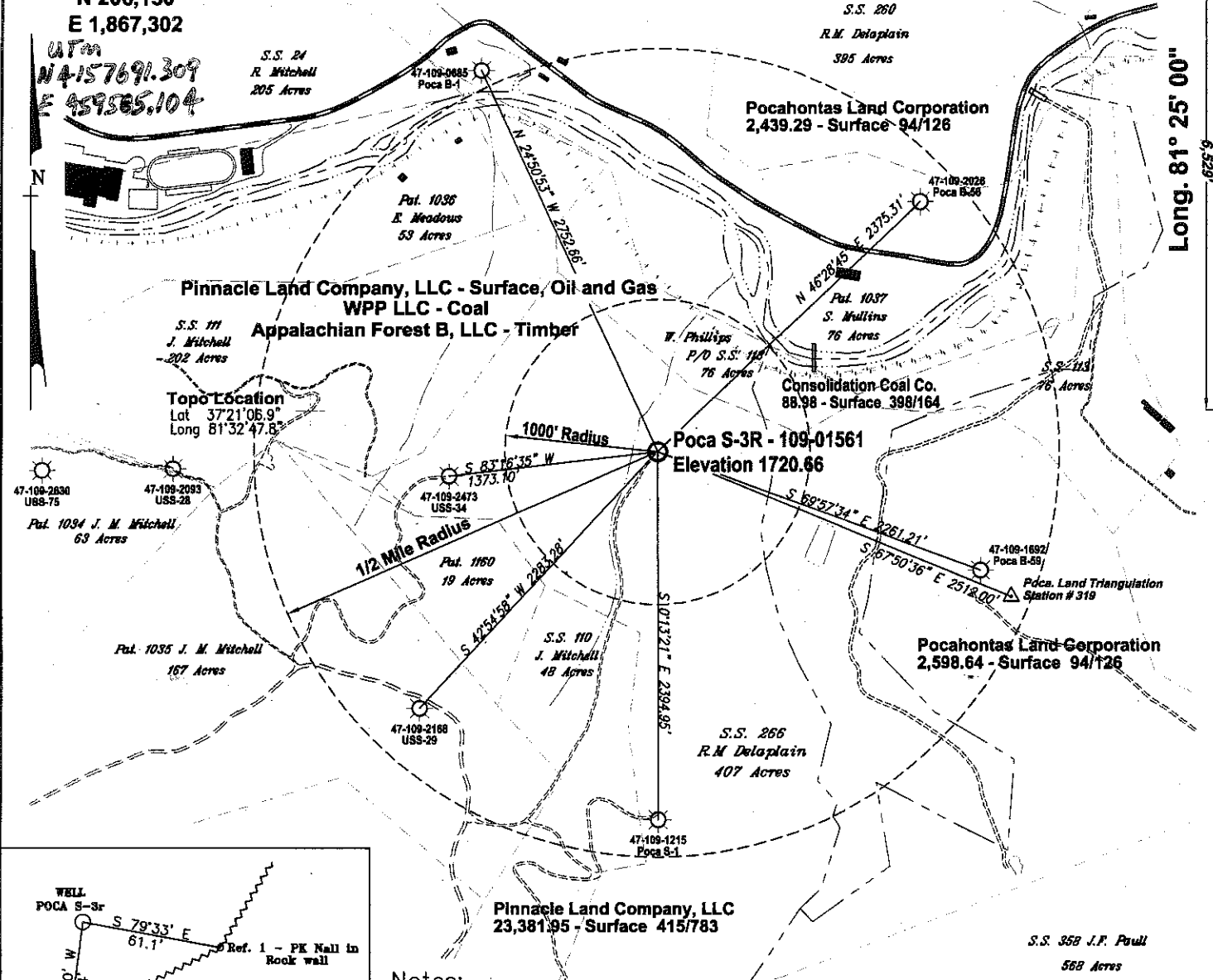


WV State Plane South
 NAD 27 - US Feet
 N 206,150
 E 1,867,302

11,954'

Lat. 37° 35' 00"

Long. 81° 25' 00"



Topo Location
 Lat 37°21'06.9"
 Long 81°32'47.8"

47-109-2630
 US8-75
 Pat. 1034 J. M. Mitchell
 63 Acres

S.S. 111
 J. Mitchell
 202 Acres

Pinnacle Land Company, LLC - Surface, Oil and Gas
 WPP LLC - Coal
 Appalachian Forest B, LLC - Timber

Pocahontas Land Corporation
 2,439.29 - Surface 94/126

Consolidation Coal Co.
 88.98 - Surface 398/164

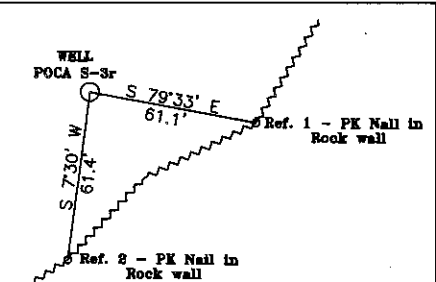
Poca S-3R - 109-01561
 Elevation 1720.66

Pocahontas Land Corporation
 2,598.64 - Surface 94/126

S.S. 266
 R.M. Delaplain
 407 Acres

Pinnacle Land Company, LLC
 23,381.95 - Surface 415/783

S.S. 358 J.F. Pull
 568 Acres




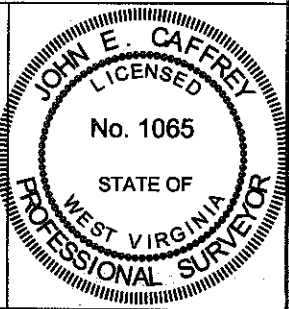
REFERENCES
 Not to Scale

Notes:
 No Dwellings exist within 200 feet of Poca S-3r
 No Domestic Wells within 1000' of Gas Well Poca S-3r
 (+) Denotes location of well on USGS map.
 Property Information taken from McDowell Co. Tax Records
 Pocahontas Land Corporation Tract Lines



FILE No. CABOT OIL AND GAS
 DIRECTORY C:\CABOT2012\Poca_S-3r
 DRAWING NAME PlatS-3r.dwg
 SCALE 1" = 1000'
 MINIMUM DEGREE OF ACCURACY 1 : 2500
 PROVEN SOURCE OF ELEVATION GPS GLOBAL POSITIONING SYSTEM (Sub meter accuracy)

I THE UNDERSIGNED, HEREBY CERTIFY THAT THIS PLAT IS CORRECT TO THE BEST OF MY KNOWLEDGE AND BELIEF AND SHOWS ALL THE INFORMATION REQUIRED BY LAW AND THE REGULATIONS ISSUED AND PRESCRIBED BY THE DEPARTMENT OF MINES.
 (SIGNED) 
 R.P.E. _____ R.P.S. 1065



STATE OF WEST VIRGINIA
 DEPARTMENT OF ENVIRONMENTAL PROTECTION
 OFFICE OF OIL AND GAS
 CHARLESTON, WV

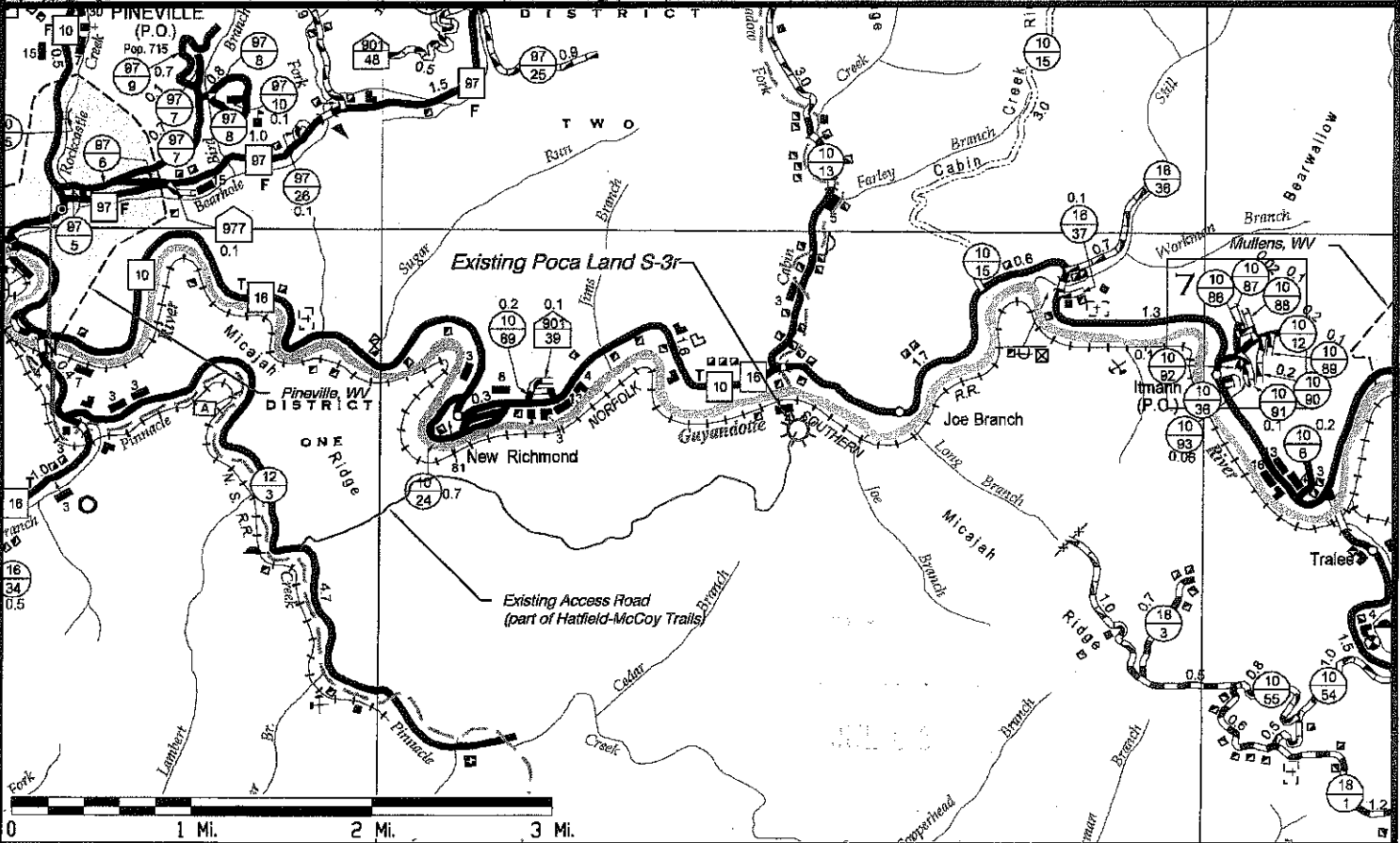
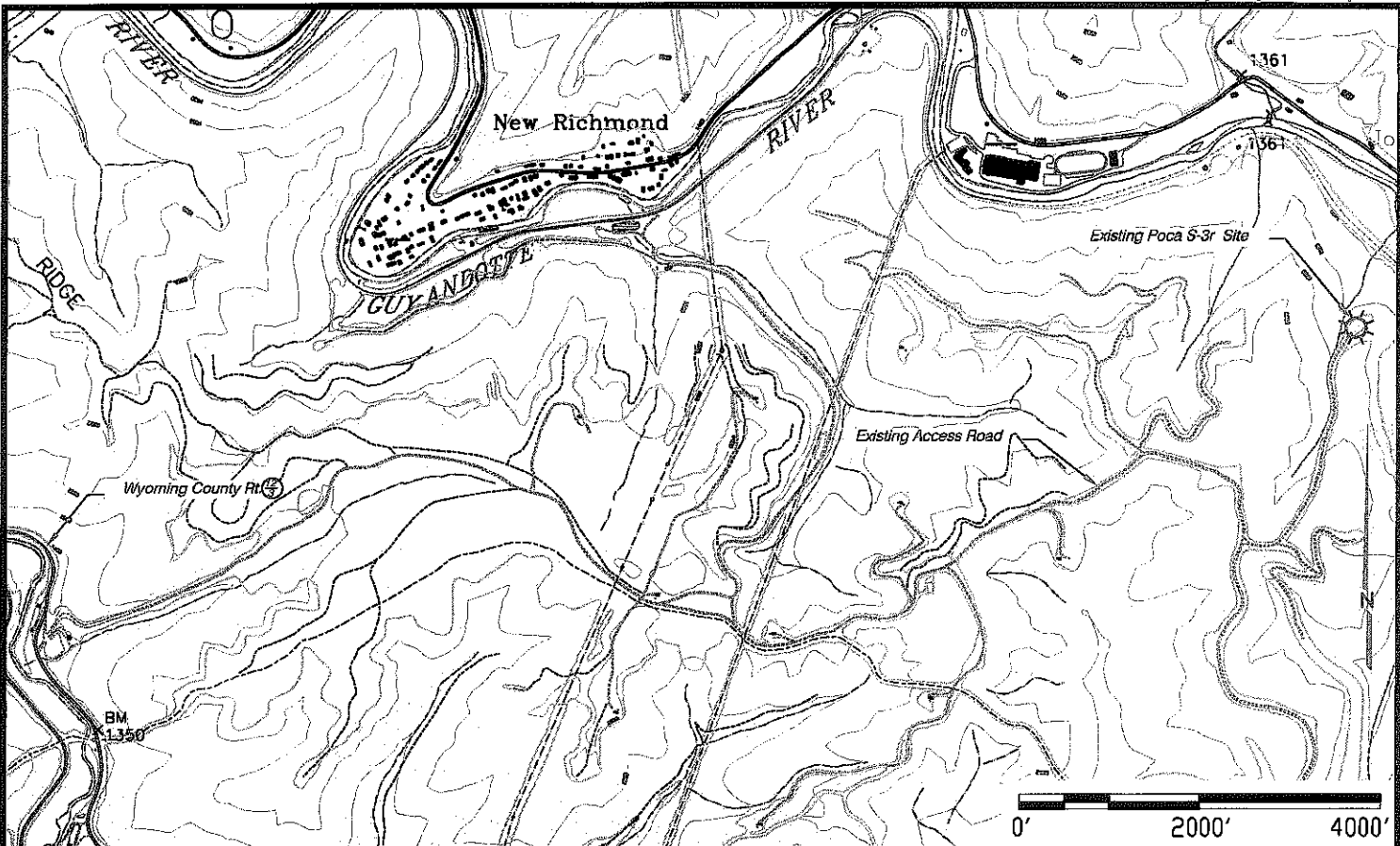



DATE MAY 15, 2012
 OPERATOR'S WELL No. POCA S-3r
47 - 109 - 01561
 API WELL No. STATE COUNTY PERMIT

WELL TYPE: OIL GAS LIQUID INJECTION WASTE DISPOSAL
 (IF "GAS") PRODUCTION STORAGE DEEP SHALLOW
 LOCATION: ELEVATION 1720.66 WATER SHED UNNAMED TRIBUTARY OF THE GUYANDOTTE RIVER
 DISTRICT BARKERS RIDGE COUNTY WYOMING
 QUADRANGLE MULLENS, WV 7 1/2' SERIES
 SURFACE OWNER PINNACLE LAND COMPANY, LLC ACREAGE 16,296.43 (Tax Map 124, Parcel P/O 135-1)
 ROYALTY OWNER PINNACLE LAND COMPANY, LLC LEASE ACREAGE 20,159.89
 LEASE No. 47-9237
 PROPOSED WORK: DRILL CONVERT DRILL DEEPER REDRILL FRACTURE OR STIMULATE PLUG OFF OLD FORMATION PERFORATE NEW FORMATION OTHER PHYSICAL CHANGE IN WELL (SPECIFY)
 PLUG AND ABANDON CLEAN OUT AND REPLUG _____
 TARGET FORMATION BIG LIME, WEIR, GORDON ESTIMATED DEPTH 3,826'
 WELL OPERATOR CABOT OIL & GAS CORP. DESIGNATED AGENT BRYAN HALL
 ADDRESS FIVE PENN CENTER WEST, SUITE 401 ADDRESS PO BOX 260
PITTSBURGH, PA 15276 DANVILLE, WV 25053

07/27/2012

109.01561P



 Cabot Oil & Gas Corporation

Poca Land S-3r Location Map - May 15, 2012
 Located near New Richmond, WV in Barkers Ridge District of Wyoming County

07/27/2012