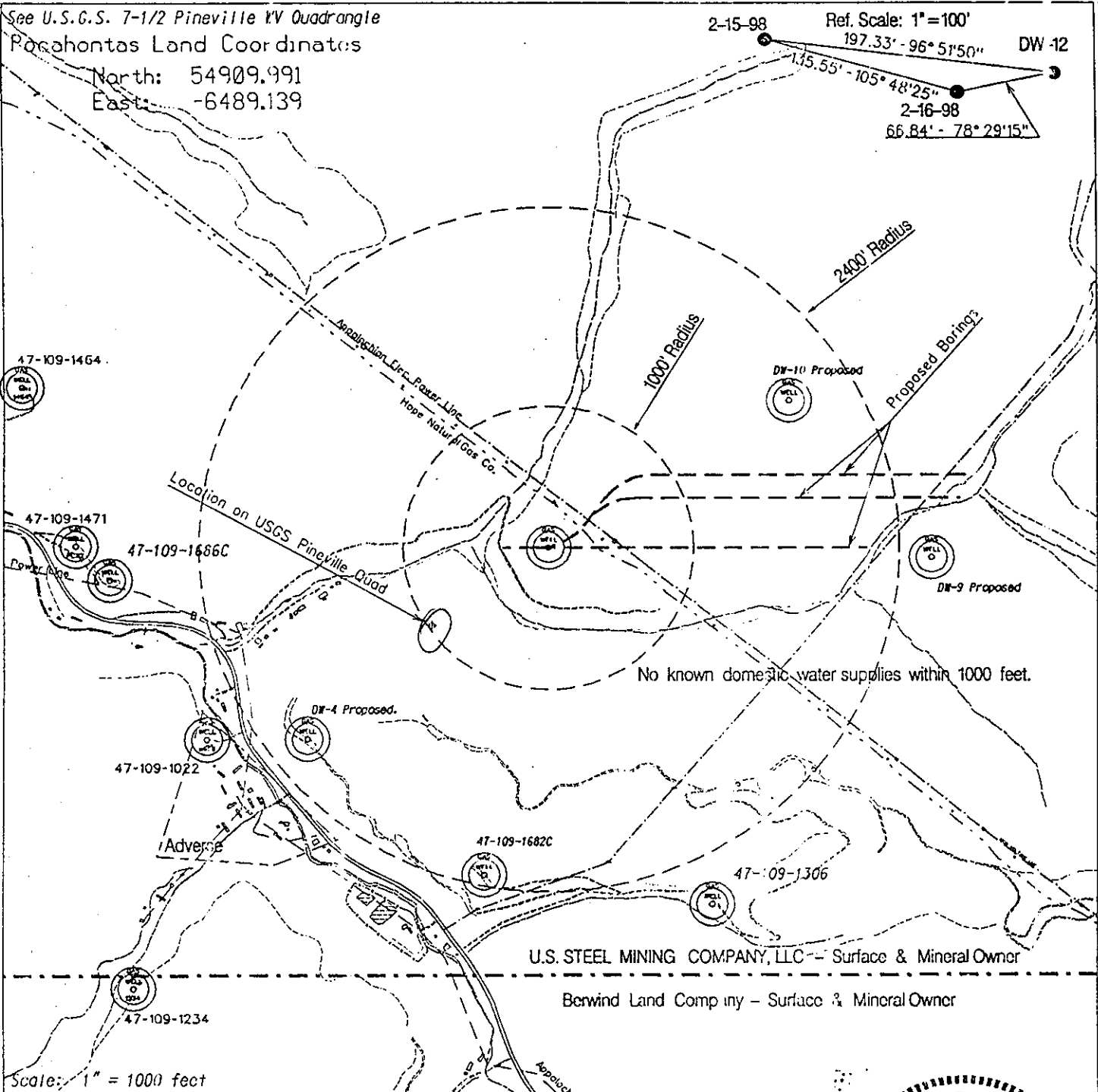


9100' on USGS 37° 32' 30"

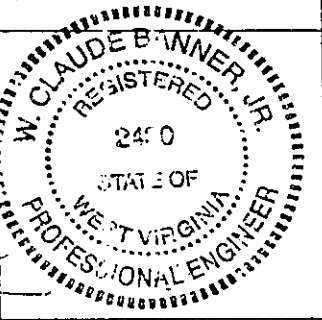
See U.S.G.S. 7-1/2 Pineville KV Quadrangle
 Pocahontas Land Coordinates
 North: 54909.991
 East: -6489.139



81° 32' 30"
 8750' on USGS

FILE No. USM-TD-40\gn\plot_files
 DRAWING No. O&G-DW-12.dgn
 SCALE 1" = 1000'
 MINIMUM DEGREE OF ACCURACY 1:2500
 PROVEN SOURCE OF ELEVATION USC&GS BM F44 el. 1565

I THE UNDERSIGNED, HEREBY CERTIFY THAT THIS PLAT IS CORRECT TO THE BEST OF MY KNOWLEDGE AND BELIEF AND SHOWS ALL THE INFORMATION REQUIRED BY LAW AND THE REGULATIONS ISSUED AND PRESCRIBED BY THE DEPARTMENT OF MINES
 (SIGNED) *W. Claude B. Wanner, Jr.*
 R.P.E. 240 R.P.S.



STATE OF WEST VIRGINIA
 DIVISION OF ENVIRONMENTAL PROTECTION
 OFFICE OF OIL AND GAS
 NITRD, WV

Date: February 19, 1998
 Operator's Well No. DW-12

WELL TYPE: OIL GAS XX LIQUID INJECTION
 (IF 'GAS') PRODUCTION XX STORAGE DEEP SHALLOW CBM XX
 LOCATION: ELEVATION: 1567.67 WATERSHED: Nancy Fk/Indian Ck/Guyandotte Rr
 DISTRICT: Center COUNTY: Wyoming
 QUADRANGLE: USGS Pineville WV Quadrangle
 SURFACE OWNER U.S. STEEL MINING COMPANY, LLC ACREAGE 37977.66
 OIL & GAS ROYALTY OWNER U.S. STEEL MINING COMPANY, LLC LEASE ACREAGE
 LEASE NO.
 PROPOSED WORK: DRILL (CONVERT XX DRILL DEEPER REDRILL FRACTURE OR STIMULATE PLUG OFF OLD FORMATION PERFORATE NEW FORMATION OTHER PHYSICAL CHANGE IN WELL (SPECIFY)
 PLUG AND ABANDON CLEANOUT AND REPLUG
 TARGET FORMATION Pocahontas No.3 ESTIMATED DEPTH 780.57
 WELL OPERATOR U.S. Steel Mining Company, LLC DESIGNATED AGENT Joseph A Zupanick
 ADDRESS P.O. Box 338 ADDRESS P.O. Box 338
Pineville WV 24874 Pineville WV 24874

API Well No. 47-109-01709P
 State County Permit

COUNTY NAME WYO
 PERMIT 1709P

JAN 04 1999

✓ 37 32 30

Latitude

81 32 30

Longitude

+ 1.665
1.73

Topo Location

7.5' Loc. _____ 15' Loc. _____
_____ (calc.) _____

Company US Steel Mining
Farm US Steel Mining
15' Quad _____
(sec.)
7.5' Quad Pineville
District Center

WELL LOCATION PLAT

County 109 Permit 1709

6-6 272

WR-35

18-May-98
API # 47-109-01709

State of West Virginia
Division of Environmental Protection
Section of Oil & Gas

Reviewed MS

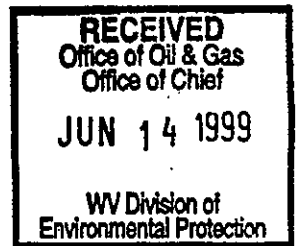
Well Operator's Report of Well Work

Farm name: U.S. Steel Mining Company, LLC Operator Well No: DW-12

Location: Elevation: 1567.67 Quadrangle: PINEVILLE

District: CENTER County: WYOMING

Latitude: 8750 Feet South of 37 Deg. 32 Min. 30 Sec.
Longitude: 9100 Feet West of 81 Deg. 32 Min. 30 Sec.



Company: U.S. STEEL MINING COMPANY LLC
P.O. Box 338
Pineville, WV 24874-0338

Agent: Dave Trader

Inspector: OFIE HELMICK
Permit Issued: 04/01/98
Well Work commenced: 03/17/98
Well Work completed: 03/22/98
Verbal plugging
Permission granted on:
Rotary x Cable _____ Rig _____
Total depth (ft) 717
Fresh water depths (ft) N/A
Salt water depths (ft) N/A
Is coal being mined in the area (Y/N)? Y
Coal depths (ft): 712 - 717

| Casing & Tubing Size | Used in Drilling | Left in Well | Cement Fill up |
|----------------------|------------------|--------------|----------------|
| 16" | 20' | 20' | 15.7 cu. ft. |
| 11 3/4" | 11 3/4" - 610' | 610' | 289 Cu. Ft. |
| 8 5/8" | 818' | | |
| 1" | 819' | | |

OPEN FLOW DATA

Producing formation Pocahontas No. 4 Seam Pay zone depth (ft) 712 - 717
 Gas: Initial open flow N/A Mcf/d Oil: Initial open flow _____ Bbl/d
 Final open flow N/A Mcf/d Final open flow _____ Bbl/d
 Time of open flow between initial and final tests: _____ hours
 Static rock pressure _____ psig (surface pressure) after _____ hours

Second Producing formation _____ Pay zone depth (ft) _____
 Gas: Initial open flow N/A Mcf/d Oil: Initial open flow _____ Bbl/d
 Final open flow N/A Mcf/d Final open flow _____ Bbl/d
 Time of open flow between initial and final tests: _____ hours
 Static rock pressure _____ psig (surface pressure) after _____ hours

Note: ON BACK OF THIS FORM, PUT THE FOLLOWING: 1) DETAILS OF PERFORATED INTERVALS, FRACTURING OR STIMULATING, PHYSICAL CHANGE, ETC. 2) THE WELL LOG WHICH IS A SYSTEMATICK DETAILED GEOLOGICAL RECORD OF ALL FORMATIONS, INCLUDING COAL ENCOUNTERED BY THE WELLBORE.

For: U.S. Steel Mining Company, LLC
By: Dave Trader
Date: 6/7/99

JUN 22 1999

WYO 1709

Operator: DW-12
API No. 47-109-01709 C
Location: Pineville

Details of Perforated Intervals, Fracturing or Stimulation, Physical Change, Etc.

Well Log & Geologic Record

| Formation | Top | Bottom |
|-------------|------|--------|
| Sandstone | 0 | 235' |
| Sandy Shale | 235' | 300' |
| Sandstone | 300' | 380' |
| Shaley Sand | 380' | 475' |
| Sandstone | 475' | 525' |
| Quartz Sand | 525' | 610' |
| Sandstone | 610' | 655' |
| Shaley Sand | 655' | 685' |
| Sandstone | 685' | 712' |
| Coal P-4 | 712' | 717' |

