

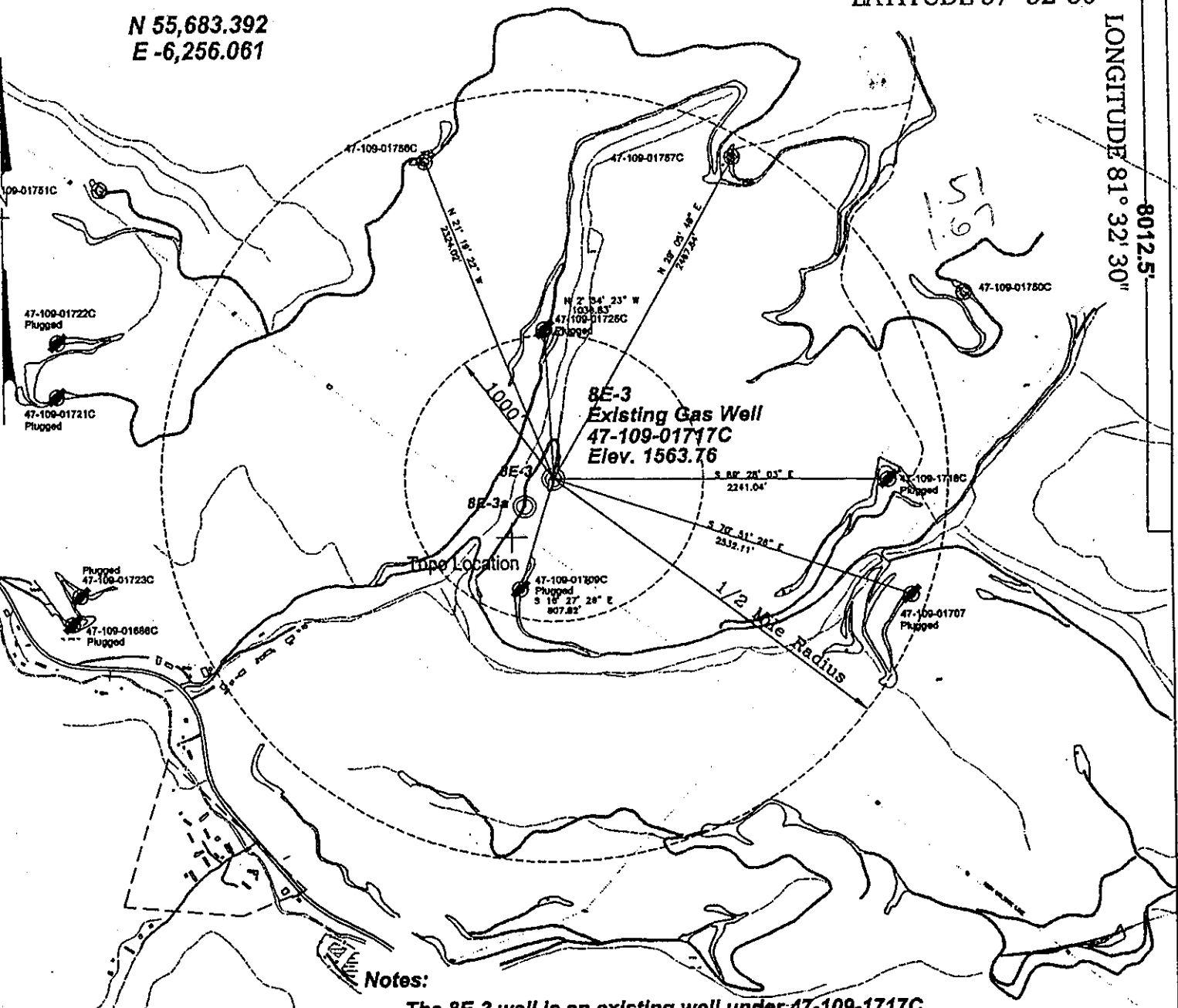
POCAHONTAS LAND COORDINATES

N 55,683.392
E -6,256.061

8852.5'

LATITUDE 37° 32' 30"

LONGITUDE 81° 32' 30"



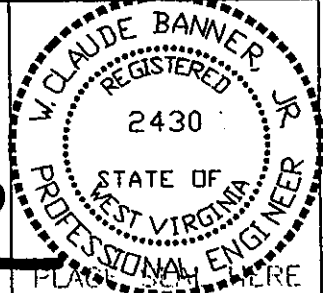
Notes:

- The 8E-3 well is an existing well under 47-109-1717C
- The 8E-3a well will be plugged.
- No known domestic water supplies within 1000 feet.
- (+) Denotes location of well on USGS map.

FILE No. US-STEEL
DRAWING NAME DAVE-TRADER\PLAT
FILE NAME 8E-3
SCALE 1" = 1000'
MINIMUM DEGREE OF ACCURACY 1 : 2500
PROVEN SOURCE OF ELEVATION BENCH-MARK
F-44 EL. 1565

I THE UNDERSIGNED, HEREBY CERTIFY THAT THIS PLAT IS CORRECT TO THE BEST OF MY KNOWLEDGE AND BELIEF AND SHOWS ALL THE INFORMATION REQUIRED BY LAW AND THE REGULATIONS ISSUED AND PRESCRIBED BY THE DEPARTMENT OF MINES.

(SIGNED) W. Claude Banner, Jr.
R.P.E. 2430 R.P.S. _____



**STATE OF WEST VIRGINIA
DIVISION OF ENVIRONMENTAL PROTECTION
OFFICE OF OIL AND GAS
NITRO, WV**

DATE MARCH 28, 2001
OPERATOR'S WELL No. 8E-3
API WELL No. 47 - 109 - 01717C W
STATE COUNTY PERMIT

WELL TYPE: OIL GAS CBM LIQUID INJECTION WASTE DISPOSAL
(IF "GAS") PRODUCTION X STORAGE DEEP SHALLOW
LOCATION: ELEVATION 1563.76 WATER SHED UNNAMED TRIBUTARY OF LICK BRANCH OF INDIAN CREEK
DISTRICT CENTER COUNTY WYOMING
QUADRANGLE PINEVILLE, WV

SURFACE OWNER U.S. STEEL MINING COMPANY, LLC ACREAGE 37977.66
CBM ROYALTY OWNER U.S. STEEL MINING COMPANY, LLC LEASE ACREAGE _____

LEASE No. _____
PROPOSED WORK: DRILL ___ CONVERT ___ DRILL DEEPER ___ REDRILL ___ FRACTURE OR STIMULATE X PLUG OFF OLD FORMATION X PERFORATE NEW FORMATION ___ OTHER PHYSICAL CHANGE IN WELL (SPECIFY) _____

PLUG AND ABANDON ___ CLEAN OUT AND REPLUG ___
TARGET FORMATION POCAHONTAS NO. 4 AND NO. 6 SEAMS ESTIMATED DEPTH 830'
WELL OPERATOR U.S. STEEL MINING COMPANY, LLC DESIGNATED AGENT DAVE TRADER
ADDRESS P.O. BOX 338 ADDRESS P.O. BOX 338
PINEVILLE, WV 24874 PINEVILLE, WV 24874

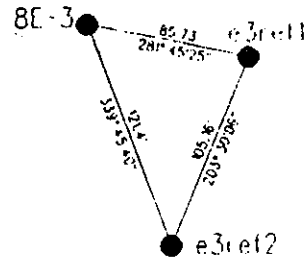
MAY 11 2001

WYO 1717CW

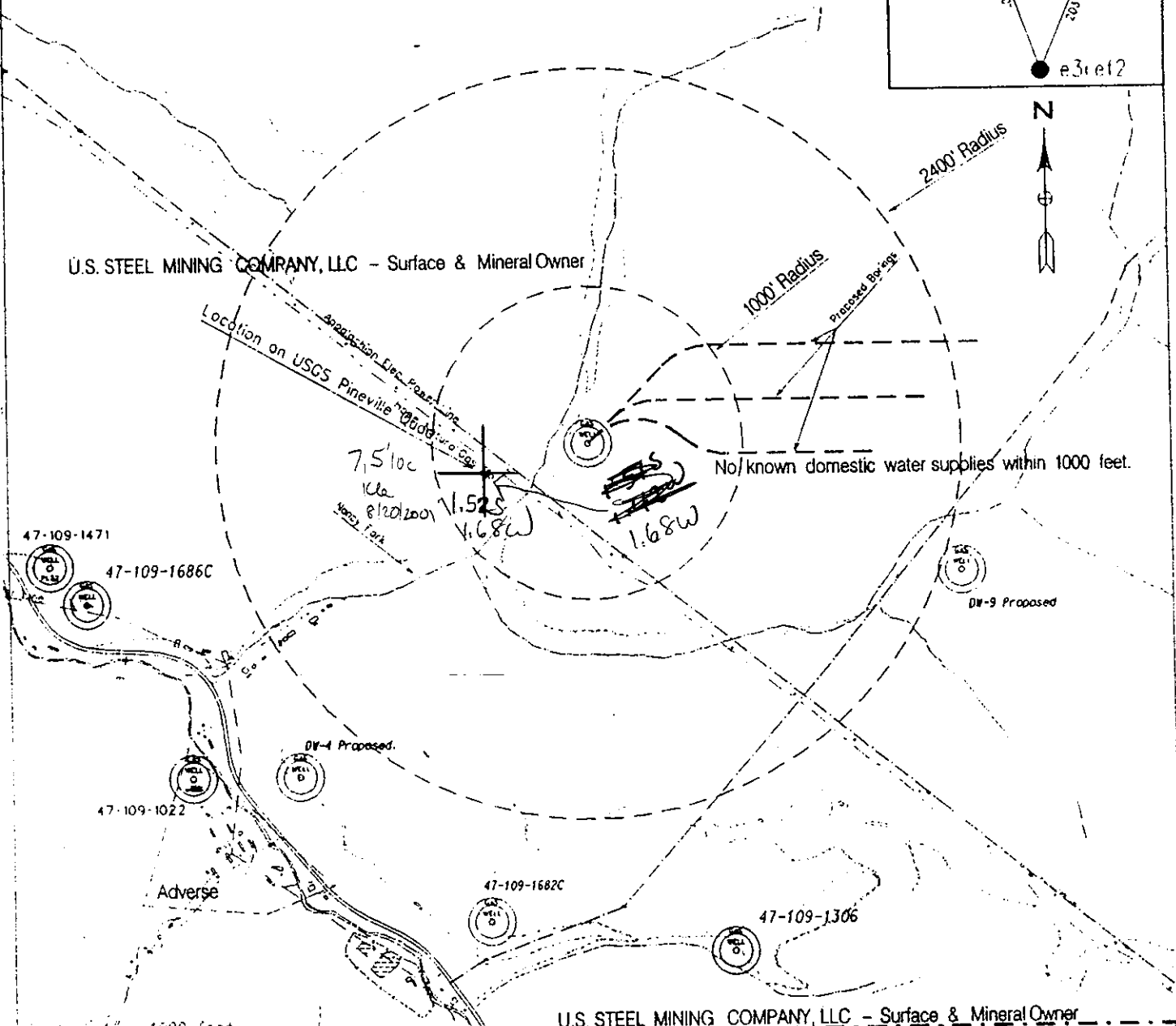
See U.S.G.S. 7-1/2 Pineville WV Quadrangle
Pocahontas Land Coordinates

North: 55684.149
East: -6256.260

Reference Scale: 1" = 100'

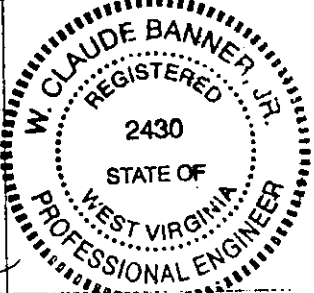


81' 32' 30"



Scale: 1" = 1000 feet
FILE No. USM TD: 40\dgn\jd\plot_files
DRAWING No. USG_8E-3.dgn
SCALE: 1" = 1000'
MINIMUM DEGREE OF ACCURACY: 1:2500
PROVEN SOURCE OF ELEVATION: USC&GS BM F44
e1. 1565

I THE UNDERSIGNED, HEREBY CERTIFY THAT THIS PLAT IS CORRECT TO THE BEST OF MY KNOWLEDGE AND BELIEF AND SHOWS ALL THE INFORMATION REQUIRED BY LAW AND THE REGULATIONS ISSUED AND PRESCRIBED BY THE DEPARTMENT OF MINES
(SIGNED) *W. Claude Banner Jr.*
R.P.E. R.P.S.



STATE OF WEST VIRGINIA
DIVISION OF ENVIRONMENTAL PROTECTION
OFFICE OF OIL AND GAS
MTRU, WV

Date: March 22, 1998
Operator's Well No. 8E-3

WELL TYPE: OIL GAS XX LIQUID INJECTION
(IF "GAS") PRODUCTION XX STORAGE DEEP SHALLOW CPM XX
LOCATION: ELEVATION: 1563.76 WATERSHED: Nancy Fork/Indian Creek/Guyandotte River
DISTRICT: Center District COUNTY: Wyoming
QUADRANGLE: USGS Pineville WV Quadrangle
SURFACE OWNER U.S. STEEL MINING COMPANY, LLC ACREAGE 37977.66
OIL & GAS ROYALTY OWNER U.S. STEEL MINING COMPANY, LLC LEASE ACREAGE
LEASE NO. _____

API Well No. 47109 01717C
State County Permit

PROPOSED WORK: DRILL XX CONVERT DRILL DEEPER REDRILL FRACTURE OR STIMULATE PLUG OFF OLD FORMATION PERFORATE NEW FORMATION OTHER PHYSICAL CHANGE IN WELL (SPECIFY)

PLUG AND ABANDON CLEANDOUT AND REPLUG

TARGET FORMATION Pocahontas No.3 ESTIMATED DEPTH 776.2

WELL OPERATOR U.S. Steel Mining Company, LLC DESIGNATED AGENT Joseph A. Zupanic
ADDRESS P.O. Box 338 ADDRESS P.O. Box 338

APR 27 1998

Pineville WV 24874 6-6-0 Pineville WV 24874

WYO 1717C

State of West Virginia
Department of Environmental Protection
Office of Oil and Gas

Well Operator's Report of Well Work

Farm name: U. S. Steel Mining Company, Inc. Operator Well No.: 8E-3 Rework

LOCATION: Elevation: 1563.76 Quadrangle: Pineville

District: Center County: Wyoming
Latitude: 8012 Feet South of 37 Deg. 32 Min. 30 Sec.
Longitude 8852 Feet West of 81 Deg. 32 Min. 30 Sec.

Company: U. S. Steel Mining Company, Inc.

	Casing & Tubing	Used in drilling	Left in well	Cement fill up Cu. Ft.
Address: P. O. Box 338	13 3/8"	30'	30'	8 cu. ft.
	8 5/8"	381'	381'	87 cu. ft.
Agent: David Trader	11 3/4"	612'	612'	290 cu. ft.
Inspector: Barry Stollings				
Date Permit Issued: 05/10/01				
Date Well Work Commenced: 04/27/01	8 5/8" C.I. Plug @ 734'			
Date Well Work Completed: 05/10/01	Perforated casing for GOB Gas Production			
Verbal Plugging:	Removed 364' - 8 5/8"			
Date Permission granted on:	Removed 2 7/8" Tubing			
Rotary X Cable Rig				
Total Depth (feet): 830'				
Fresh Water Depth (ft.): N/A				
Salt Water Depth (ft.): N/A				
Is coal being mined in area (N/Y)? Yes				
Coal Depths (ft.): 764' - 768.5'				

OPEN FLOW DATA

Producing formation Pocahontas No. 4 seam Pay zone depth (ft) 734'
Gas: Initial open flow N/A MCF/d Oil: Initial open flow Bbl/d
Final open flow N/A MCF/d Final open flow Bbl/d
Time of open flow between initial and final tests Hours
Static rock Pressure psig (surface pressure) after Hours

Second producing formation Pay zone depth (ft)
Gas: Initial open flow MCF/d Oil: Initial open flow Bbl/d
Final open flow MCF/d Final open flow Bbl/d
Time of open flow between initial and final tests Hours
Static rock Pressure psig (surface pressure) after Hours

NOTE: ON BACK OF THIS FORM PUT THE FOLLOWING: 1). DETAILS OF PERFORATED INTERVALS, FRACTURING OR STIMULATING, PHYSICAL CHANGE, ETC. 2). THE WELL LOG WHICH IS A SYSTEMATIC DETAILED GEOLOGICAL RECORD OF ALL FORMATIONS, INCLUDING COAL ENCOUNTERED BY THE WELLBORE.

Signed: *Donald Gilligan*
By: Trade Line, Inc.
Date: 12/5/05

RECEIVED
Office of Oil & Gas
Office of Chief
DEC 06 2005
WV Department of
Environmental Protection

DEC 09 2005
WYO 1717R

Operator: 8E-3
API No. 47-109-01717
Location: Nancy Fork

Details of Perforated Intervals, Fracturing or Stimulation, Physical Change, Etc.

Well Log & Geologic Record

Formation	Top	Bottom
Sandstone	0'	240'
Sandy Shale	240'	280'
Sandstone	280'	355'
Shaley Sand	355'	410'
Sandy Shale	410'	455'
Sandstone	455'	495'
Quartz Sand	495'	645'
Shale & Coal	645'	650'
Sandy Shale	650'	781'
Coal P-4	701'	705'
Sandy Shale	705'	764'
Coal P-3	764'	768.5'
Shaley Sand	768.5'	830' T.D.

DEC 09 2005

State of West Virginia
Division of Environmental Protection
Section of Oil & Gas

Reviewed ATB

Well Operator's Report of Well Work

Farm name: U.S. Steel Mining Company, LLC Operator Well No: 8E-3
Location: Elevation: 1,563.76 Quadrangle: PINEVILLE
District: CENTER County: WYOMING
Latitude: 8012 Feet South of 37 Deg. 32 Min. 30 Sec.
Longitude: 8852 Feet West of 81 Deg. 32 Min. 30 Sec.

Company: U.S. STEEL MINING COMPANY LLC
P.O. Box 338
Pineville, WV 24874-0338

Agent: Dave Trader

Inspector: OFIE HELMICK
Permit Issued: 04/01/98
Well Work commenced: 04/06/98
Well Work completed: 04/15/98
Verbal plugging
Permission granted on: _____
Rotary x Cable _____ Rig
Total depth (ft) 830'
Fresh water depths (ft) N/A
Salt water depths (ft) N/A
Is coal being mined in the area (Y/N)? Y
Coal depths (ft): 764'-768.5'

Casing & Tubing Size	Used in Drilling	Left in Well	Cement Fill up
16"	15'	15'	11.7Cu. Ft.
11 3/4"	612'	612'	290 Cu. Ft
8 5/8"	745'	745'	22.2 Cu.Ft.

APR 24 2001
Office of Oil & Gas Permitting
WV Division of Environmental Protection

OPEN FLOW DATA

Producing formation Pocahontas No. 3 Seam Pay zone depth (ft) 764 - 768.5'
Gas: Initial open flow N/A Mcf/d Oil: Initial open flow _____ Bbl/d
Final open flow N/A Mcf/d Final open flow _____ Bbl/d
Time of open flow between initial and final tests: _____ hours
Static rock pressure _____ psig (surface pressure) after _____ hours

Second Producing formation _____ Pay zone depth (ft) _____
Gas: Initial open flow N/A Mcf/d Oil: Initial open flow _____ Bbl/d
Final open flow N/A Mcf/d Final open flow _____ Bbl/d
Time of open flow between initial and final tests: _____ hours
Static rock pressure _____ psig (surface pressure) after _____ hours

Note: ON BACK OF THIS FORM, PUT THE FOLLOWING: 1) DETAILS OF PERFORATED INTERVALS, FRACTURING OR STIMULATING, PHYSICAL CHANGE, ETC. 2) THE WELL LOG WHICH IS A SYSTEMATICK DETAILED GEOLOGICAL RECORD OF ALL FORMATIONS, INCLUDING COAL ENCOUNTERED BY THE WELLBORE.

For: Dave Trader
U.S. Steel Mining Company, LLC
By: Dave Trader
Date: 6/1/98

MAY 4 2001

WYO 1717 C

Operator: 8E-3
 API No. 47-109-01717
 Location: Nancy Fork

Details of Perforated Intervals, Fracturing or Stimulation, Physical Change, Etc.

Well Log & Geologic Record

Formation	Top	Bottom
Sandstone	0'	240'
Sandy Shale	240'	280'
Sandstone	280'	355'
Shaley Sand	355'	410'
Sandy Shale	410'	455'
Sandstone	455'	495'
Quartz Sand	495'	645'
Shale & Coal	645'	650'
Sandy Shale	650'	781'
Coal P-4	701'	705'
Sandy Shale	705'	764'
Coal P-3	764'	768.5'
Shaley Sand	768.5'	830' T.D.

BE 2001-007
 Office of Oil & Gas
 Permitting
 APR 24 2001
 WV Division of
 Environmental Protection