

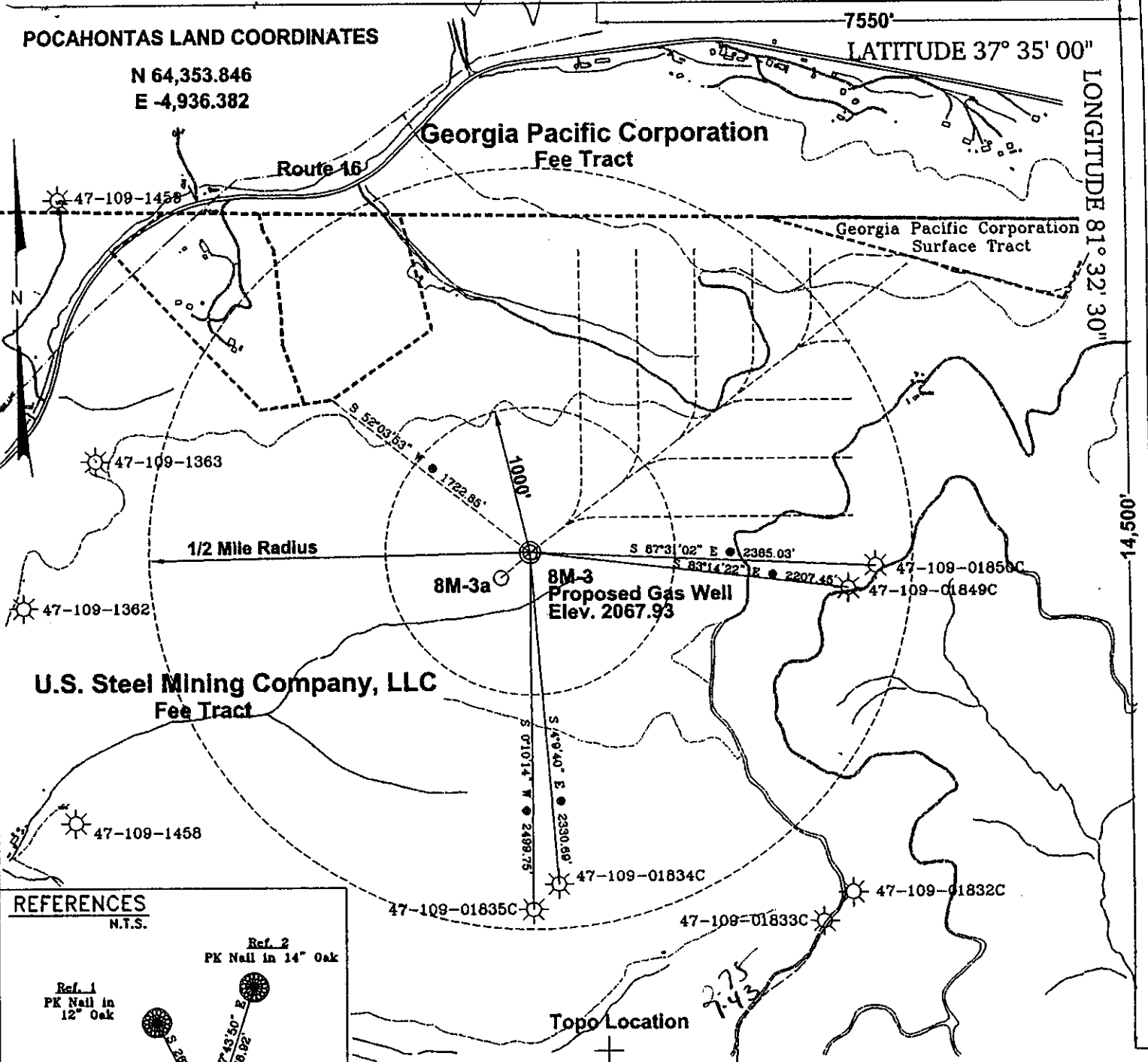
POCAHONTAS LAND COORDINATES

N 64,353.846
E -4,936.382

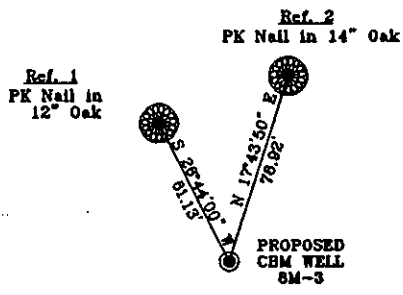
7550'

LATITUDE 37° 35' 00"

LONGITUDE 81° 32' 30"



REFERENCES
N.T.S.



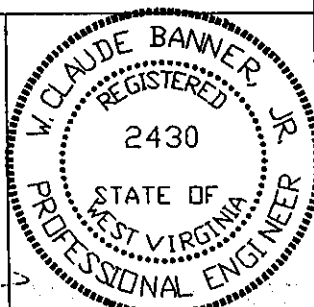
Notes:

No known domestic water supplies within 1000 feet.
(+) Denotes location of well on USGS map.

FILE No. CDX
DRAWING NAME \PLATS\8M-3
Drawing Number 10-11-99-1SP
SCALE 1" = 1000'
MINIMUM DEGREE OF ACCURACY 1 : 2500
PROVEN SOURCE OF ELEVATION USGS B.M. F44
ELEV. 1565

I THE UNDERSIGNED, HEREBY CERTIFY THAT THIS PLAT IS CORRECT TO THE BEST OF MY KNOWLEDGE AND BELIEF AND SHOWS ALL THE INFORMATION REQUIRED BY LAW AND THE REGULATIONS ISSUED AND PRESCRIBED BY THE DEPARTMENT OF MINES.

(SIGNED) *W. Claude Banner Jr.*
R.P.E. 2430 R.P.S.



**STATE OF WEST VIRGINIA
DIVISION OF ENVIRONMENTAL PROTECTION
OFFICE OF OIL AND GAS
NITRO, WV**

DATE OCTOBER 14 19 99
OPERATOR'S WELL No. 8M-3
API WELL No. 47 - 109 - 1856-C
STATE COUNTY PERMIT

WELL TYPE: OIL GAS CBM LIQUID INJECTION WASTE DISPOSAL
(IF "GAS") PRODUCTION X STORAGE DEEP SHALLOW
LOCATION: ELEVATION 2067.93 WATER SHED LICK BRANCH OF INDIAN CREEK
DISTRICT CENTER COUNTY WYOMING
QUADRANGLE PINEVILLE, WV

SURFACE OWNER U.S. STEEL MINING COMPANY, LLC ACREAGE 37977.66
CBM ROYALTY OWNER U.S. STEEL MINING COMPANY, LLC LEASE ACREAGE

LEASE No. _____

PROPOSED WORK: DRILL X CONVERT DRILL DEEPER REDRILL FRACTURE OR STIMULATE PLUG OFF OLD FORMATION PERFORATE NEW FORMATION OTHER PHYSICAL CHANGE IN WELL (SPECIFY)

PLUG AND ABANDON CLEAN OUT AND REPLUG
TARGET FORMATION POCAHONTAS NO. 3 & PENN. COALS ESTIMATED DEPTH 1256'
WELL OPERATOR CDX GAS, LLC MANAGER JOSEPH ZUPANICK
ADDRESS P.O. BOX 609 ADDRESS P.O. BOX 609
PINEVILLE, WV 24874 PINEVILLE, WV 24874

6-6-0 NOV 1999

WYO 1856-C

State of West Virginia
Division of Environmental Protection
Section of Oil & Gas

Reviewed AC

Well Operator's Report of Well Work

Farm name: U.S. Steel Mining Company, LLC

Operator Well No: 8M-3

Location: Elevation: 2,065.76

Quadrangle: PINEVILLE

District: CENTER

County: WYOMING

Latitude: 14500 Feet South of 37 Deg. 35 Min. 00 Sec.
Longitude: 7550 Feet West of 81 Deg. 32 Min. 30 Sec.

Company: CDX Gas, LLC
5485 BELTLINE ROAD, SUITE 280
DALLAS, TX 75240-0000

Agent: JOSEPH A. ZUPANICK

Inspector: OFIE HELMICK

Permit Issued: 11/05/99

Well Work commenced: 12/01/99

Well Work completed: 01/01/00

Verbal plugging

Permission granted on: _____

Rotary x Cable _____ Rig

Total depth (ft) 1315.20

Fresh water depths (ft) N/A

Salt water depths (ft) N/A

Is coal being mined in the area (Y/N)? Y

Coal depths (ft): 152, 175, 199, 209, 317, 423, 573,
593, 712.5, 726, 890, 906.5, 978, 1205.5, 1257.5.

Casing & Tubing Size	Used in Drilling	Left in Well	Cement Fill up
13 3/8"	35'	35	9 ft ³
9 5/8"	1089	1089	341 ft ³
7"	366	366	55 ft ³
2 7/8"	1258	1258	221 ft ³

Office of Oil & Gas
Permitting
NOV 06 2000
WV Division of
Environmental Protection

OPEN FLOW DATA

Producing formation Pocahontas No. 3 Seam and Penn Coals

Pay zone depth (ft) _____

Gas: Initial open flow N/A Mcf/d

Oil: Initial open flow _____ Bbl/d

Final open flow N/A Mcf/d

Final open flow _____ Bbl/d

Time of open flow between initial and final tests: _____ hours

Static rock pressure _____ psig (surface pressure) after _____ hours

Second Producing formation _____

Pay zone depth (ft) _____

Gas: Initial open flow N/A Mcf/d

Oil: Initial open flow _____ Bbl/d

Final open flow N/A Mcf/d

Final open flow _____ Bbl/d

Time of open flow between initial and final tests: _____ hours

Static rock pressure _____ psig (surface pressure) after _____ hours

Note: ON BACK OF THIS FORM, PUT THE FOLLOWING: 1) DETAILS OF PERFORATED INTERVALS, FRACTURING OR STIMULATING, PHYSICAL CHANGE, ETC. 2) THE WELL LOG WHICH IS A SYSTEMATIC DETAILED GEOLOGICAL RECORD OF ALL FORMATIONS, INCLUDING COAL ENCOUNTERED BY THE WELLBORE.

For: CDX Gas, LLC

By: J.A. Zupanick

Date: 10/20/00

NOV 23 2000

WYO 1856 C

Operator: 8M-3
 API No. 47- 109-01856 C
 Location: Pineville

Details of Perforated Intervals, Fracturing or Stimulation, Physical Change, Etc.

Well Log & Geologic Record (continued)

Formation	Top	Bottom
Shale	783	800
Sandstone	800	881
Shale	881	890
Coal & Parting	890	894
Shale	894	906.5
Coal	906.5	908
Shale	908	915
Sandstone	915	930
Shale	930	950
Sandstone	950	970
Shale	970	978.5
Coal	978.5	980
Shale	980	989
Sand Shale	989	1011
Sandstone	1011	1101
Maybc Fracture Sandstone	1101	1103
Sandstone	1103	1125
Sandy Shale	1125	1135
Sandstone	1135	1145
Shale	1145	1150
Sandstone	1150	1161
Shale	1161	1164
Sandstone	1164	1174
Shale	1174	1178
Sandstone	1178	1201
Sandy Shale	1201	1205.5
Coal	1205.5	1209
Sandy Shale	1209	1240
Shale	1240	1257.5
Coal	1257.5	1261.5
Shale	1261.5	1300
Sandstone	1300	1315.20

RECEIVED
 Office of Oil & Gas
 Permitting
 NOV 06 2000
 WV Division of
 Environmental Protection

WYO 1856 C

Operator: 8M-3
 API No. 47- 109-01856 C
 Location: Pineville

Details of Perforated Intervals, Fracturing or Stimulation, Physical Change, Etc.

Well Log & Geologic Record

Formation	Top	Bottom
Sandy Shale	0	111
Sandstone	111	152
Coal	152	154
Shale	154	160
Sandstone	160	175
Coal	175	177
Shale	177	199
Coal	199	201
Shale	201	209
Coal	209	210
Shale	210	215
Sandstone	215	231
Shale	231	317
Coal	317	318
Sandstone	318	328
Shale	328	423
Coal	423	424
Shale	424	427
Sandy Shale	427	447
Sandstone	447	459
Shale	459	513
Coal	513	515
Shale	515	519
Coal	519	520
Shale	520	523
Sandstone	523	593
Coal	593	594
Shale	594	605
Sandstone	605	642
Shale	642	646
Sandstone	646	712.5
Coal	712.5	714
Shale	714	717
Sandy Shale	717	726
Coal	726	727
Shale	727	760
Sandstone	760	783

RECEIVED
 Office of Oil & Gas
 Permitting
 NOV 06 2000
 WV Division of
 Environmental Protection

NOV 23 2000
 NOV 23 2000