

POCAHONTAS LAND COORDINATES

N 47,110.13
E -6,990.23

9550'

LATITUDE 37° 30' 00"

LONGITUDE 81° 32' 30"

1500'

Topo Location

1/2 Mile Radius

1.29
1.81

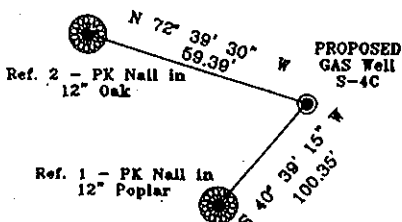
- Proposed S-5D
- Proposed S-5B
- Proposed S-5A
- Proposed S-5C
- Proposed S-5E

S-4B
S-4A
S-4C Proposed Gas Well
Elev. 2035.99

Proposed S-3B
N 85° 55' 34" E @ 2482.09'
Proposed S-3A
S 89° 33' 08" E @ 2647.90'
Proposed S-3C

**Berwind Land Company -
Surface, Coal, Oil and Gas
U.S. Steel Mining Company, LLC -
Pocahontas No. 3 Seam Lessee
Shannon-Pocahontas Mining Company -
Pocahontas No. 4 Seam Lessee
CNG Transmission Corporation -
Oil and Gas Lessee
CDX Gas, LLC - CBM Lessee**

REFERENCES
N.T.S.



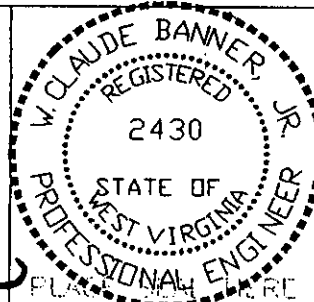
**Berwind Land Company - Coal, Oil and Gas
U.S. Steel Mining Company, LLC - Pocahontas No. 3 Seam Lessee
Berwind Group Oil and Gas Limited Partnership - Oil and Gas Lessee**

Notes:
No known domestic water supplies within 1000 feet.
(+) Denotes location of well on USGS map.

FILE No. CDXGAS
DRAWING NAME \PLAT\S-4C
Drawing Number 3-2-00-3SP
SCALE 1" = 1000'
MINIMUM DEGREE OF ACCURACY 1 : 2500
PROVEN SOURCE OF ELEVATION USGS B.M. F44
El. 1565

I THE UNDERSIGNED, HEREBY CERTIFY THAT THIS PLAT IS CORRECT TO THE BEST OF MY KNOWLEDGE AND BELIEF AND SHOWS ALL THE INFORMATION REQUIRED BY LAW AND THE REGULATIONS ISSUED AND PRESCRIBED BY THE DEPARTMENT OF MINES.

(SIGNED) *W. Claude Banner Jr.*
R.P.E. 2430 R.P.S.



**STATE OF WEST VIRGINIA
DIVISION OF ENVIRONMENTAL PROTECTION
OFFICE OF OIL AND GAS
NITRO, WV**

DATE MARCH 13, 2000
OPERATOR'S WELL No. S-4C
API WELL No. 47 - 109 - 01892C
STATE COUNTY PERMIT

WELL TYPE: OIL GAS CBM LIQUID INJECTION WASTE DISPOSAL
(IF "GAS") PRODUCTION X STORAGE DEEP SHALLOW Horizontal well
LOCATION: ELEVATION 2035.99 WATER SHED UNNAMED TRIBUTARY OF INDIAN CREEK
DISTRICT CENTER COUNTY WYOMING
QUADRANGLE WELCH, WV

SURFACE OWNER BERWIND LAND COMPANY ACREAGE 867.22 Tax Map 143 - Parcel 1
CBM ROYALTY OWNER BERWIND LAND COMPANY LEASE ACREAGE 2940.66

LEASE No.

PROPOSED WORK: DRILL X CONVERT DRILL DEEPER REDRILL FRACTURE OR
STIMULATE PLUG OFF OLD FORMATION PERFORATE NEW
FORMATION OTHER PHYSICAL CHANGE IN WELL (SPECIFY)

PLUG AND ABANDON CLEAN OUT AND REPLUG
TARGET FORMATION POCAHONTAS NO. 3 & NO. 4 SEAMS ESTIMATED DEPTH 1184' **APR 24 2000**
WELL OPERATOR CDX GAS, LLC MANAGER JOSEPH ZUPANICK
ADDRESS P.O. BOX 609 ADDRESS P.O. BOX 609
PINEVILLE, WV 24874 PINEVILLE, WV 24874

6-60

WYO 1892 C

State of West Virginia
Division of Environmental Protection
Section of Oil & Gas

ALB

Well Operator's Report of Well Work

Farm name: Berwind Land Company

Operator Well No: S-4C

Location: Elevation: 2,072.63

Quadrangle: WELCH

District: CENTER

County: WYOMING

Latitude: 1500 Feet South of 37 Deg. 30 Min. 00 Sec.

Longitude: 9550 Feet West of 81 Deg. 32 Min. 30 Sec.

Company: CDX Gas, LLC
P.O. Box 609
Pineville, WV 24874

Agent: JOSEPH A. ZUPANICK

Inspector: OFIE HELMICK
Permit Issued: 04/13/00
Well Work commenced: 08/09/00
Well Work completed: 09/19/00
Verbal plugging
Permission granted on: _____
Rotary x Cable _____ Rig
Total depth (ft) 1278'
Fresh water depths (ft) N/A
Salt water depths (ft) N/A
Is coal being mined in the area (Y/N)? Y
Coal depths (ft): Poca #4: 1196 - 1201'
Poca #3: 1253 - 1259

Casing & Tubing Size	Used in Drilling	Left in Well	Cement Fill up
13 3/8"	45'	45'	Surface
9 5/8"	474'	474'	Surface
7"	1185'	1185'	Surface

RECEIVED
Office of Oil & Gas
Permitting

JUN 11 2001

WV Division of
Environmental Protection

OPEN FLOW DATA

Producing formation Pocahontas #3

Pay zone depth Environmental Protection

Gas: Initial open flow N/A Mcf/d

Oil: Initial open flow _____ Bbl/d

Final open flow N/A Mcf/d

Final open flow _____ Bbl/d

Time of open flow between initial and final tests: _____ hours

Static rock pressure _____ psig (surface pressure) after _____ hours

Second Producing formation Pocahontas #4

Pay zone depth (ft) _____

Gas: Initial open flow N/A Mcf/d

Oil: Initial open flow _____ Bbl/d

Final open flow N/A Mcf/d

Final open flow _____ Bbl/d

Time of open flow between initial and final tests: _____ hours

Static rock pressure _____ psig (surface pressure) after _____ hours

Note: ON BACK OF THIS FORM, PUT THE FOLLOWING: 1) DETAILS OF PERFORATED INTERVALS, FRACTURING OR STIMULATING, PHYSICAL CHANGE, ETC. 2) THE WELL LOG WHICH IS A SYSTEMATICK DETAILED GEOLOGICAL RECORD OF ALL FORMATIONS, INCLUDING COAL ENCOUNTERED BY THE WELLBORE.

For: Frank Merendino
CDX Gas, LLC

By: _____

Date: _____

JUN 15 2001

WYOM. 1892 C

Operator: S-4C
API No. 47- 109-01892 C
Location: Wyoming County

Details of Perforated Intervals, Fracturing or Stimulation, Physical Change, Etc.

Horizontally Drill Pocahontas #3 coal seam

Well Log & Geologic Record - Depth from K.B.

Formation	Top	Bottom
Overburden	0	7
Sand	7	520
Sand & Shales	520	530
Sand	530	671
Sand	671	714
Sand	714	774
Sand / Shale	774	950
Sand	950	995
Sand / Shale	995	1144
Sand	1144	1158
Shale	1158	1196
Coal - Poca #4	1196	1201
Shale	1201	1225
Sand / Shale	1225	1237
Shale	1237	1253
Coal - Poca #3	1253	1259
Sand / Shale	1259	1290
Total Depth	1290	

