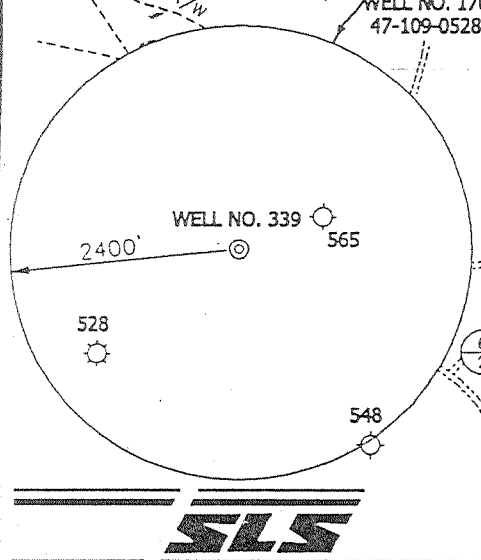
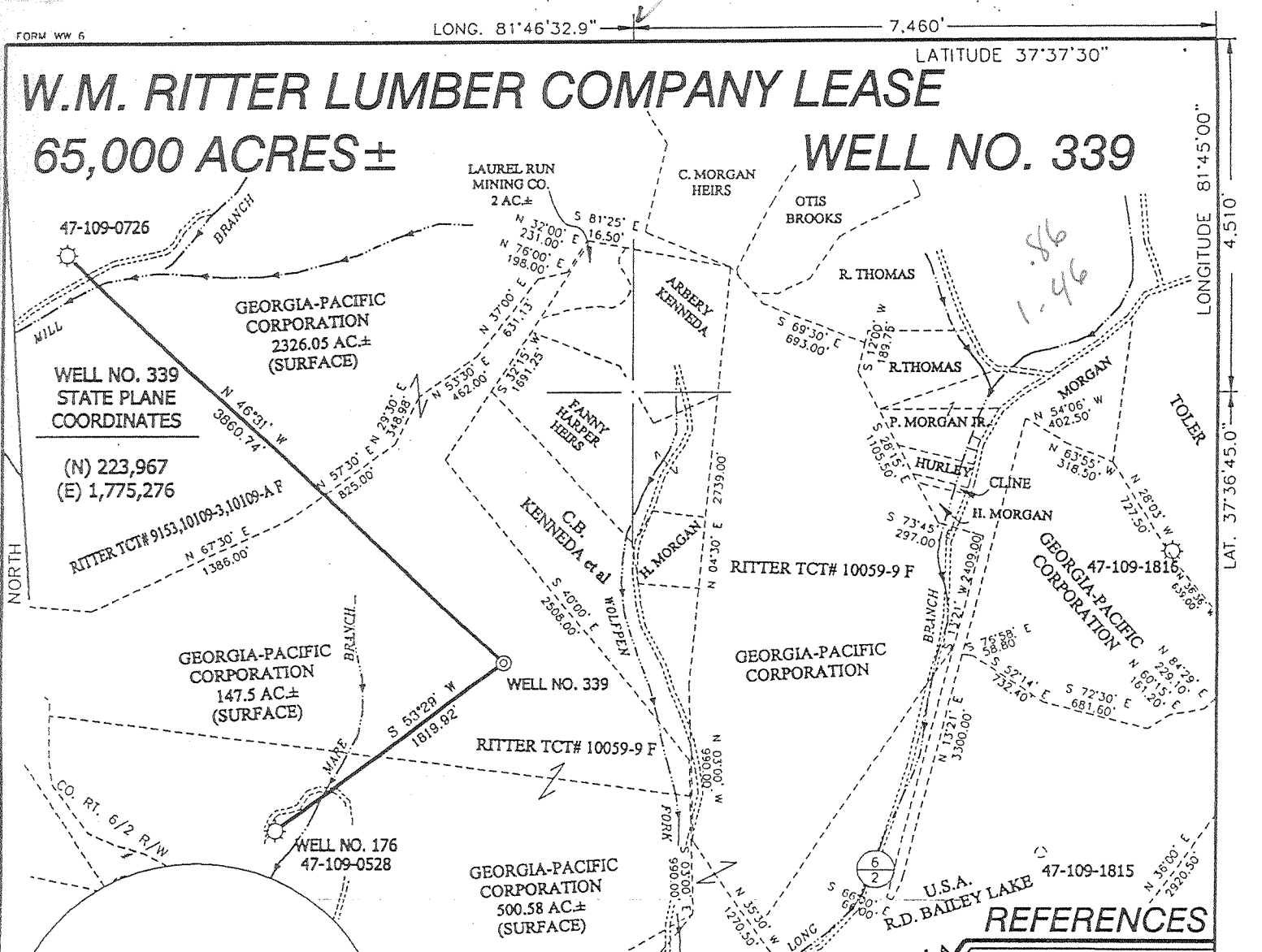


W.M. RITTER LUMBER COMPANY LEASE

65,000 ACRES±

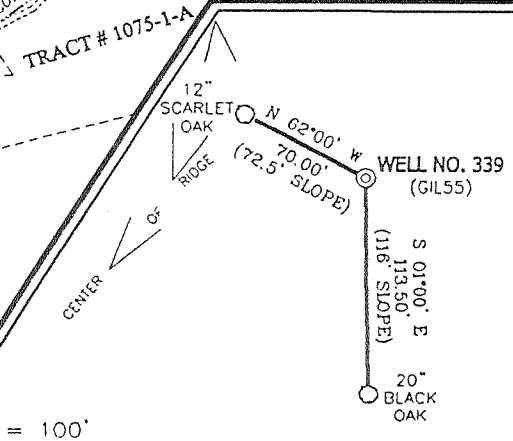
WELL NO. 339



NOTES ON SURVEY

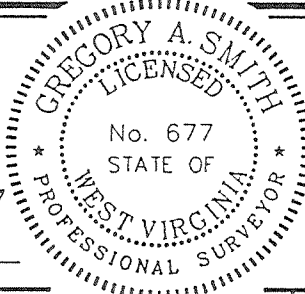
1. TIES TO WELLS AND CORNERS ARE BASED ON STATE PLANE GRID NORTH WV SOUTH ZONE NAD '27.
2. LEASE BOUNDARY DOES NOT APPEAR WITHIN THE SCOPE OF THIS PLAT.
3. SURFACE OWNER AND ADJOINER INFORMATION TAKEN FROM THE ASSESSOR AND COUNTY CLERK RECORDS OF WYOMING COUNTY IN JANUARY, 2000.
4. WELL LAT./LONG. ESTABLISHED BY DGPS(SUBMETER MAPPING GRADE).
5. TIES TO REFERENCES ARE BASED ON MAGNETIC NORTH 2/01/00.

REFERENCES



I THE UNDERSIGNED, HEREBY CERTIFY THAT THIS PLAT IS CORRECT TO THE BEST OF MY KNOWLEDGE AND BELIEF AND SHOWS ALL THE INFORMATION REQUIRED BY LAW AND THE REGULATIONS ISSUED AND PRESCRIBED BY THE DEPARTMENT OF ENERGY.

P.S. 677 Gregory A. Smith



(+) DENOTES LOCATION OF WELL ON UNITED STATES TOPOGRAPHIC MAPS.

DATE MARCH 17, 2000

OPERATORS WELL NO. RITTER #339

API WELL NO. 47-109-01900

STATE COUNTY PERMIT

MINIMUM DEGREE OF ACCURACY 1 / 2500 FILE NO. 3999P339 (84-47)

PROVEN SOURCE OF ELEVATION JUNCTION OF ROADS ELEVATION 1192' SCALE 1" = 1000'

STATE OF WEST VIRGINIA DIVISION OF ENVIRONMENTAL PROTECTION OFFICE OF OIL AND GAS

WELL TYPE : OIL GAS LIQUID WASTE IF INJECTION DISPOSAL "GAS" PRODUCTION STORAGE DEEP SHALLOW

LOCATION : ELEVATION 1740' WATERSHED WOLFPEN FORK OF LONG BRANCH OF GUYANDOTTE RIVER

DISTRICT CLEAR FORK COUNTY WYOMING QUADRANGLE GILBERT 7.5'

SURFACE OWNER GEORGIA - PACIFIC CORPORATION ACREAGE 147.5

ROYALTY OWNER GEORGIA - PACIFIC CORPORATION LEASE ACREAGE 65.000

PROPOSED WORK : LEASE NO. 04157

DRILL CONVERT DRILL DEEPER REDRILL FRACTURE OR STIMULATE PLUG OFF OLD FORMATION PERFORATE NEW FORMATION PLUG AND ABANDON CLEAN OUT AND REPLUG OTHER

PHYSICAL CHANGE IN WELL (SPECIFY) _____ TARGET FORMATION DEVONIAN SHALE

ESTIMATED DEPTH 6500'

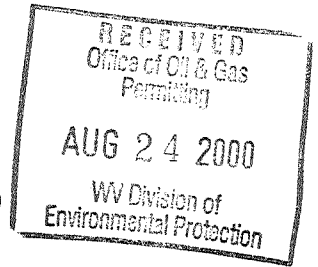
WELL OPERATOR EASTERN STATES OIL AND GAS, INC. DESIGNATED AGENT ROBERT ALLEY

ADDRESS P.O. BOX 2347 CHARLESTON, WV 25328 ADDRESS P.O. BOX 2347 CHARLESTON, WV 25328

DEEP WELL 6-6 266 APR 28 2000

State of West Virginia
Division of Environmental Protection
Section of Oil and Gas

Well Operator's Report of Well Work



Farm Name: Georgia Pacific Corp. Operator Well No.: Ritter # 339

LOCATION: Elevation: 1,740.00 Quadrangle: Gilbert
District: Clear Fork County: Wyoming

Latitude: 4510 Feet South of 37 Deg. 37 30
Longitude: 7460 Feet West of 81 Deg. 45 0

Company: Eastern States Oil & Gas
P.O. Box 2347, 1710 Pennsylvania Avenue
Charleston, WV 25328

Agent: Robert Alley

Inspector: Offie Helmick

Permit Issued: 04/24/2000

Well work commenced: 06/15/00

Well work completed: 07/13/00

Verbal Plugging

Permission granted on:

Rotary Rig X Cable Rig

Total Depth 6255 feet

Fresh water depths (ft) 108

Salt water depths (ft) 1138

Is coal being mined in area?

Coal Depths (ft): 201', 912'

Casing & Tubing Size	Used in Drilling	Left in Well	Cement Fill Up Cu. Ft.
13-3/8"	42'	42'	grouted
9-5/8"	760'	760'	302 ft³
7"	2013'	2013'	364 ft³
4-1/2"	6200'	6200'	360 ft³

OPEN FLOW DATA

Producing formation Rhinestreet, Upper / Lower Shale, Berea

Pay Zone Depth (ft):

See Attach for details

Gas: Initial open flow 15 MCF/d

Oil: Initial open flow Bbl/d

Final open flow: 483 MCF/d

Final open flow:

Time of open flow between initial and final tests Hours

Static rock pressure 640 psig (surface pressure) after Hours

Second producing formation

Pay Zone Depth (ft):

Gas: Initial open flow MCF/d

Oil: Initial open flow Bbl/d

Final open flow: MCF/d

Final open flow:

Time of open flow between initial and final tests Hours

Static rock pressure psig (surface pressure) after Hours

NOTE: ON BACK OF THIS FORM PUT THE FOLLOWING: 1) DETAILS OF PERFORATED INTERVALS, FRACTURING OR STIMULATING, PHYSICAL CHANGE, ETC. 2) THE WELL LOG WHICH IS A SYSTEMATIC DETAILED GEOLOGICAL RECORD OF ALL FORMATIONS, INCLUDING COAL ENCOUNTERED BY THE WELLBORE.

For: Eastern States Oil & Gas

By: [Signature]
Date: 8/22/00

AUG 25 2000

WV 1900

EASTERN STATES OIL & GAS, INC.
WR-35 COMPLETION REPORT - Attachment
Well Treatment Summary

Well: Ritter # 339

API# 47-109-01900

Date	07/11/00	07/11/00	07/11/00			
Type Frac Acid, N ₂ , Foam, Water	N ²	N ²	N ²			
Zone Treated	Rhinestreet	Upper & Lower Shale	Berea			
# Perfs	28	20	25			
From - To:	5391' - 6134'	4752' - 5160'	3896' - 3908'			
BD Pressure @ psi	3010	3509	2777			
ATP psi	3099	3780	2475			
Avg. Rate, B=B/M, S= SCF/M	49555 S	49263 S	50656 S			
Max. Treat Press psi	3168	4029	2777			
ISIP psi	2466 (final)	3050 (final)	1760 (final)			
Frac Gradient	.52	.73	.51			
10 min S-I Pressure	1753	1673	1351			
Material Volume						
Sand-sks						
Water-bbl						
SCF N ₂	721,800	847,258	403,915			
Acid-gal	500 gal 7 ½%	500 gal 7.8%	300 gal 7.8%			
NOTES:						

TOP	BOTTOM	FORMATION	REMARKS
0'	201'	Sand	Water @ 108'
201'	203'	Coal	
203'	289'	Sand	
289'	378'	Shale	
378'	477'	Sand	
477'	515'	Sandy Shale	
515'	839'	Sand	
839'	912'	Sandy Shale	
912'	915'	Coal	
915'	965'	Sand	
965'	1000'	Sandy Shale	
1000'	1018'	Sand	
1018'	1403'	Salt Sand	Water @ 1138'
1460'	1871'	Lower Salt Sand	GT @ 1855' = NS
2078'	2189'	Ravenclyff	Water @ 2100'
2192'	2244'	Avis Lime	
2263'	2332'	Upper Maxton	GT @ 2301' = NS
2792'	2804'	Lower Maxton	GT @ 2488' & 2674' = NS
2862'	2952'	Little Lime	GT @ 2861' & 3047' = NS
2956'	3304'	Big Lime	GT @ 3171', 3359' = NS
3428'	3543'	Weir	GT @ 3639' = NS
3871'	3893'	Sunbury	Water @ 3950'
3893'	3935'	Berea	
3935'	4936'	Upper Huron	GT @ 4010', 4302' = NS
4187'	4210'	Gordon	GT @ 4862', 5267' = NS
4946'	5540'	Lower Huron	
5540'	5689'	Java	GT @ 5765', 5983' = NS
5689'	5947'	Angola	
5947'	6250'	Rhinestreet	
6250'		Onondaga	GT @ collars = odor
	6255'	TD.	