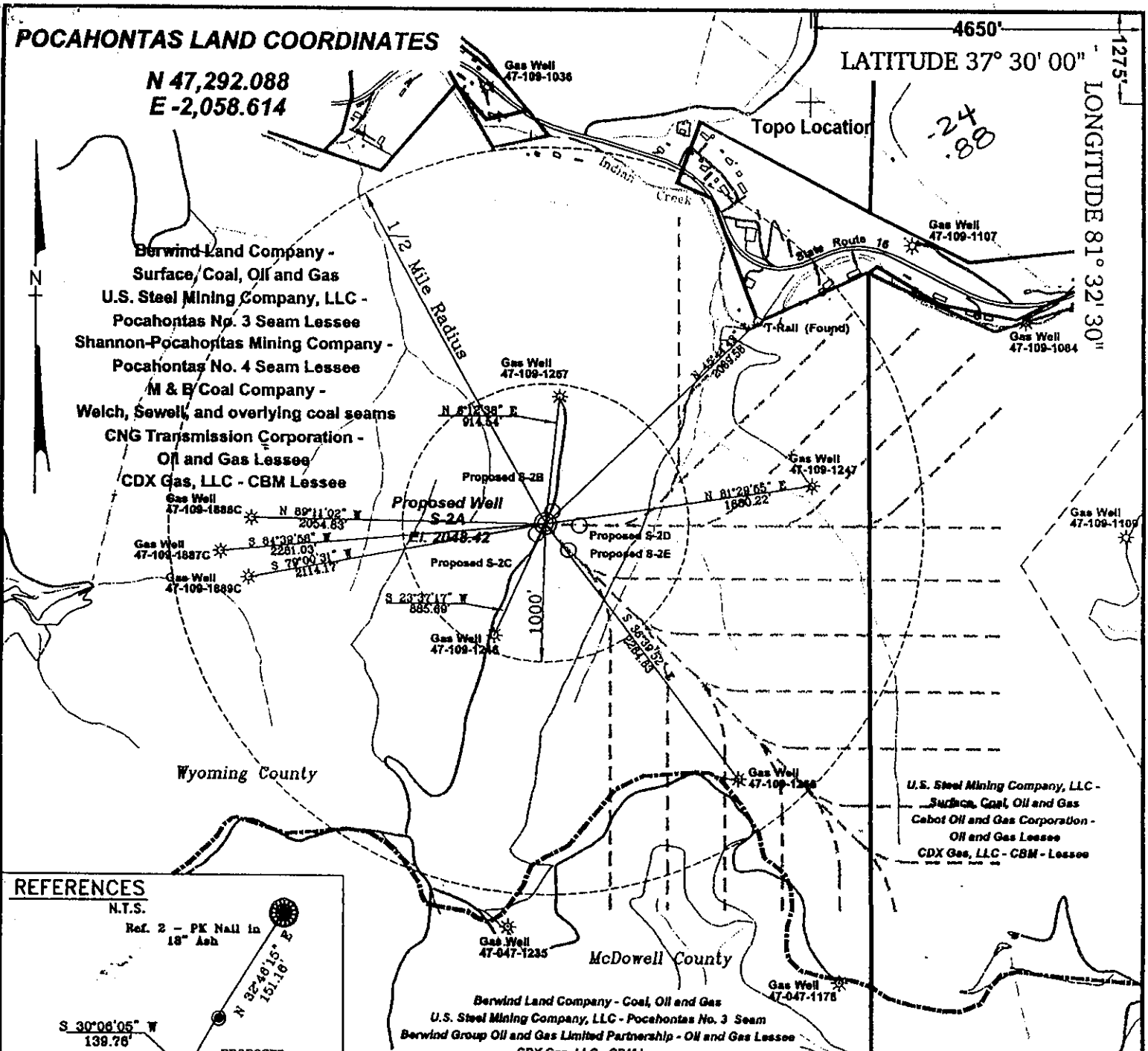


POCAHONTAS LAND COORDINATES

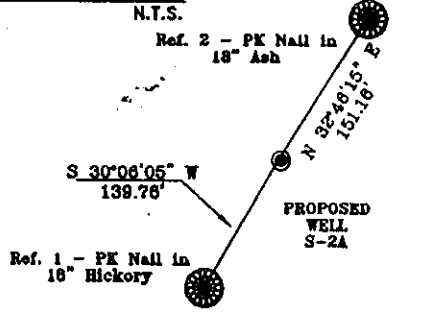
N 47,292.088
E -2,058.614

LATITUDE 37° 30' 00"

LONGITUDE 81° 32' 30"



REFERENCES



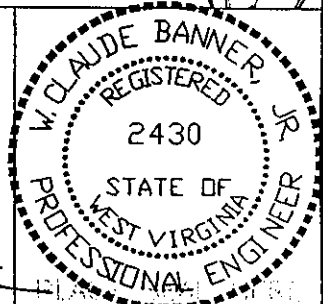
Notes:

No known domestic water supplies within 1000 feet.
(+) Denotes location of well on USGS map.

FILE No. CDXGAS
DRAWING NAME \PLAT\S-2A
Drawing Number 8-30-00-1SP
SCALE 1" = 1000'
MINIMUM DEGREE OF ACCURACY 1 : 2500
PROVEN SOURCE OF ELEVATION USGS B.M. F44
El. 1565

I THE UNDERSIGNED, HEREBY CERTIFY THAT THIS PLAT IS CORRECT TO THE BEST OF MY KNOWLEDGE AND BELIEF AND SHOWS ALL THE INFORMATION REQUIRED BY LAW AND THE REGULATIONS ISSUED AND PRESCRIBED BY THE DEPARTMENT OF MINES.

(SIGNED) W. Claude Banner
R.P.E. 2430 R.P.S.



**STATE OF WEST VIRGINIA
DIVISION OF ENVIRONMENTAL PROTECTION
OFFICE OF OIL AND GAS
NITRO, WV**

DATE SEPTEMBER 11 20 00
OPERATOR'S WELL No. S-2A
API WELL No. 47 - 109 - 01948
STATE COUNTY PERMIT

WELL TYPE: OIL GAS CBM LIQUID INJECTION WASTE DISPOSAL
(IF "GAS") PRODUCTION X STORAGE DEEP SHALLOW
LOCATION: ELEVATION 2048.42 WATER SHED UNNAMED TRIBUTARY OF INDIAN CREEK
DISTRICT CENTER COUNTY WYOMING
QUADRANGLE WELCH, WV

SURFACE OWNER BERWIND LAND COMPANY ACREAGE 867.22 Tax Map 143 - Parcel 1
CBM ROYALTY OWNER BERWIND LAND COMPANY LEASE ACREAGE 2940.66
CBM ROYALTY OWNER U.S. STEEL MINING COMPANY, LLC

X LEASE No. _____
PROPOSED WORK: DRILL CONVERT DRILL DEEPER REDRILL FRACTURE OR
STIMULATE PLUG OFF OLD FORMATION PERFORATE NEW OCT 06 2000
FORMATION OTHER PHYSICAL CHANGE IN WELL (SPECIFY) _____
PLUG AND ABANDON CLEAN OUT AND REPLUG
TARGET FORMATION POCAHONTAS NO. 3 & NO. 4 SEAM ESTIMATED DEPTH 1101'
WELL OPERATOR CDX GAS, LLC MANAGER JOSEPH ZUPANICK
ADDRESS P.O. BOX 609 ADDRESS P.O. BOX 609
PINEVILLE, WV 24874 PINEVILLE, WV 24874

6-0 0

WYO 1948C

State of West Virginia
Division of Environmental Protection
Section of Oil & Gas

Reviewed *AZB*

Well Operator's Report of Well Work

Farm name: Berwind Land Company

Operator Well No: S-2A

Location: Elevation: 2,046.08

Quadrangle: WELCH

District: CENTER

County: WYOMING

Latitude: 1275 Feet South of 37 Deg. 30 Min. 00 Sec.
Longitude: 4650 Feet West of 81 Deg. 32 Min. 30 Sec.

Company: CDX Gas, LLC
P.O. Box 609
Pineville, WV 24874

RECEIVED
Office of Oil & Gas
Permitting
JUN 11 2001
WV Division of
Environmental Protection

Agent: JOSEPH A. ZUPANICK

Inspector: OFIE HELMICK
Permit Issued: 10/02/00
Well Work commenced: 12/08/00
Well Work completed: 12/11/00
Verbal plugging
Permission granted on: _____
Rotary x Cable _____ Rig
Total depth (ft) 890'
Fresh water depths (ft) N/A
Salt water depths (ft) N/A
Is coal being mined in the area (Y/N)? Y
Coal depths (ft): N/A

Casing & Tubing Size	Used in Drilling	Left in Well	Cement Fill up
13 5/8"	40'	40'	Surface
9 5/8"	310'	310'	Surface
7"	850'	850'	Surface

OPEN FLOW DATA

Producing formation Non-Producer Pay zone depth (ft) _____
Gas: Initial open flow N/A Mcf/d Oil: Initial open flow _____ Bbl/d
Final open flow N/A Mcf/d Final open flow _____ Bbl/d
Time of open flow between initial and final tests: _____ hours
Static rock pressure _____ psig (surface pressure) after _____ hours

Second Producing formation _____ Pay zone depth (ft) _____
Gas: Initial open flow N/A Mcf/d Oil: Initial open flow _____ Bbl/d
Final open flow N/A Mcf/d Final open flow _____ Bbl/d
Time of open flow between initial and final tests: _____ hours
Static rock pressure _____ psig (surface pressure) after _____ hours

Note: ON BACK OF THIS FORM, PUT THE FOLLOWING: 1) DETAILS OF PERFORATED INTERVALS, FRACTURING OR STIMULATING, PHYSICAL CHANGE, ETC. 2) THE WELL LOG WHICH IS A SYSTEMATICK DETAILED GEOLOGICAL RECORD OF ALL FORMATIONS, INCLUDING COAL ENCOUNTERED BY THE WELLBORE.

Joseph Zupanick
For: CDX Gas, LLC
By: *J. A. Zupanick*
Date: 6/1/01

JUN 15 2001

WYOM, 1948 C

Operator: S-2A
 API No. 47- 109-01948 C
 Location: Wyoming County

Details of Perforated Intervals, Fracturing or Stimulation, Physical Change, Etc.

N/A

Well Log & Geologic Record - Depths from K.B.

Formation	Top	Bottom
Sand	36	117
Sand /Shale	117	340
Sand	340	430
Shale	430	450
Sand	450	570
Shale	570	590
Sand / Shale	590	691
Sand	691	906
Total Depth	906	

