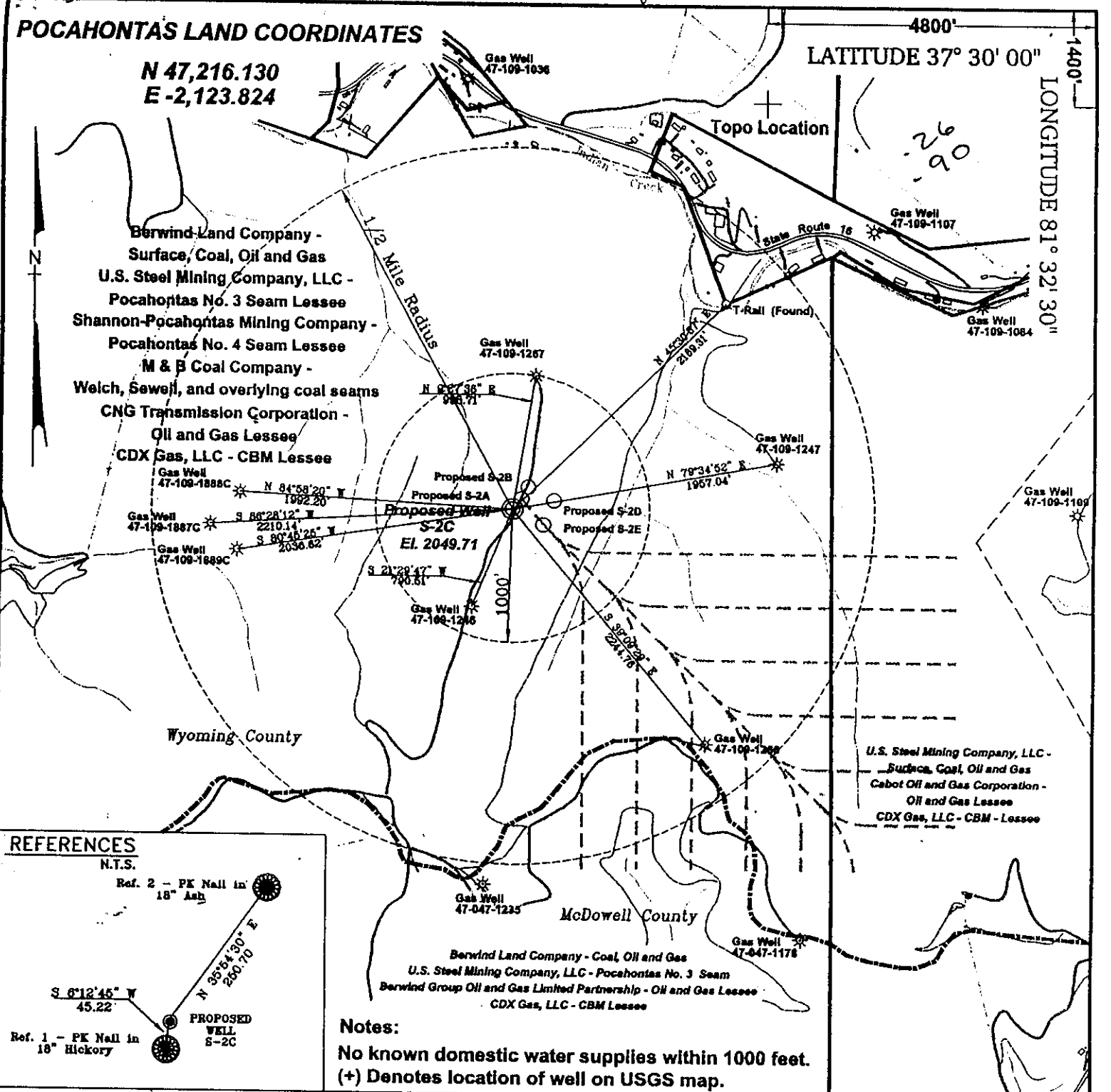


POCAHONTAS LAND COORDINATES

N 47,216.130
E -2,123.824

LATITUDE 37° 30' 00"

LONGITUDE 81° 32' 30"



Berwind Land Company -
Surface, Coal, Oil and Gas
U.S. Steel Mining Company, LLC -
Pocahontas No. 3 Seam Lessee
Shannon-Pocahontas Mining Company -
Pocahontas No. 4 Seam Lessee
M & B Coal Company -
Welch, Sewell, and overlying coal seams
CNG Transmission Corporation -
Oil and Gas Lessee
CDX Gas, LLC - CBM Lessee

U.S. Steel Mining Company, LLC -
Surface, Coal, Oil and Gas
Cabot Oil and Gas Corporation -
Oil and Gas Lessee
CDX Gas, LLC - CBM - Lessee

Berwind Land Company - Coal, Oil and Gas
U.S. Steel Mining Company, LLC - Pocahontas No. 3 Seam
Berwind Group Oil and Gas Limited Partnership - Oil and Gas Lessee
CDX Gas, LLC - CBM Lessee

REFERENCES
N.T.S.

Ref. 2 - PK Nail in 18" Ash
N 55° 15' 30" E
280.70

Ref. 1 - PK Nail in 18" Hickory
S 6° 12' 45" W
45.22

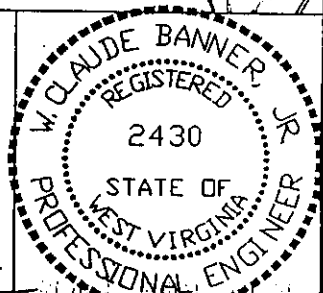
PROPOSED WELL S-2C

Notes:
No known domestic water supplies within 1000 feet.
(+) Denotes location of well on USGS map.

FILE No. CDXGAS
DRAWING NAME \PLAT S-2C
Drawing Number 8-30-00-3SP
SCALE 1" = 1000'
MINIMUM DEGREE OF ACCURACY 1 : 2500
PROVEN SOURCE OF ELEVATION USGS B.M. F44
EL. 1565

I THE UNDERSIGNED, HEREBY CERTIFY THAT THIS PLAT IS CORRECT TO THE BEST OF MY KNOWLEDGE AND BELIEF AND SHOWS ALL THE INFORMATION REQUIRED BY LAW AND THE REGULATIONS ISSUED AND PRESCRIBED BY THE DEPARTMENT OF MINES.

(SIGNED) *W. Claude Banner*
R.P.E. 2430 R.P.S.



STATE OF WEST VIRGINIA
DIVISION OF ENVIRONMENTAL PROTECTION
OFFICE OF OIL AND GAS
NITRO, WV

DATE SEPTEMBER 11 2000
OPERATOR'S WELL No. S-2C
API WELL No. 47 - 109 - 01950C

WELL TYPE: OIL GAS CBM LIQUID INJECTION WASTE DISPOSAL
(IF "GAS") PRODUCTION X STORAGE DEEP SHALLOW Horizontal well

LOCATION: ELEVATION 2049.71 WATER SHED UNNAMED TRIBUTARY OF INDIAN CREEK
DISTRICT CENTER COUNTY WYOMING
QUADRANGLE WELCH, WV

SURFACE OWNER BERWIND LAND COMPANY ACREAGE 867.22 Tax Map 143 - Parcel 1
CBM ROYALTY OWNER BERWIND LAND COMPANY LEASE ACREAGE 2940.66
CBM ROYALTY OWNER U.S. STEEL MINING COMPANY, LLC

LEASE No. _____

PROPOSED WORK: DRILL X CONVERT DRILL DEEPER REDRILL FRACTURE OR STIMULATE PLUG OFF OLD FORMATION PERFORATE NEW FORMATION OTHER PHYSICAL CHANGE IN WELL (SPECIFY)

PLUG AND ABANDON CLEAN OUT AND REPLUG

TARGET FORMATION POCAHONTAS NO. 3 & NO. 4 SEAM ESTIMATED DEPTH 1104' OCT 05 2000
WELL OPERATOR CDX GAS, LLC MANAGER JOSEPH ZUPANICK
ADDRESS P.O. BOX 609 ADDRESS PINEVILLE, WV 24874
PINEVILLE, WV 24874

WYO 1950 C

State of West Virginia
Division of Environmental Protection
Section of Oil & Gas

Handwritten initials

Well Operator's Report of Well Work

Farm name: Berwind Land Company

Operator Well No: S-2C

Location: Elevation: 2,046.55

Quadrangle: WELCH

District: CENTER

County: WYOMING

Latitude: 1400 Feet South of 37 Deg. 30 Min. 00 Sec.
Longitude: 4800 Feet West of 81 Deg. 32 Min. 30 Sec.

Company: CDX Gas, LLC
P.O. Box 609
Pineville, WV 24874

Agent: JOSEPH A. ZUPANICK

Inspector: OFIE HELMICK
Permit Issued: 10/02/00
Well Work commenced: 12/19/00
Well Work completed: 02/24/01
Verbal plugging _____
Permission granted on: _____
Rotary x Cable _____ Rig
Total depth (ft) 1100
Fresh water depths (ft) N/A
Salt water depths (ft) N/A
Is coal being mined in the area (Y/N)? Y
Coal depths (ft): Poca #4 1007 - 1012
Poca #3 1074 - 1081

Casing & Tubing Size	Used in Drilling	Left in Well	Cement Fill up
13 3/8"	30'	30'	Surface
9 5/8"	304'	304'	Surface
7"	960'	960'	Surface

RECEIVED
 Office of Oil & Gas
 Permitting

JUN 11 2001
 WV Division of
 Environmental Protection

OPEN FLOW DATA

Producing formation Pocahontas #3 Pay zone depth (ft) _____
 Gas: Initial open flow N/A Mcf/d Oil: Initial open flow _____ Bbl/d
 Final open flow N/A Mcf/d Final open flow _____ Bbl/d
 Time of open flow between initial and final tests: _____ hours
 Static rock pressure _____ psig (surface pressure) after _____ hours

Second Producing formation _____ Pay zone depth (ft) _____
 Gas: Initial open flow N/A Mcf/d Oil: Initial open flow _____ Bbl/d
 Final open flow N/A Mcf/d Final open flow _____ Bbl/d
 Time of open flow between initial and final tests: _____ hours
 Static rock pressure _____ psig (surface pressure) after _____ hours

Note: ON BACK OF THIS FORM, PUT THE FOLLOWING: 1) DETAILS OF PERFORATED INTERVALS, FRACTURING OR STIMULATING, PHYSICAL CHANGE, ETC. 2) THE WELL LOG WHICH IS A SYSTEMATICK DETAILED GEOLOGICAL RECORD OF ALL FORMATIONS, INCLUDING COAL ENCOUNTERED BY THE WELLBORE.

Joseph Zupanick
For: CDX Gas, LLC
By: J. A. Zupanick
Date: 6/01/01

JUN 15 2001

W40M, 1950 C

Details of Perforated Intervals, Fracturing or Stimulation, Physical Change, Etc.

Horizontally drilled Pocahontas #3 coal seam.

Well Log & Geologic Record - Depths from K.B.

Formation	Top	Bottom
Overburden	0	5
Shale	5	20
Sand	20	30
Sand / Shale	30	181
Sandstone	181	209
Shale	209	212
Sandstone	212	220
Sand / Shale	220	230
Sandstone	230	320
Sandstone	320	361
Sand	361	421
Sand / Shale	421	680
Sand	680	890
Shale	890	941
Sand	941	1007
Coal - Poca #4	1007	1012
Shale	1012	1074
Coal - Poca #3	1074	1081
Sand	1081	1104
Total Depth	1104	

