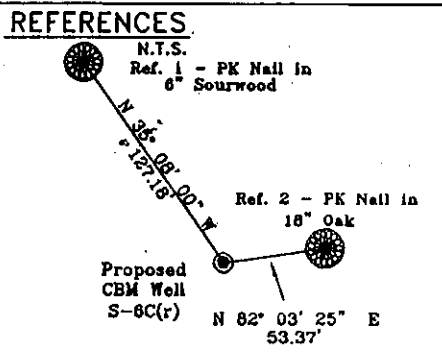


POCAHONTAS LAND COORDINATES
N 45,975.555
E -13,914.993

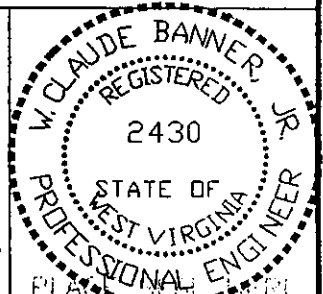


Notes:
No known domestic water supplies within 1000 feet.
(+) Denotes location of well on USGS map.

FILE No. CDXGAS
DRAWING NAME \PLAT\S-6C
Drawing Number 3-17-00-1SP
SCALE 1" = 1000'
MINIMUM DEGREE OF ACCURACY 1 : 2500
PROVEN SOURCE OF ELEVATION USGS B.M. F44
EL. 1565

I THE UNDERSIGNED, HEREBY CERTIFY THAT THIS PLAT IS CORRECT TO THE BEST OF MY KNOWLEDGE AND BELIEF AND SHOWS ALL THE INFORMATION REQUIRED BY LAW AND THE REGULATIONS ISSUED AND PRESCRIBED BY THE DEPARTMENT OF MINES.

(SIGNED) *W. Claude Banner, Jr.*
R.P.E. 2430 R.P.S.



STATE OF WEST VIRGINIA
DIVISION OF ENVIRONMENTAL PROTECTION
OFFICE OF OIL AND GAS
NITRO, WV

DATE AUGUST 31, 2000
OPERATOR'S WELL No. S-6C(r)
API WELL No. 47 - 109 - 01955C

WELL TYPE: OIL GAS CBM LIQUID INJECTION WASTE DISPOSAL
(IF "GAS") PRODUCTION X STORAGE DEEP SHALLOW STATE COUNTY PERMIT

LOCATION: ELEVATION 2147.76 WATER SHED BAILEY BRANCH OF INDIAN CREEK
DISTRICT CENTER COUNTY WYOMING horizontal
QUADRANGLE WELCH, WV

SURFACE OWNER BERWIND LAND COMPANY ACREAGE 867.22 Tax Map 143 - Parcel 1
CBM ROYALTY OWNER BERWIND LAND COMPANY LEASE ACREAGE 2940.66

LEASE No. _____

PROPOSED WORK: DRILL X CONVERT DRILL DEEPER REDRILL FRACTURE OR STIMULATE PLUG OFF OLD FORMATION PERFORATE NEW FORMATION OTHER PHYSICAL CHANGE IN WELL (SPECIFY)

PLUG AND ABANDON CLEAN OUT AND REPLUG

TARGET FORMATION POCAHONTAS NO. 3 & NO. 4 SEAMS ESTIMATED DEPTH 1488'

WELL OPERATOR CDX GAS, LLC MANAGER JOSEPH ZUPANICK
ADDRESS P.O. BOX 609 ADDRESS PINEVILLE, WV 24874

PINEVILLE, WV 24874

OCT 06 2000

6-6 272

WYO 1955 C

State of West Virginia
Division of Environmental Protection
Section of Oil & Gas

M.P.

Well Operator's Report of Well Work

Farm name: Berwind Land Company

Operator Well No: S-6C(r)

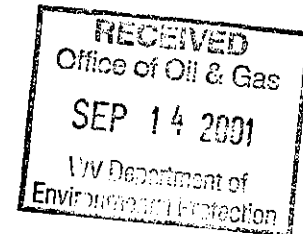
Location: Elevation: 2,158.75

Quadrangle: WELCH

District: CENTER

County: WYOMING

Latitude: 2550 Feet South of 37 Deg. 30 Min. 00 Sec.
Longitude: 4300 Feet West of 81 Deg. 35 Min. 00 Sec.



Company: CDX Gas, LLC
P.O. Box 609
Pineville, WV 24874

Agent: JOSEPH A. ZUPANICK

Inspector: OFIE HELMICK
Permit issued: 10/02/00
Well Work commenced: 01/10/01
Well Work completed: 05/19/01

Casing & Tubing Size	Used in Drilling	Left in Well	Cement Fill up
13 3/8"	30'	30'	Surface
9 5/8"	314'	314'	Surface
7"	1,134'	1,134'	Surface
2 7/8"	1,419'		Hanging

Verbal plugging
Permission granted on:
Rotary x Cable _____ Rig
Total depth (ft) 1485'
Fresh water depths (ft) N/A
Salt water depths (ft) N/A
Is coal being mined in the area (Y/N)? Y
Coal depths (ft): 880, 986, 1024, 1054, 1294, 1373, 1433

OPEN FLOW DATA

Producing formation Pocahontas No. 3 and No. 4 Seams Pay zone depth (ft)
Gas: Initial open flow N/A Mcf/d Oil: Initial open flow _____ Bbl/d
Final open flow N/A Mcf/d Final open flow _____ Bbl/d
Time of open flow between initial and final tests: _____ hours
Static rock pressure _____ psig (surface pressure) after _____ hours

Second Producing formation _____ Pay zone depth (ft)
Gas: Initial open flow N/A Mcf/d Oil: Initial open flow _____ Bbl/d
Final open flow N/A Mcf/d Final open flow _____ Bbl/d
Time of open flow between initial and final tests: _____ hours
Static rock pressure _____ psig (surface pressure) after _____ hours

Note: ON BACK OF THIS FORM, PUT THE FOLLOWING: 1) DETAILS OF PERFORATED INTERVALS, FRACTURING OR STIMULATING, PHYSICAL CHANGE, ETC. 2) THE WELL LOG WHICH IS A SYSTEMATICK DETAILED GEOLOGICAL RECORD OF ALL FORMATIONS, INCLUDING COAL ENCOUNTERED BY THE WELLBORE.

For: Joseph Zupanick
CDX Gas, LLC

By: J. A. Zupanick
Date: 9/10/01

WYO 1955 C

SEP 14 2001

Operator: S-6C(r)
API No. 47- 109-01955 C
Location: Wyoming County

Details of Perforated Intervals, Fracturing or Stimulation, Physical Change, Etc.

N/A

Well Log & Geologic Record - Depths from K.B.

Formation	Top	Bottom
Overburden	0	10
Shale	10	20
Sandstone	20	100
Sandyshale	100	630
Sandstone	630	880
Coal	880	882
Sandstone	882	986
Coal	986	990
Sandyshale	990	1024
Coal	1024	1027
Sandstone	1027	1054
Coal	1054	1057
Sandstone	1057	1275
Shale	1275	1294
Coal	1294	1297
Shale	1297	1328
Sandstone	1328	1373
Coal - Poca #4	1373	1378
Shale	1378	1433
Coal - Poca #3	1433	1438
Shale	1438	1485

