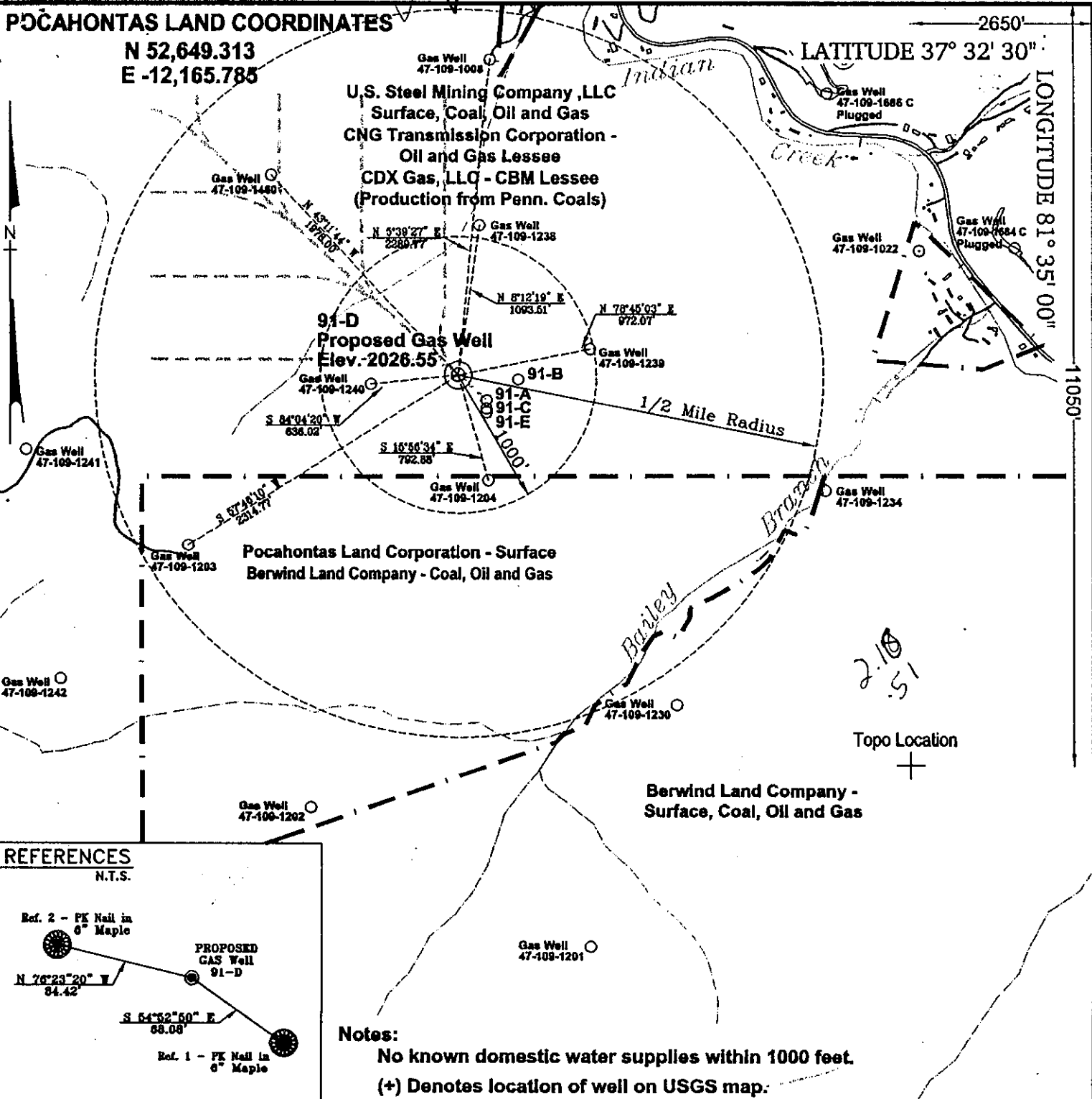


**POCAHONTAS LAND COORDINATES**

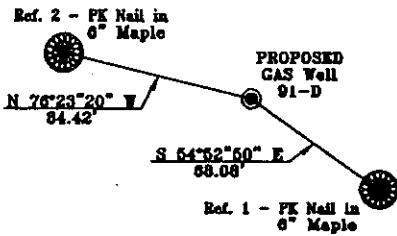
N 52,649.313  
E -12,165.785

LATITUDE 37° 32' 30"

LONGITUDE 81° 35' 00"



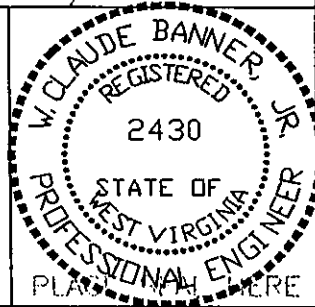
**REFERENCES**  
N.T.S.



**Notes:**  
No known domestic water supplies within 1000 feet.  
(+) Denotes location of well on USGS map:

FILE No. CDXGAS  
DRAWING NAME \CDXGAS\PLAT  
Drawing Number 12-7-00-9SP  
SCALE 1" = 1000'  
MINIMUM DEGREE OF ACCURACY 1 : 2500  
PROVEN SOURCE OF ELEVATION GPS - GLOBAL POSITIONING SYSTEM

I THE UNDERSIGNED, HEREBY CERTIFY THAT THIS PLAT IS CORRECT TO THE BEST OF MY KNOWLEDGE AND BELIEF AND SHOWS ALL THE INFORMATION REQUIRED BY LAW AND THE REGULATIONS ISSUED AND PRESCRIBED BY THE DEPARTMENT OF MINES.  
(SIGNED) *W. Claude Banner Jr.*  
R.P.E. 2430 R.P.S.



**STATE OF WEST VIRGINIA  
DIVISION OF ENVIRONMENTAL PROTECTION  
OFFICE OF OIL AND GAS  
NITRO, WV**

DATE DECEMBER 11, 2000  
OPERATOR'S WELL No. 91-D  
API WELL No. 47-109-109-01974C  
STATE COUNTY PERMIT

WELL TYPE: OIL GAS CBM LIQUID INJECTION WASTE DISPOSAL  
(IF "GAS") PRODUCTION X STORAGE DEEP SHALLOW  
LOCATION: ELEVATION 2026.55 WATER SHED UNNAMED TRIBUTARY OF INDIAN CREEK  
DISTRICT CENTER COUNTY WYOMING  
QUADRANGLE PINEVILLE, WV  
SURFACE OWNER U.S. STEEL MINING COMPANY, LLC ACREAGE 37977.66  
CBM ROYALTY OWNER U.S. STEEL MINING COMPANY, LLC LEASE ACREAGE 4498.52

LEASE No. \_\_\_\_\_  
PROPOSED WORK: DRILL X CONVERT DRILL DEEPER REDRILL FRACTURE OR STIMULATE PLUG OFF OLD FORMATION PERFORATE NEW FORMATION OTHER PHYSICAL CHANGE IN WELL (SPECIFY) \_\_\_\_\_  
PLUG AND ABANDON \_\_\_\_\_ CLEAN OUT AND REPLUG \_\_\_\_\_  
TARGET FORMATION POCAHONTAS NO. 3 ESTIMATED DEPTH 1295'  
WELL OPERATOR CDX GAS, LLC VICE PRESIDENT-OPERATIONS JOSEPH ZUPANICK  
ADDRESS P.O. BOX 609 ADDRESS P.O. BOX 609  
PINEVILLE, WV 24874 PINEVILLE, WV 24874

6-1 272

JAN 12 2001

WYO 1974C

State of West Virginia  
 Division of Environmental Protection  
 Section of Oil & Gas

109-01974C  
 Reviewed 12/13

Well Operator's Report of Well Work

Farm name: U.S. Steel Mining Company

Operator Well No: 91-D

Location: Elevation: 2024.99

Quadrangle: Pineville

District: Center

County: WYOMING

Latitude: 11050 Feet South of 37 Deg. 32 Min. 30 Sec.  
 Longitude: 2650 Feet West of 81 Deg. 35 Min. 00 Sec.

Company: CDX Gas, LLC  
P.O. Box 609  
Pineville, WV 24874

Agent: JOSEPH A. ZUPANICK

Inspector: OFIE HELMICK  
 Permit Issued: 1/11/01  
 Well Work commenced: 4/12/01  
 Well Work completed: 9/26/01  
 Verbal plugging  
 Permission granted on:  
 Rotary x Cable \_\_\_\_\_ Rig  
 Total depth (ft) 1366'  
 Fresh water depths (ft) N/A  
 Salt water depths (ft) N/A  
 Is coal being mined in the area (Y/N)? Y  
 Coal depths (ft): 134', 542', 937', 1177', 1242', 1296'

Casing & Tubing Size	Used in Drilling	Left in Well	Cement Fill up
13 3/8"	20'	20'	Surface
9 5/8"	241'	241'	Surface
7"	1194'	1194'	Surface
2 7/8"		1282'	Hanging

Permitting  
 OCT 15 2002  
 WV Department of Environmental Protection

OPEN FLOW DATA

Producing formation Pocahontas No. 3 Seam  
 Gas: Initial open flow N/A Mcf/d  
 Final open flow N/A Mcf/d  
 Time of open flow between initial and final tests: \_\_\_\_\_ hours  
 Static rock pressure \_\_\_\_\_ psig (surface pressure) after \_\_\_\_\_ hours

Pay zone depth (ft) 1296  
 Oil: Initial open flow \_\_\_\_\_ Bbl/d  
 Final open flow \_\_\_\_\_ Bbl/d

Second Producing formation \_\_\_\_\_  
 Gas: Initial open flow \_\_\_\_\_ Mcf/d  
 Final open flow \_\_\_\_\_ Mcf/d  
 Time of open flow between initial and final tests: \_\_\_\_\_ hours  
 Static rock pressure \_\_\_\_\_ psig (surface pressure) after \_\_\_\_\_ hours

Pay zone depth (ft) \_\_\_\_\_  
 Oil: Initial open flow \_\_\_\_\_ Bbl/d  
 Final open flow \_\_\_\_\_ Bbl/d

Note: ON BACK OF THIS FORM, PUT THE FOLLOWING: 1) DETAILS OF PERFORATED INTERVALS, FRACTURING OR STIMULATING, PHYSICAL CHANGE, ETC. 2) THE WELL LOG WHICH IS A SYSTEMATICK DETAILED GEOLOGICAL RECORD OF ALL FORMATIONS, INCLUDING COAL ENCOUNTERED BY THE WELLBORE.

For: Steven Pauley  
 CDX Gas, LLC  
 By: Steven Pauley  
 Date: 5-22-02

OCT 25 2002

WYO 1974 C

Details of Perforated Intervals, Fracturing or Stimulation, Physical Change, Etc.

N/A

Well Log & Geologic Record - Depths from K.B.

Formation	Top	Bottom
Overburden	0	5
Shale	5	70
Sandy shale	70	106
Shale	106	134
Coal	134	136
Sandy shale	136	210
Shale	210	305
Sandy shale	305	380
Shale	380	415
Sandy shale	415	475
Shale	475	542
Coal	542	544
Shale	544	578
Sandy shale	578	762
Shale	762	829
Sandy shale	829	879
Shale	879	937
Coal	937	941
Shale	941	945
Sandy shale	945	1010
Shale	1010	1023
Sandy shale	1023	1050
Sandstone	1050	1152
Sandy shale	1152	1177
Coal	1177	1179
Shale	1179	1208
Sandy Shale	1208	1242
Coal	1242	1245
Sandy shale	1245	1286
Shale	1286	1296
Coal	1296	1301
Sandy Shale	1301	1366

