



Diversified Gas & Oil Corporation
 100 Diversified Way
 Pikeville KY, 41051

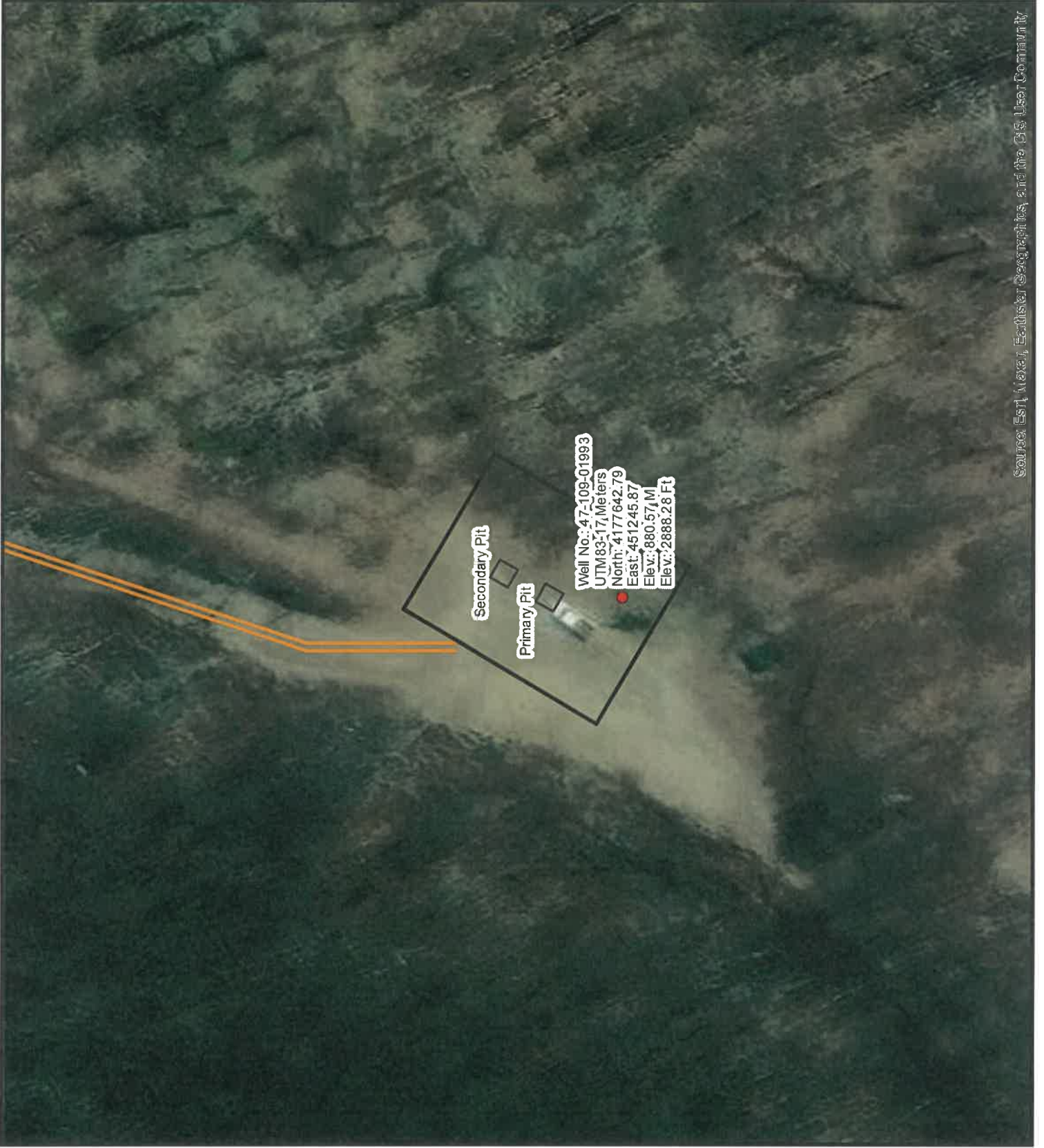
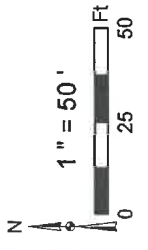
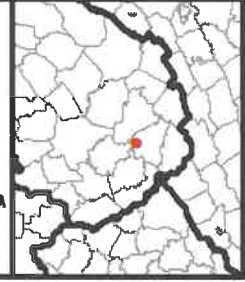
47-109-01993

Well Plugging Map

Legend

- Well
- Pits
- Pad
- Access Road
- Public Roads

RECEIVED
 Office of Oil and Gas
 APR 09 2026
 WV Department of
 Environmental Protection



Source: Esri, Maxar, Earthstar Geographics, and the US User Community

06/05/2026

WW-7
8-30-06

RECEIVED
Office of Oil and Gas

APR 09 2026

WV Department of
Environmental Protection



West Virginia Department of Environmental Protection
Office of Oil and Gas
WELL LOCATION FORM: GPS

API: 4710901993 WELL NO.: Loup Creek 72C

FARM NAME: Pocahontas Land Corp.

RESPONSIBLE PARTY NAME: Diversified Production, LLC

COUNTY: Wyoming DISTRICT: Oceana

QUADRANGLE: Matheny 7.5'

SURFACE OWNER: Pocahontas Surface Interests, LLC c/o Pocahontas Royalties, LLC

ROYALTY OWNER: Diversified ABS Phase X, LLC

UTM GPS NORTHING: 4177642.79

UTM GPS EASTING: 451245.87 GPS ELEVATION: 2888.28'

The Responsible Party named above has chosen to submit GPS coordinates in lieu of preparing a new well location plat for a plugging permit or assigned API number on the above well. The Office of Oil and Gas will not accept GPS coordinates that do not meet the following requirements:

- Datum: NAD 1983, Zone: 17 North, Coordinate Units: meters, Altitude: height above mean sea level (MSL) – meters.
- Accuracy to Datum – 3.05 meters
- Data Collection Method:

Survey grade GPS : Post Processed Differential

Real-Time Differential

Mapping Grade GPS : Post Processed Differential

Real-Time Differential

- Letter size copy of the topography map showing the well location.**

I the undersigned, hereby certify this data is correct to the best of my knowledge and belief and shows all the information required by law and the regulations issued and prescribed by the Office of Oil and Gas.

Signature

Chris Veazey - Director of Administration

Title

2/12/2026

Date

06/05/2026