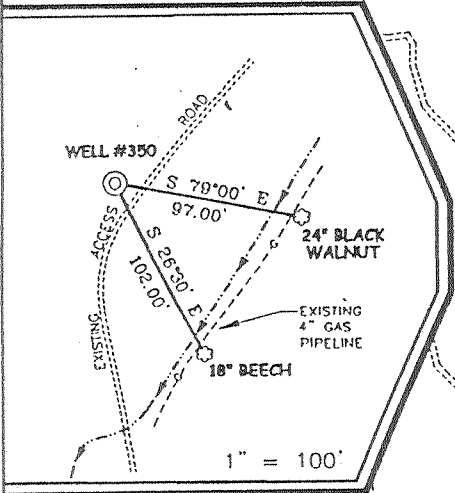


W.M. RITTER LUMBER COMPANY LEASE

65,000 ACRES± TOTAL

WELL NO. 350

REFERENCES



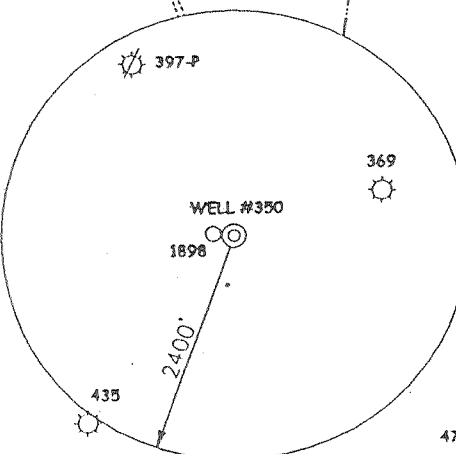
WELL NO. 350
STATE PLANE
COORDINATES

(N) 243,992
(E) 1,777,245

U.S.A.
612.34 AC±
TRACT #1601

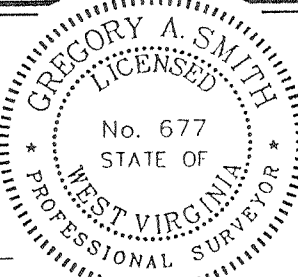
ANNE STOKES
LEASE

U.S.A.
TRACT #1600



I THE UNDERSIGNED, HEREBY CERTIFY THAT THIS PLAT IS CORRECT TO THE BEST OF MY KNOWLEDGE AND BELIEF AND SHOWS ALL THE INFORMATION REQUIRED BY LAW AND THE REGULATIONS ISSUED AND PRESCRIBED BY THE DEPARTMENT OF ENERGY.

P.S. 677 *Gregory A. Smith*



(+) DENOTES LOCATION OF WELL ON UNITED STATES TOPOGRAPHIC MAPS.

DATE OCTOBER 10, 2000
OPERATORS WELL NO. RITTER #350
API WELL NO. 47-109-02006
STATE COUNTY PERMIT

MINIMUM DEGREE OF ACCURACY 1 / 2500 FILE NO. 3999P350 (96-20)
PROVEN SOURCE OF ELEVATION BENCH MARK ELEVATION 1154' SCALE 1" = 1000'

STATE OF WEST VIRGINIA
DIVISION OF ENVIRONMENTAL PROTECTION
OFFICE OF OIL AND GAS



WELL TYPE: OIL GAS LIQUID INJECTION WASTE DISPOSAL IF "GAS" PRODUCTION STORAGE DEEP SHALLOW

LOCATION: ELEVATION 1319' WATERSHED SYCAMORE BRANCH OF BIG CUB CREEK
DISTRICT CLEAR FORK COUNTY WYOMING QUADRANGLE MALLORY 7.5'

SURFACE OWNER U.S.A. (R.D. BAILEY LAKE) TRACT #1675 ACREAGE 1747.62
ROYALTY OWNER NORTH AMERICAN TIMBER CORP. LEASE ACREAGE 65,000
PROPOSED WORK: LEASE NO. 04157

DRILL CONVERT DRILL DEEPER REDRILL FRACTURE OR STIMULATE PLUG OFF OLD FORMATION PERFORATE NEW FORMATION PLUG AND ABANDON CLEAN OUT AND REPLUG OTHER

PHYSICAL CHANGE IN WELL (SPECIFY) _____ TARGET FORMATION DEVONIAN SHALE
ESTIMATED DEPTH 5900'

WELL OPERATOR EQUITABLE PRODUCTION COMPANY DESIGNATED AGENT STEVEN PERDUE
ADDRESS P.O. BOX 2347 CHARLESTON, WV 25328 ADDRESS P.O. BOX 2347 CHARLESTON, WV 25328

DEEP WELL

6-6 266

LAT. 37°40'03.1"

COUNTY NAME WYO
PERMIT 2006

State of West Virginia
Division of Environmental Protection
Section of Oil and Gas

ALB

Well Operator's Report of Well Work

Farm Name: U.S.A. (Bailey Lake) Operator Well No.: Ritter 350
LOCATION: Elevation: 1,319.00 Quadrangle: Mallory (WV-506120)
District: Clear Fork County: Wyoming

Latitude: 14830 Feet South of Deg. 37 Minutes 42 Seconds 30
Longitude: 5670 Feet West of Deg. 81 Minutes 45 Seconds 0

Company: **EQUITABLE PRODUCTION COMPANY**
P.O. Box 2347, 1710 Pennsylvania Avenue
Charleston, WV 25328

Agent: Steve Perdue

Inspector: Ofie Helmick

Permit Issued: 04/17/2001
Well work commenced: 05/29/01
Well work completed: 07/02/01

Verbal Plugging

Permission granted on: _____

Rotary Rig X Cable Rig _____

Total Depth 6130' feet

Fresh water depths (ft) 7', 12', 70', 230'

Salt water depths (ft) 925'

Casing & Tubing Size	Used in Drilling	Left in Well	Cement Fill Up Cu. Ft.
16"	40'	40'	Grtd
13-3/8"	47'	47'	Grtd
9-5/8"	365'	365'	171 FT ³
7"	2506'	2506'	483 FT ³
4-1/2"	5733'	5733'	459 FT ³

is coal being mined in area? _____
Coal Depths (ft): 75', 89', 123', 315', 434', 783'

OPEN FLOW DATA

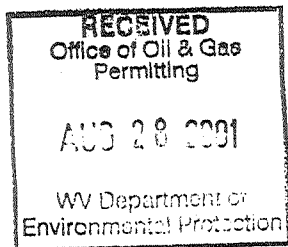
Producing formation L Shale, U Shale, Berea, Big Lime Pay Zone Depth (ft): _____ See Attach for details

Gas: Initial open flow 15 Bbl/d
 Final open flow 1136 Final open flow: _____
 Time of open flow between initial and final tests _____ Hours
 Static rock pressure 470 psig (surface pressure) after _____ Hours

Second producing formation _____ Pay Zone Depth (ft): _____

Gas: Initial open flow _____ MCF/d Oil: Initial open flow _____ Bbl/d
 Final open flow: _____ MCF/d Final open flow: _____
 Time of open flow between initial and final tests _____ Hours
 Static rock pressure _____ psig (surface pressure) after _____ Hours

NOTE: ON BACK OF THIS FORM PUT THE FOLLOWING: 1) DETAILS OF PERFORATED INTERVALS, FRACTURING OR STIMULATING, PHYSICAL CHANGE, ETC. 2) THE WELL LOG WHICH IS A SYSTEMATIC DETAILED GEOLOGICAL RECORD OF ALL FORMATIONS, INCLUDING COAL ENCOUNTERED BY THE WELLBORE.



For: EQUITABLE PRODUCTION CO.

By: *Robert J. Davis*
Date: 8/27/01

AUG 31 2001

WYO 2006

**EQUITABLE PRODUCTION COMPANY
WR-35 COMPLETION REPORT - Attachment
Well Treatment Summary**

Well: WV-506120-Ritter 350

API# 47-109-02006

Date	6/21/2001	6/21/2001	6/21/2001	6/21/2001
Type Frac				
Acid, N ₂ , Foam, Water	N ²	N ²	N ²	Acid/N ²
Zone Treated	L Shale	U Shale	Berea	Big Lime
# Perfs	40	40	22	17
From - To:	4808-5632	3654-4679	3476-3504	2609-2846
BD Pressure @ psi	3211	2618	2352	1656
ATP psi	3050	1951	2567	1885
Avg. Rate, B=B/M, S= SCF/M	47,657 S	53,260 S	50,000 S	7 B
Max. Treat Press psi	3182	2352	3223	2665
ISIP psi	2411	1760	2218	931
	Final	Final	Final	
Frac Gradient	.55	.49	.72	.80
10 min S-l Pressure	1923	1352	1244	1270
	5 min	5 min	5 min	5 min
Material Volume				
Sand-sks				
Water-bbl	17			3
SCF N ₂	1,035,510	734,620	598,837	98,573
Acid-gal	672 gal	800 gal	250 gal	3000 gal
	7.5%	8.4%	14.8%	14.8%
NOTES:				

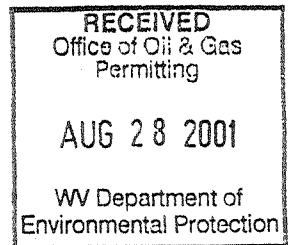
TOP	BASE	FORMATION
0	20	Fill
20	25	Gray Muck
25	29	Sand & Rock
29	75	Sand
75	77	Coal
77	89	Sand Shale
89	90	Coal
90	123	Sand Shale
123	125	Coal
125	178	Sand
178	315	Shale
315	318	Coal
318	434	Sand Shale
434	436	Coal
436	520	Sand
520	595	Sand Shale
595	700	Sand
700	783	Shale & Sand
783	785	Coal
785	1160	Sand & Shale
1160	1223	Salt Sand
1223	1280	Shale
1280	1350	Salt Sand
1350	1415	Shale
1415	1480	Salt Sand
1480	1498	Shale
1498	1795	Sand Shale
1795	1826	Sand
1826	1933	Sand & Shale
1933	2012	Sand
2012	2028	U Maxton

REMARKS*
1/2" stream water @ 7', 1" @ 12'

2" stream water @ 70'

4" stream water @ 230'

1/4" stream water @ 925'



AUG 31 2001

2028
2394
2441
2496
2573
3010
3453
3471
3783
4539
4553
5033
5172
5418
5678
5716
6130

2394
2441
2496
2556
2889
3126
3471
3511
3793
5033
4609
5172
5418
5678
5716

Sand & Shale
L Maxton
Shale
L Lime
Big Lime
Weir
Sunbury
Berea
Gordon
L Huron
L Huron Siltstone
Java
Angola
Rhinstreet
Marcellus
Onondaga
TD

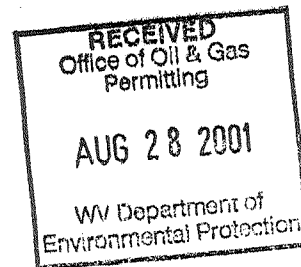
GT @ 2455'=15 mcf/d

GT @ 2647', 2863', 2986'=NS

GT @ 3417', 3787', 3850', 4257', 4566'=odor

GT @ 5211', 5343', 5614', 5832'=15 mcf/d

GT @ TD=odor



AUG 31 2001

WVD 2006