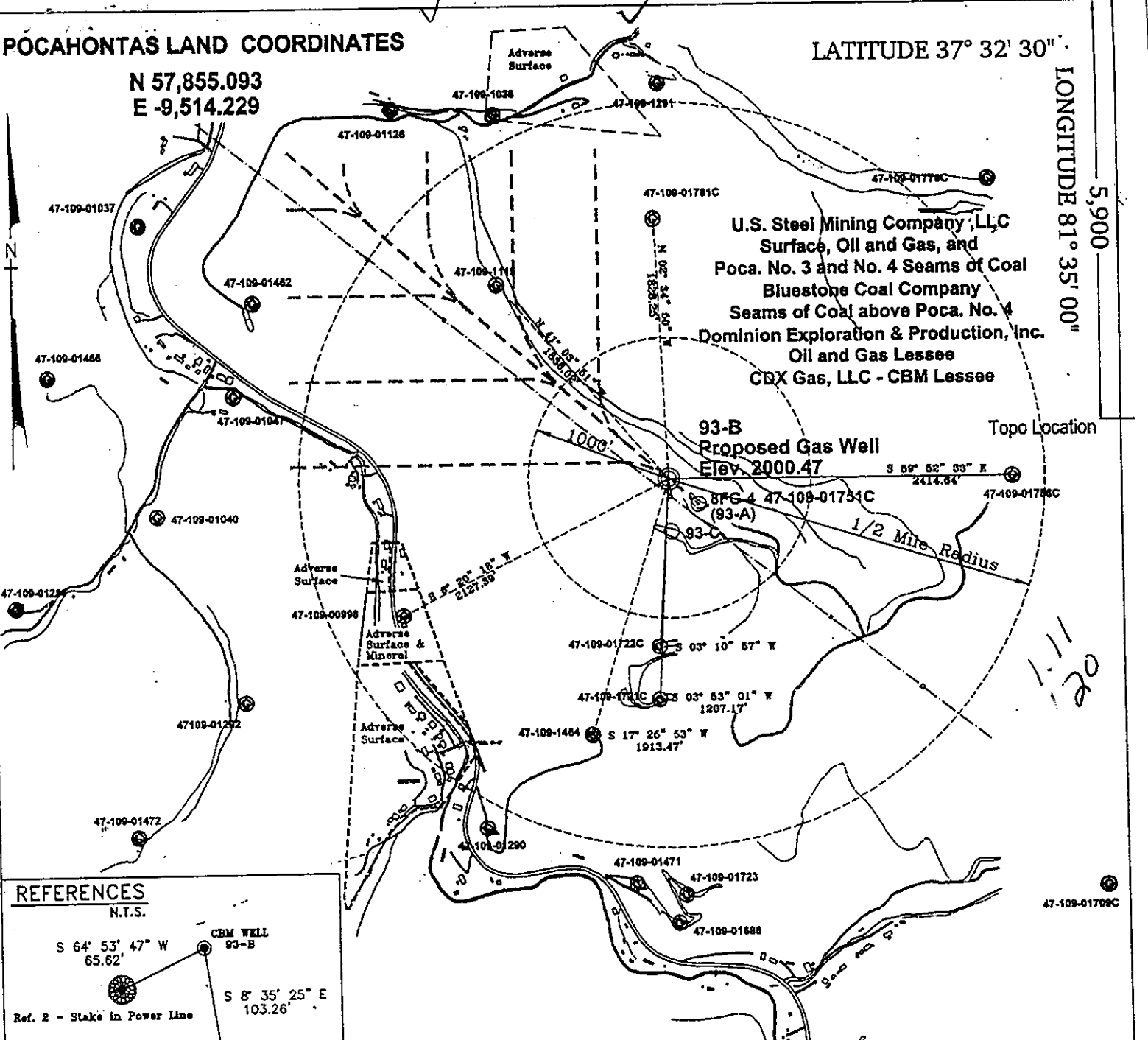


POCAHONTAS LAND COORDINATES

N 57,855.093
E -9,514.229

LATITUDE 37° 32' 30"

LONGITUDE 81° 35' 00"



U.S. Steel Mining Company, LLC
Surface, Oil and Gas, and
Poca. No. 3 and No. 4 Seams of Coal
Bluestone Coal Company
Seams of Coal above Poca. No. 4
Dominion Exploration & Production, Inc.
Oil and Gas Lessee
CDX Gas, LLC - CBM Lessee

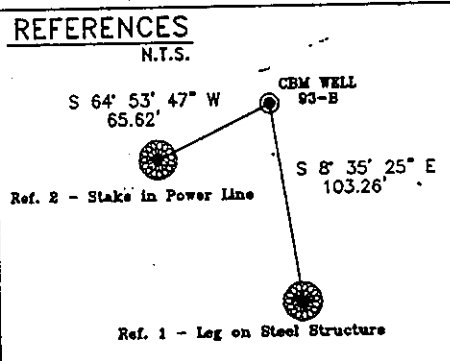
**93-B
Proposed Gas Well
Elev. 2000.47**

Topo Location

S 80° 52' 53" E
2414.84'

1/2 Mile Radius

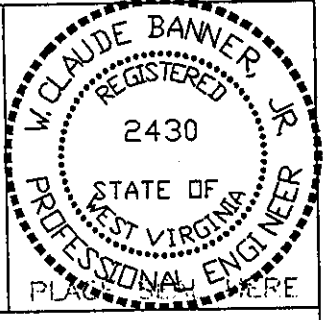
Notes:
No known domestic water supplies within 1000 feet.
(+) Denotes location of well on USGS map.



FILE No. CDXGAS
DRAWING NAME \CDXGAS\PLAT
FILE NAME 93-B
SCALE 1" = 1000'
MINIMUM DEGREE OF ACCURACY 1 : 2500
PROVEN SOURCE OF ELEVATION BENCH-MARK
F-44 EL. 1565

I THE UNDERSIGNED, HEREBY CERTIFY THAT THIS PLAT IS CORRECT TO THE BEST OF MY KNOWLEDGE AND BELIEF AND SHOWS ALL THE INFORMATION REQUIRED BY LAW AND THE REGULATIONS ISSUED AND PRESCRIBED BY THE DEPARTMENT OF MINES.

(SIGNED) W. Claude Banner Jr.
R.P.E. 2430 R.P.S.



**STATE OF WEST VIRGINIA
DIVISION OF ENVIRONMENTAL PROTECTION
OFFICE OF OIL AND GAS
NITRO, WV**

DATE JUNE 21, 2001
OPERATOR'S WELL No. 93-B
API WELL No. 47 - 109 - 02085C
STATE COUNTY PERMIT

WELL TYPE: OIL GAS CBM LIQUID INJECTION WASTE DISPOSAL
(IF "GAS") PRODUCTION X STORAGE DEEP SHALLOW
LOCATION: ELEVATION 2000.47 WATER SHED UNNAMED TRIBUTARY OF LICK BRANCH OF INDIAN CREEK
DISTRICT CENTER COUNTY WYOMING
QUADRANGLE PINEVILLE, WV

SURFACE OWNER U.S. STEEL MINING COMPANY, LLC ACREAGE 37977.66
CBM ROYALTY OWNER U.S. STEEL MINING COMPANY, LLC LEASE ACREAGE 4498.52

PROPOSED WORK: DRILL X CONVERT DRILL DEEPER REDRILL FRACTURE OR STIMULATE PLUG OFF OLD FORMATION PERFORATE NEW FORMATION OTHER PHYSICAL CHANGE IN WELL (SPECIFY)

PLUG AND ABANDON CLEAN OUT AND REPLUG
TARGET FORMATION POCAHONTAS NO. 3 AND PENN. COALS
WELL OPERATOR CDX GAS, LLC
ADDRESS P.O. BOX 609 PINEVILLE, WV 24874
ESTIMATED DEPTH 1245'
DESIGNATED AGENT JOSEPH ZUPANICK
ADDRESS P.O. BOX 609 PINEVILLE, WV 24874

6-6 272

AUG 17 2001

WYO 2085C

State of West Virginia
Division of Environmental Protection
Section of Oil & Gas

Reviewed AB

Well Operator's Report of Well Work

Farm name: U.S. Steel Mining Company

Operator Well No: 93-B

Location: Elevation: 2025.06'

Quadrangle: Pineville

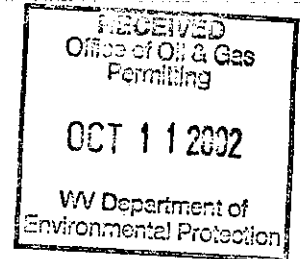
District: Center

County: WYOMING

Latitude: 5,900 Feet South of 37 Deg. 32 Min. 30 Sec.
Longitude: 0 Feet West of 81 Deg. 35 Min. 00 Sec.

Company: CDX Gas, LLC
P.O. Box 609
Pineville, WV 24874

1,115
0
? 1,200



Agent: JOSEPH A. ZUPANICK

Inspector: Ronnie Scott
Permit Issued: 08/16/01
Well Work commenced: 06/10/02
Well Work completed: 7/15/02
Verbal plugging
Permission granted on:
Rotary x Cable _____ Rig
Total depth (ft) 1276.64'
Fresh water depths (ft) N/A
Salt water depths (ft) N/A
Is coal being mined in the area (Y/N)? Y
Coal depths (ft): 76', 142', 862', 867', 1220'

Casing & Tubing Size	Used in Drilling	Left in Well	Cement Fill up
13 3/8"	20'	20'	Surface
9 5/8"	484.58'	484.58'	Surface
7"	1151.05'	1151.05'	Surface

OPEN FLOW DATA

Producing formation Pocahontas No. 3 Seam Pay zone depth (ft) 1220'
 Gas: Initial open flow N/A Mcf/d Oil: Initial open flow _____ Bbl/d
 Final open flow N/A Mcf/d Final open flow _____ Bbl/d
 Time of open flow between initial and final tests: _____ hours
 Static rock pressure _____ psig (surface pressure) after _____ hours

Second Producing formation _____ Pay zone depth (ft) _____
 Gas: Initial open flow N/A Mcf/d Oil: Initial open flow _____ Bbl/d
 Final open flow N/A Mcf/d Final open flow _____ Bbl/d
 Time of open flow between initial and final tests: _____ hours
 Static rock pressure _____ psig (surface pressure) after _____ hours

Note: ON BACK OF THIS FORM, PUT THE FOLLOWING: 1) DETAILS OF PERFORATED INTERVALS, FRACTURING OR STIMULATING, PHYSICAL CHANGE, ETC. 2) THE WELL LOG WHICH IS A SYSTEMATICK DETAILED GEOLOGICAL RECORD OF ALL FORMATIONS, INCLUDING COAL ENCOUNTERED BY THE WELLBORE.

For: Steven Pauley
CDX Gas, LLC
By: Steven Pauley
Date: 10-8-02

OCT 25 2002

WYO 2085 C

Details of Perforated Intervals, Fracturing or Stimulation, Physical Change, Etc.

N/A

Well Log & Geologic Record - Depths from G.L.

Formation	Top	Bottom
Overburden	0	8
Sandy Shale	8	43
Shale	43	76
Coal	76	78
Shale	78	92
Sandy Shale	92	140
Shale	140	142
Coal	142	143
Shale	143	161
Sandy Shale	161	198
Shale	198	220
Sandy Shale	220	253
Shale	253	260
Sandy Shale	260	271
Shale	271	281
Sandy Shale	281	305
Shale	305	356
Sandy Shale	356	395
Shale	395	436
Sandy Shale	436	594
Shale	594	624
Sandy Shale	624	673
Shale	673	690
Sandy Shale	690	700
Shale	700	715
Sandy Shale	715	840
Shale	840	862
Coal	862	865
Shale	865	867
Coal	867	868
Sandy Shale	868	880
Shale	880	898
Sandy Shale	898	920



OCT 25 2002

