

Exhibit A

General Location Map

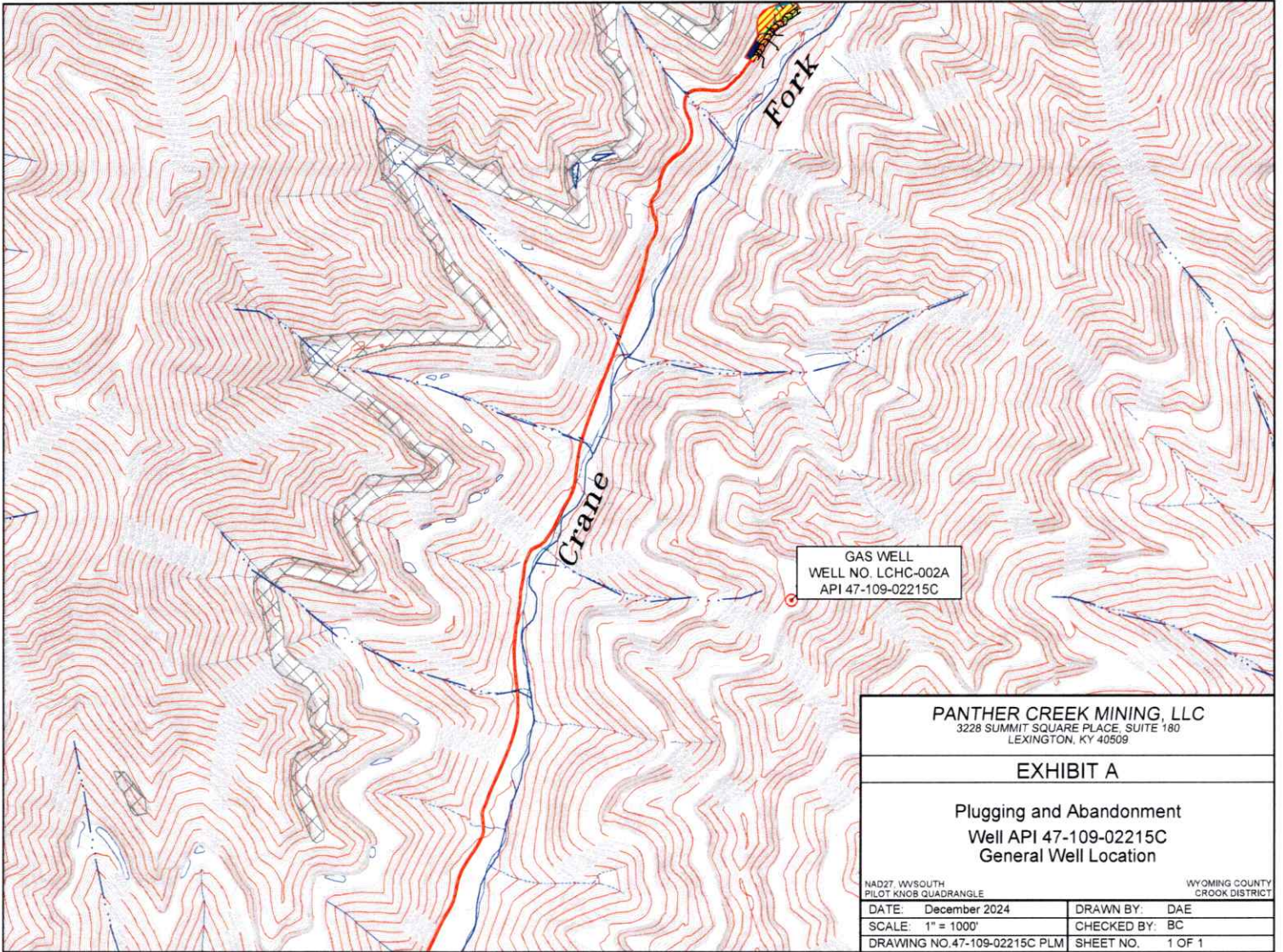
API Well No. 47-109-02215

RECEIVED
Office Of Oil and Gas

FEB 14 2025

WV Department of
Environmental Protection

03/14/2025



GAS WELL
 WELL NO. LCHC-002A
 API 47-109-02215C

PANTHER CREEK MINING, LLC
 3228 SUMMIT SQUARE PLACE, SUITE 180
 LEXINGTON, KY 40509

EXHIBIT A

Plugging and Abandonment
 Well API 47-109-02215C
 General Well Location

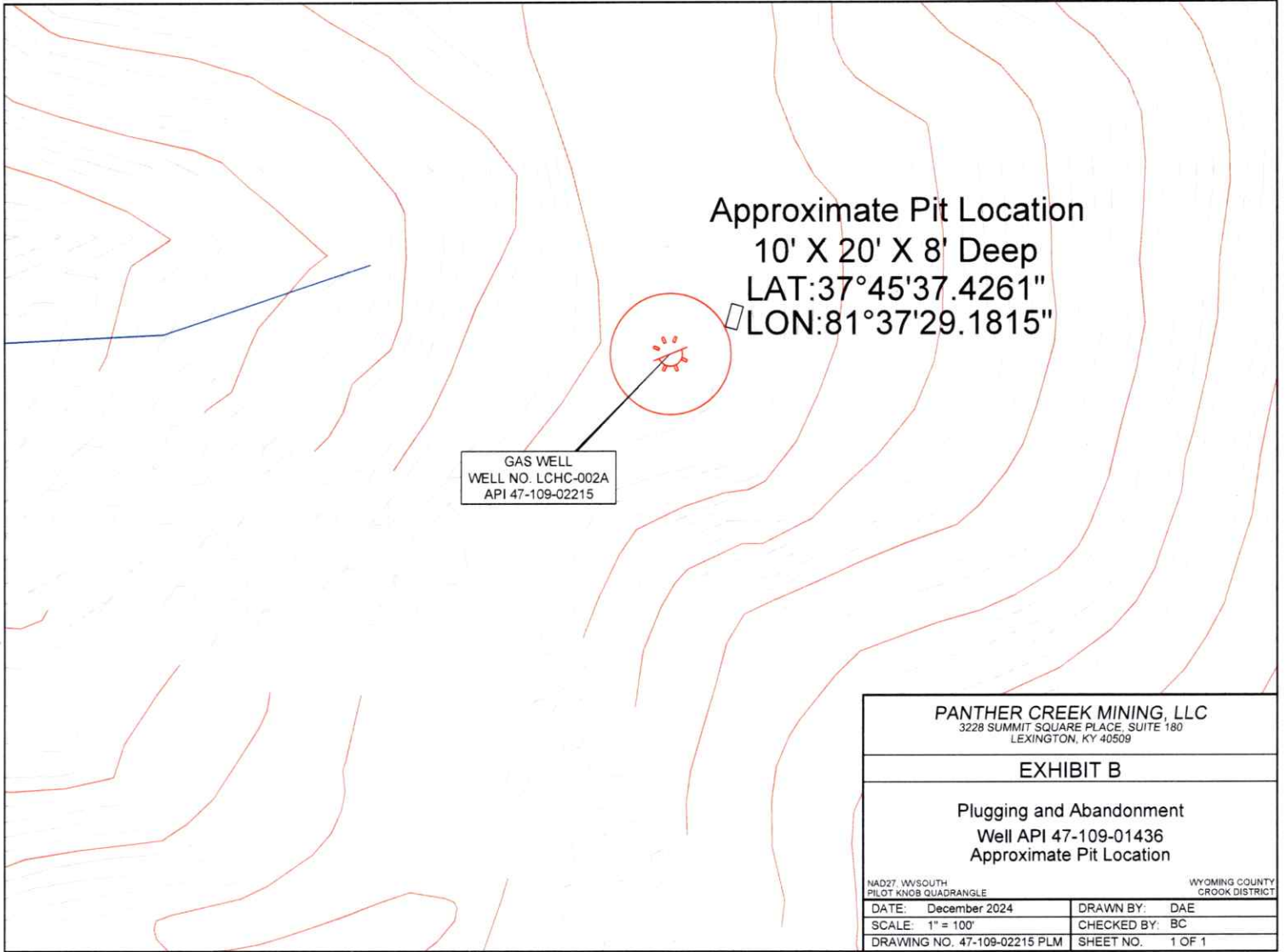
NAD27, WVSOUTH PILOT KNOB QUADRANGLE		WYOMING COUNTY CROOK DISTRICT	
DATE: December 2024	DRAWN BY: DAE		
SCALE: 1" = 1000'	CHECKED BY: BC		
DRAWING NO. 47-109-02215C PLM	SHEET NO. 1 OF 1		

03/14/2025

Exhibit B

Approximate Pit Location Map

API Well No. 47-109-02215



GAS WELL
WELL NO. LCHC-002A
API 47-109-02215

Approximate Pit Location
10' X 20' X 8' Deep
LAT:37°45'37.4261"
LON:81°37'29.1815"

PANTHER CREEK MINING, LLC <small>3228 SUMMIT SQUARE PLACE, SUITE 180 LEXINGTON, KY 40509</small>	
EXHIBIT B	
Plugging and Abandonment Well API 47-109-01436 Approximate Pit Location	
<small>NAD27 W/SOUTH PILOT KNOB QUADRANGLE WYOMING COUNTY CROOK DISTRICT</small>	
DATE: December 2024	DRAWN BY: DAE
SCALE: 1" = 100'	CHECKED BY: BC
DRAWING NO. 47-109-02215 PLM	SHEET NO. 1 OF 1

03/14/2025

WW-7
8-30-06



West Virginia Department of Environmental Protection
Office of Oil and Gas

WELL LOCATION FORM: GPS

API: 47-109-02215 WELL NO.: LCHC-002A

FARM NAME: Pocahontas Land Corp.

RESPONSIBLE PARTY NAME: Panther Creek Mining, LLC

COUNTY: Wyoming DISTRICT: Oceana

QUADRANGLE: Pilot Knob

SURFACE OWNER: Pocahontas Land Corp.

ROYALTY OWNER: _____

UTM GPS NORTHING: 4179496.18

UTM GPS EASTING: 454548.24 GPS ELEVATION: 2455.03

The Responsible Party named above has chosen to submit GPS coordinates in lieu of preparing a new well location plat for a plugging permit or assigned API number on the above well. The Office of Oil and Gas will not accept GPS coordinates that do not meet the following requirements:

- Datum: NAD 1983, Zone: 17 North, Coordinate Units: meters, Altitude: height above mean sea level (MSL) – meters.
- Accuracy to Datum – 3.05 meters
- Data Collection Method:

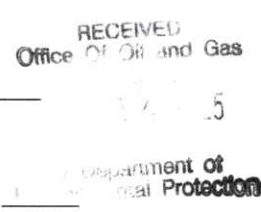
Survey grade GPS : Post Processed Differential _____
Real-Time Differential

Mapping Grade GPS _____ : Post Processed Differential _____
Real-Time Differential _____

- Letter size copy of the topography map showing the well location.**

I the undersigned, hereby certify this data is correct to the best of my knowledge and belief and shows all the information required by law and the regulations issued and prescribed by the Office of Oil and Gas.

<u>Brian P. Chapman</u>	<u>Senior Engineer</u>	<u>12/19/2024</u>
Signature	Title	Date



03/14/2025