

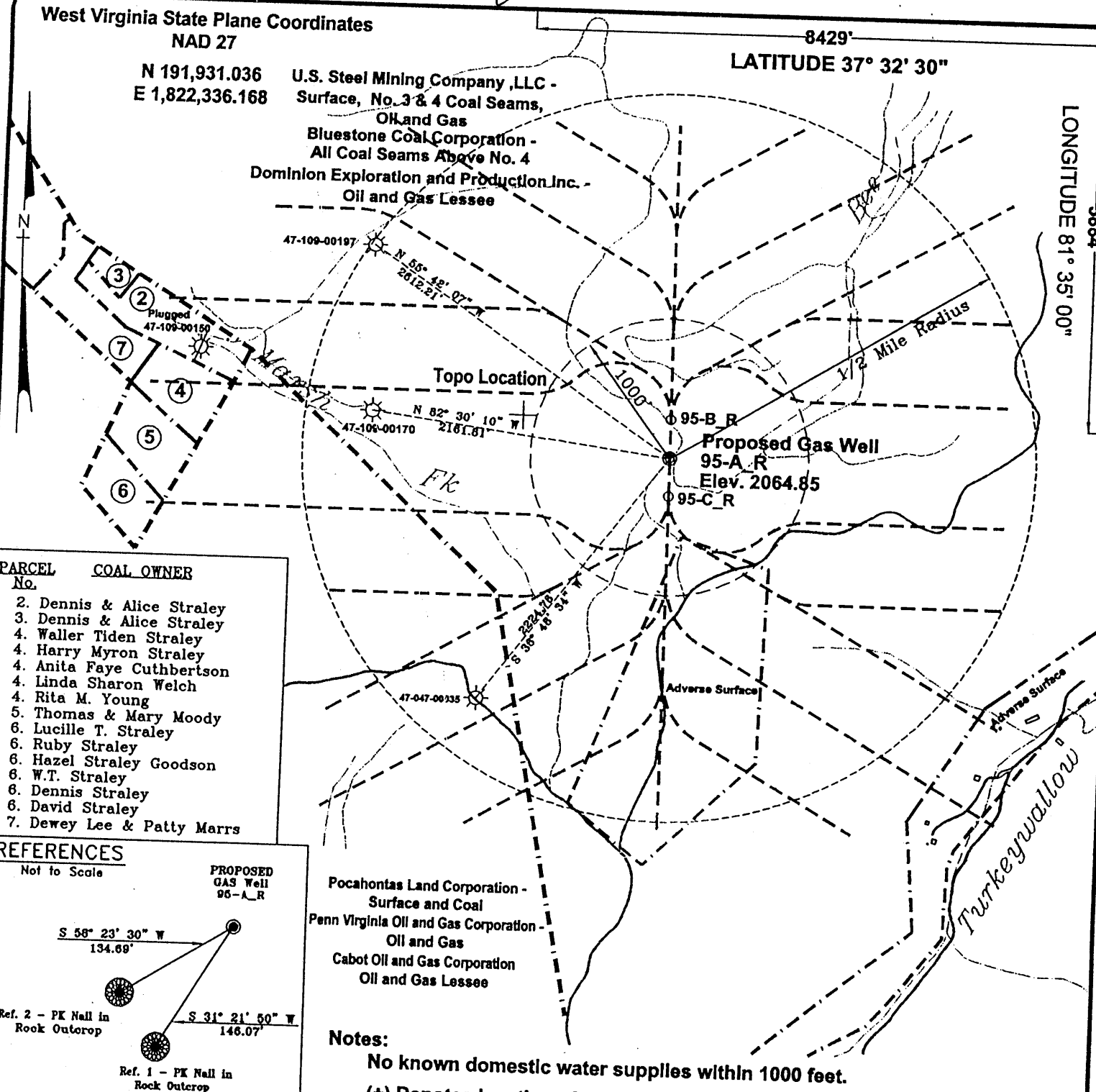
West Virginia State Plane Coordinates  
NAD 27

N 191,931.036  
E 1,822,336.168

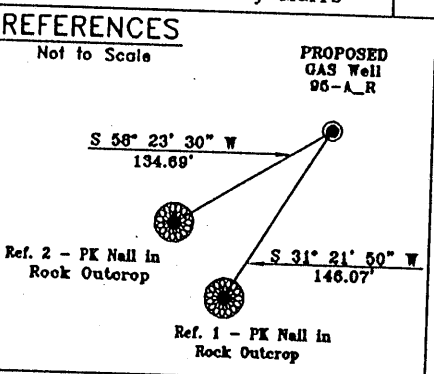
U.S. Steel Mining Company, LLC -  
Surface, No. 3 & 4 Coal Seams,  
Oil and Gas  
Bluestone Coal Corporation -  
All Coal Seams Above No. 4  
Dominion Exploration and Production Inc. -  
Oil and Gas Lessee

8429'  
LATITUDE 37° 32' 30"

5884'  
LONGITUDE 81° 35' 00"



PARCEL No.	COAL OWNER
2.	Dennis & Alice Straley
3.	Dennis & Alice Straley
4.	Waller Tiden Straley
4.	Harry Myron Straley
4.	Anita Faye Cuthbertson
4.	Linda Sharon Welch
4.	Rita M. Young
5.	Thomas & Mary Moody
6.	Lucille T. Straley
6.	Ruby Straley
6.	Hazel Straley Goodson
6.	W.T. Straley
6.	Dennis Straley
6.	David Straley
7.	Dewey Lee & Patty Marrs



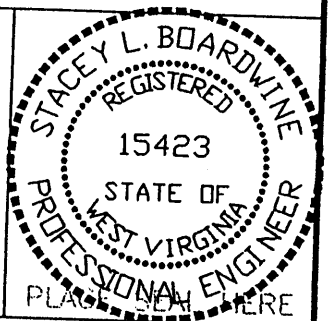
Pocahontas Land Corporation -  
Surface and Coal  
Penn Virginia Oil and Gas Corporation -  
Oil and Gas  
Cabot Oil and Gas Corporation  
Oil and Gas Lessee

Notes:  
No known domestic water supplies within 1000 feet.  
(+) Denotes location of well on USGS map.

FILE No. CDXGAS  
DRAWING NAME \CDX-2003\PLAT 95-A\_R  
DRAWING NAME Plat95-A\_R  
SCALE 1" = 1000'  
MINIMUM DEGREE OF ACCURACY 1 : 2500  
PROVEN SOURCE OF ELEVATION GPS - GLOBAL POSITIONING SYSTEM

I THE UNDERSIGNED, HEREBY CERTIFY THAT THIS PLAT IS CORRECT TO THE BEST OF MY KNOWLEDGE AND BELIEF AND SHOWS ALL THE INFORMATION REQUIRED BY LAW AND THE REGULATIONS ISSUED AND PRESCRIBED BY THE DEPARTMENT OF MINES.

(SIGNED) Stacey L Boardwine  
R.P.E. 15423 R.P.S. \_\_\_\_\_



STATE OF WEST VIRGINIA  
DEPARTMENT OF ENVIRONMENTAL PROTECTION  
OFFICE OF OIL AND GAS  
CHARLESTON, WV

DATE May 01, 2003  
OPERATOR'S WELL No. 95-A\_R  
API WELL No. 47 - 109 - 02277C  
STATE COUNTY PERMIT

WELL TYPE: OIL GAS CBM LIQUID INJECTION WASTE DISPOSAL  
(IF "GAS") PRODUCTION X STORAGE DEEP SHALLOW  
LOCATION: ELEVATION 2064.85 WATER SHED MARSH FORK OF BRIER CREEK OF INDIAN CREEK  
DISTRICT CENTER COUNTY WYOMING  
QUADRANGLE PINEVILLE, WV

SURFACE OWNER U.S. STEEL MINING COMPANY, LLC ACREAGE 33,742.55  
CBM ROYALTY OWNER U.S. STEEL MINING COMPANY, LLC LEASE ACREAGE \_\_\_\_\_  
PENN VIRGINIA OIL AND GAS CORPORATION  
LEASE No. \_\_\_\_\_

PROPOSED WORK: DRILL X CONVERT DRILL DEEPER REDRILL FRACTURE OR STIMULATE PLUG OFF OLD FORMATION PERFORATE NEW FORMATION OTHER PHYSICAL CHANGE IN WELL (SPECIFY)

PLUG AND ABANDON CLEAN OUT AND REPLUG  
TARGET FORMATION POCAHONTAS NO. 3 AND PENN. COALS  
WELL OPERATOR CDX GAS, LLC ESTIMATED DEPTH 1297'  
ADDRESS P.O. BOX 609 DESIGNATED AGENT JOSEPH ZUPANICK  
PINEVILLE WV 24871 (Railroad 277) ADDRESS P.O. BOX 609

JUN 06 2003

WYO 2277C

State of West Virginia  
Division of Environmental Protection  
Section of Oil & Gas

*Mtz*

Well Operator's Report of Well Work

Farm name: U.S. Steel Mining Company

Operator Well No: 95-A-R

Location: Elevation: 2064.85

Quadrangle: Pineville

District: Center

County: Wyoming

Latitude: 8429 Feet South of 37 Deg. 32 Min. 30 Sec.  
Longitude: 5584 Feet West of 81 Deg. 35 Min. 00 Sec.

Company: CDX Gas, LLC  
P.O. Box 609  
Pineville, WV 24874

Agent: JOSEPH A. ZUPANICK

Inspector: Ronnie Scott  
Permit Issued: 6/4/03  
Well Work commenced: 7/17/03  
Well Work completed: 9/11/03

Verbal plugging  
Permission granted on:  
Rotary x Cable \_\_\_\_\_ Rig

Total depth (ft) 1148'  
Fresh water depths (ft) N/A  
Salt water depths (ft) N/A

Is coal being mined in the area (Y/N)? Y  
Coal depths (ft): 319', 392', 684'

RECEIVED  
Office of Oil & Gas  
Office of Chief  
OCT - 9 2003  
WV Department of Environmental Protection

Casing & Tubing Size	Used in Drilling	Left in Well	WV Department of Environmental Protection Fill up
13 3/8"	29'	29'	20
9 5/8"	610'	610'	191
7"	1077'	1077'	162

OPEN FLOW DATA

Producing formation Non-producer  
Gas: Initial open flow N/A Mcf/d  
Final open flow N/A Mcf/d  
Time of open flow between initial and final tests: \_\_\_\_\_ hours  
Static rock pressure \_\_\_\_\_ psig (surface pressure) after \_\_\_\_\_ hours

Pay zone depth (ft)  
Oil: Initial open flow \_\_\_\_\_ Bbl/d  
Final open flow \_\_\_\_\_ Bbl/d

Second Producing formation \_\_\_\_\_  
Gas: Initial open flow \_\_\_\_\_ Mcf/d  
Final open flow \_\_\_\_\_ Mcf/d  
Time of open flow between initial and final tests: \_\_\_\_\_ hours  
Static rock pressure \_\_\_\_\_ psig (surface pressure) after \_\_\_\_\_ hours

Pay zone depth \_\_\_\_\_ (ft)  
Oil: Initial open flow \_\_\_\_\_ Bbl/d  
Final open flow \_\_\_\_\_ Bbl/d

Note: ON BACK OF THIS FORM, PUT THE FOLLOWING: 1) DETAILS OF PERFORATED INTERVALS, FRACTURING OR STIMULATING, PHYSICAL CHANGE, ETC. 2) THE WELL LOG WHICH IS A SYSTEMATIC DETAILED GEOLOGICAL RECORD OF ALL FORMATIONS, INCLUDING COAL ENCOUNTERED BY THE WELLBORE.

Steven Pauley  
For: CDX Gas, LLC  
By: *Steven Pauley*  
Date: 10-6-03

NOV 14 2003

WYO 2277C

Operator: 95-A-R  
 API No. 47- 109-02277 C  
 Location: Wyoming County

Details of Perforated Intervals, Fracturing or Stimulation, Physical Change, Etc. – N/A

Well Log & Geologic Record - Depths from G.L.

Lithology	Depth in feet	
	Top	Bottom
Casing	0	15
Sandy Shale	15	89
Sandstone	89	96
Shale	96	154
Sandy Shale	154	303
Shale	303	319
Coal	319	320
Sandy Shale	320	392
Coal	392	393
Shale	393	426
Sandy Shale	426	485
Shale	485	539
Sandstone	539	569
Sandy Shale	569	684
Coal	684	685
Shale	685	700
Sandy Shale	700	750
Shale	750	790
Sandy Shale	790	880
Shale	880	933
Sandy Shale	933	1035
Sandstone	1035	1148
End		