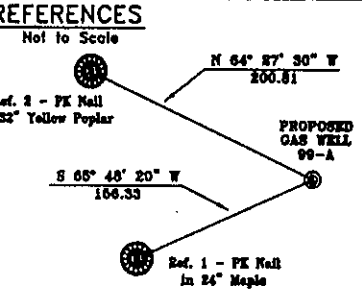


West Virginia
State Plane Coordinates
NAD 27
N 197,551.66
E 1,817,369.87



Notes:

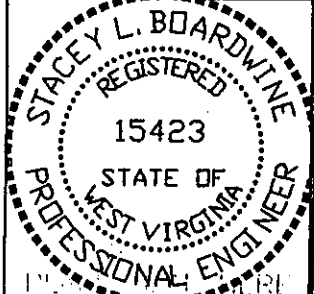
(+) Denotes location of well on USGS map.

West Virginia
 --- B-Horizontal Completion
 - - - C-Horizontal Completion
 ○ Proposed CBM Well

FILE No. CDXGAS
 DRAWING NAME \PLATS
 DRAWING NAME 99-A
 SCALE 1" = 1000'
 MINIMUM DEGREE OF ACCURACY 1 : 2500
 PROVEN SOURCE OF ELEVATION GPS - GLOBAL POSITIONING SYSTEM

I THE UNDERSIGNED, HEREBY CERTIFY THAT THIS PLAT IS CORRECT TO THE BEST OF MY KNOWLEDGE AND BELIEF AND SHOWS ALL THE INFORMATION REQUIRED BY LAW AND THE REGULATIONS ISSUED AND PRESCRIBED BY THE DEPARTMENT OF MINES.

(SIGNED) Stacy L Boardwine
 R.P.E. 15423 R.P.S. _____



STATE OF WEST VIRGINIA
DEPARTMENT OF ENVIRONMENTAL PROTECTION
OFFICE OF OIL AND GAS
CHARLESTON, WV

DATE December 23, 2003
 OPERATOR'S WELL No. 99-A
 API WELL No. 47 - 109 - 02373-C
 STATE COUNTY PERMIT

WELL TYPE: OIL GAS CBM LIQUID INJECTION WASTE DISPOSAL
 (IF "GAS") PRODUCTION X STORAGE DEEP SHALLOW

LOCATION: ELEVATION 1961.47 WATER SHED TRIBUTARY OF BRIER CREEK
 DISTRICT BAILEYSVILLE COUNTY WYOMING
 QUADRANGLE BAILEYSVILLE, WV

SURFACE OWNER PINNACLE LAND COMPANY, LLC ACREAGE 33,742.55
 CBM ROYALTY OWNER PINNACLE LAND COMPANY, LLC LEASE ACREAGE _____
REFER TO APPLICATION
 LEASE No. _____

PROPOSED WORK: DRILL X CONVERT DRILL DEEPER REDRILL FRACTURE OR STIMULATE PLUG OFF OLD FORMATION PERFORATE NEW FORMATION OTHER PHYSICAL CHANGE IN WELL (SPECIFY) _____

PLUG AND ABANDON CLEAN OUT AND REPLUG
 TARGET FORMATION POCAHONTAS NO. 3 AND PENN. COALS ESTIMATED DEPTH 1230'
 WELL OPERATOR CDX GAS, LLC DESIGNATED AGENT JOSEPH ZUPANICK
 ADDRESS P.O. BOX 609 ADDRESS P.O. BOX 609
PINEVILLE, WV 24874 PINEVILLE, WV 24874

(Baileysville 772) 1-1

WYO 2373-C

State of West Virginia
Division of Environmental Protection
Section of Oil & Gas
Well Operator's Report of Well Work

#2
RECENTLY
Completed

Farm name: Pinnacle Land Company

Operator W: _____

Location: Elevation: 1958.91'

Quadrangle: _____

District: Baileysville

County: _____

Latitude: 300 Feet South of 37 Deg. 32 Min. 30 Sec.
Longitude: 1350 Feet West of 81 Deg. 35 Min. 30 Sec.

Company: CDX Gas, LLC
P.O. Box 609
Pineville, WV 24874

Agent: JOSEPH A. ZUPANICK

Inspector: Raulph Triplett
Permit Issued: 01/15/2004
Well Work commenced: 4/12/04
Well Work completed: 8/7/04

Verbal plugging
Permission granted on:
Rotary x Cable _____ Rig
Total depth (ft) A-Completion 1176', B-Completion 1224', C-Completion 1287'

Fresh water depths (ft) N/A
Salt water depths (ft) N/A
Is coal being mined in the area (Y/N)? Y
Coal depths (ft): B-Completion Void@480,710,1183'
C-Completion Void@470, 707, 1180'

Casing & Tubing Size	Used in Drilling	Left in Well	Cement Fill up
30"	490'	490'	59bbls
24"	500'	500'	157bbls
9 5/8"	500'	500'	49bbls
9 5/8"	500'	500'	
9 5/8"	500'	500'	
(A) 7"	970'	970'	25.4bbls
(B) 7"	1121'	1121'	29.9bbls
(C) 7"	995'	995'	26.4bbls

RECEIVED
Office of Oil & Gas
Office of Chief
SEP 20 2004
WV Department of
Environmental Protection

OPEN FLOW DATA

Producing formation Completion A (Non-producer)

Gas: Initial open flow N/A Mcf/d
Final open flow N/A Mcf/d

Oil: Pay zone depth (ft) _____
Initial open flow _____ Bbl/d
Final open flow _____ Bbl/d

Time of open flow between initial and final tests: _____ hours
Static rock pressure _____ psig (surface pressure) after _____ hours

Second Producing formation Completion B (Poca No.3)

Gas: Initial open flow _____ Mcf/d
Final open flow _____ Mcf/d

Oil: Pay zone depth 1183' (ft)
Initial open flow _____ Bbl/d
Final open flow _____ Bbl/d

Time of open flow between initial and final tests: _____ hours
Static rock pressure _____ psig (surface pressure) after _____ hours

Third Producing formation Completion C (Poca No.3)

Gas: Initial open flow _____ Mcf/d
Final open flow _____ Mcf/d

Oil: Pay zone depth 1180' (ft)
Initial open flow _____ Bbl/d
Final open flow _____ Bbl/d

Time of open flow between initial and final tests: _____ hours
Static rock pressure _____ psig (surface pressure) after _____ hours

Note: ON BACK OF THIS FORM, PUT THE FOLLOWING: 1) DETAILS OF PERFORATED INTERVALS, FRACTURING OR STIMULATING, PHYSICAL CHANGE, ETC. 2) THE WELL LOG WHICH IS A SYSTEMATICK DETAILED GEOLOGICAL RECORD OF ALL FORMATIONS, INCLUDING COAL ENCOUNTERED BY THE WELLBORE.

Charles T. Akers
For: CDX Gas, LLC
By: Charles T. Akers
Date: 9/16/04

WYO
02373



Details of Perforated Intervals, Fracturing or Stimulation, Physical Change, Etc. – N/A

Well Log & Geologic Record - Depths from G.L.
B - Completion

Lithology	Depth in feet	
	Top	Bottom
Casing "Interference"	0	480
Mine Void (Sewell)	480	483
Casing "Interference"	483	520
Sandy Shale	520	570
Shale	570	574
Sandy Shale	574	612
Shale	612	617
Sandy Shale	617	670
Shale	670	683
Sandstone	683	703
Shale	703	706
Coal	706	708
Shale	708	741
Sandy Shale	741	860
Sandstone	860	864
Shale	864	873
Sandy Shale	873	878
Shale	878	894
Sandy Shale	894	899
Shale	899	963
Sandstone	963	1074
Shale	1074	1007
Sandy Shale	1077	1131
Sandstone	1131	1168
Shale	1168	1183
Coal	1183	1187
Shale	1187	1205
Sandy Shale	1205	1224
End		

— 560

C - Completion

Lithology	Depth in feet	
	Top	Bottom
Casing "Interference"	0	480
Mine Void (Sewell)	480	483
Casing "Interference"	483	520
Sandy Shale	520	570
Shale	570	574
Sandy Shale	574	612
Shale	612	620
Sandy Shale	620	700
Shale	700	707
Coal	707	709
Shale	709	725
Sandy Shale	725	869
Shale	869	880
Sandy Shale	880	893
Shale	916	930
Sandy Shale	930	970
Sandstone	970	1065
Sandy Shale	1065	1079
Shale	1079	1096
Sandy Shale	1096	1170
Shale	1170	1180
Coal	1180	1184
Shale	1184	1235
Sandy Shale	1235	1243
Sandy Shale	1243	1287
End		

WYD 2373